

## Anti-Bax Rabbit pAb



WL01637

For Research Use Only. Not For Use In Diagnostic Procedures

### Product Information

<b>Product name</b>	Anti-Bax Rabbit pAb	
<b>Source</b>	Rabbit	
<b>Species reactivity</b>	Human , Rat , Mouse, Rabbit	
<b>Tested applications</b>	Western blot	1:500-1:1000
	Immunohistochemistry	1:300
	Immunofluorescence	1:300-1:500

*\*Suggested working dilutions are given as a guide only. It is recommended that the user titrates the product for use in their own experiment using appropriate negative and positive controls.*

<b>Molecular Wt.</b>	23 kDa
<b>Pack size</b>	50/100/200/500/1000μl
<b>Storage</b>	Store at -20°C. <b>Avoid freeze/thaw cycles.</b>
<b>Storage buffer</b>	Supplied in 20 mM phosphate (pH 7.5), 150 mM NaCl, 100 μg/ml BSA, 50% glycerol and less than 0.02% sodium azide

### General Information

**Background**

The Bax encoded by this gene belongs to the BCL2 protein family. BCL2 family members form hetero- or homodimers and act as anti- or pro-apoptotic regulators that are involved in a wide variety of cellular activities. Bax forms a heterodimer with BCL2, and functions as an apoptotic activator. This protein is reported to interact with, and increase the opening of, the mitochondrial voltage-dependent anion channel (VDAC), which leads to the loss in membrane potential and the release of cytochrome c. The expression of this gene is regulated by the tumor suppressor P53 and has been shown to be involved in P53-mediated apoptosis.

**Immunogen**

Polyclonal antibody is produced by immunizing animals with a synthetic peptide of Bax.

**Purification**

Polyclonal antibody was purified by protein A affinity chromatography.

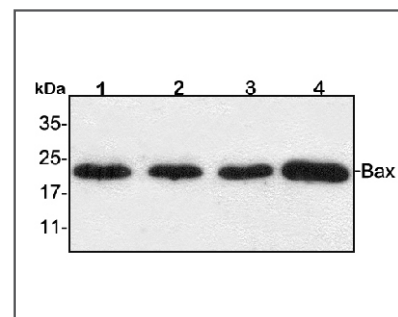
## Anti-Bax Rabbit pAb



WL01637

For Research Use Only. Not For Use In Diagnostic Procedures

### Product Images



#### Western blot-Anti-Bax pAb

**Lane 1:** Human HepG2 cell lysate 24μg  
**Lane 2:** Human Hela cell lysate 24μg  
**Lane 3:** Human BGC-823 cell lysate 24μg  
**Lane 4:** Human MGC-803 cell lysate 24μg

**Separation gel:** 15% polyacrylamide

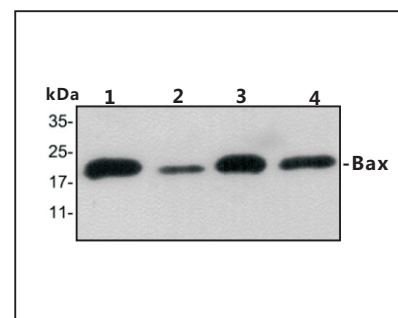
**Electrophoresis:** 100V, 4°C, 3h

**Transmembrane:** 100V, 4°C, 1h

**Blocking:** 5% w/v nonfat dry milk, 1×TBST, at RT with gentle shaking

**Primary antibody:** 1:1000 in blocking buffer, 4°C, overnight

**Visualization:** ECL, 30s-2min



#### Western blot-Anti-Bax pAb

**Lane 1:** Mouse kidney lysate 24μg  
**Lane 2:** Mouse heart lysate 24μg  
**Lane 3:** Rat liver lysate 24μg  
**Lane 4:** Rat brain lysate 24μg

**Separation gel:** 15% polyacrylamide

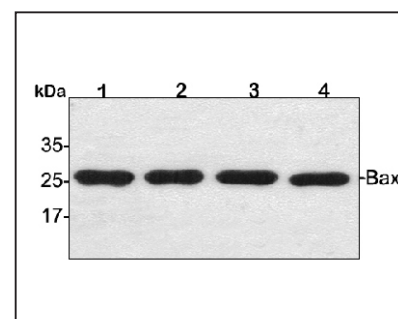
**Electrophoresis:** 100V, 4°C, 3h

**Transmembrane:** 100V, 4°C, 1h

**Blocking:** 5% w/v nonfat dry milk, 1×TBST, at RT with gentle shaking

**Primary antibody:** 1:1000 in blocking buffer, 4°C, overnight

**Visualization:** ECL, 30s-2min



#### Western blot-Anti-Bax pAb

**Lane 1:** Rabbit heart lysate 24μg  
**Lane 2:** Rabbit kidney lysate 24μg  
**Lane 3:** Rabbit liver lysate 24μg  
**Lane 4:** Rabbit stomach lysate 24μg

**Separation gel:** 15% polyacrylamide

**Electrophoresis:** 100V, 4°C, 3h

**Transmembrane:** 100V, 4°C, 1h

**Blocking:** 5% w/v nonfat dry milk, 1×TBST, at RT with gentle shaking

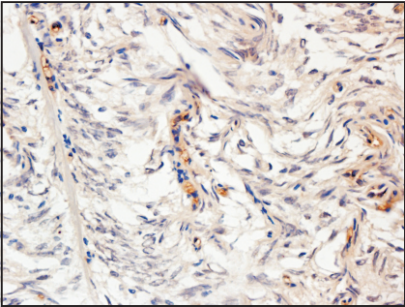
**Primary antibody:** 1:500 in blocking buffer, 4°C, overnight

**Visualization:** ECL, 30s-2min

Anti-Bax Rabbit pAb

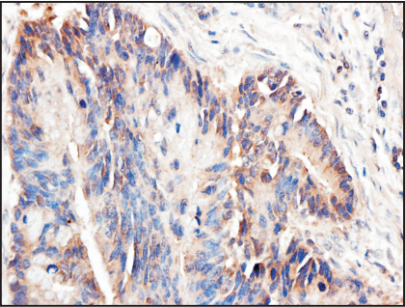
For Research Use Only. Not For Use In Diagnostic Procedures

Product Information



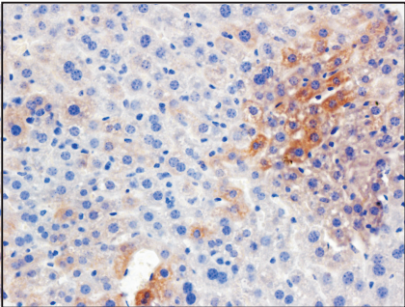
Immunohistochemistry-Anti-Bax pAb

**Sample:** Human brain tissue  
**Antigen retrieval:** pH 9.0 Tris-EDTA buffer  
**Primary antibody:** 1:250, 4°C, overnight  
**Secondary antibody-Biotin:** 1:150, 37°C, 1h  
**Streptavidin-HRP:** 1:200, 37°C, 30min  
**Color Developing:** DAB



Immunohistochemistry-Anti-Bax pAb

**Sample:** Human colon cancer tissue  
**Antigen retrieval:** pH 9.0 Tris-EDTA buffer  
**Primary antibody:** 1:500, 4°C, overnight  
**Secondary antibody-Biotin:** 1:150, 37°C, 1h  
**Streptavidin-HRP:** 1:200, 37°C, 30min  
**Color Developing:** DAB



Immunohistochemistry-Anti-Bax pAb

**Sample:** Mouse liver tissue  
**Antigen retrieval:** pH 9.0 Tris-EDTA buffer  
**Primary antibody:** 1:250, 4°C, overnight  
**Secondary antibody-Biotin:** 1:150, 37°C, 1h  
**Streptavidin-HRP:** 1:200, 37°C, 30min  
**Color Developing:** DAB

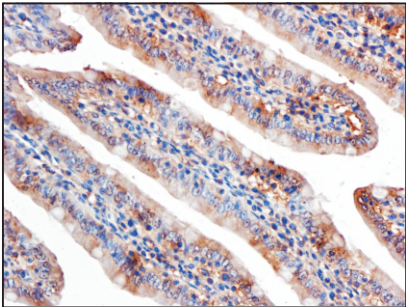


WL01637

Anti-Bax Rabbit pAb

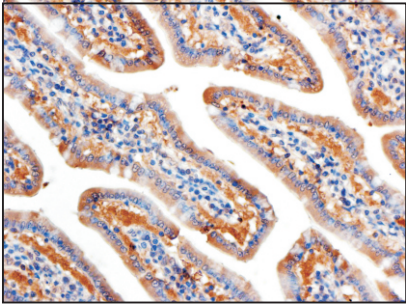
For Research Use Only. Not For Use In Diagnostic Procedures

Product Images



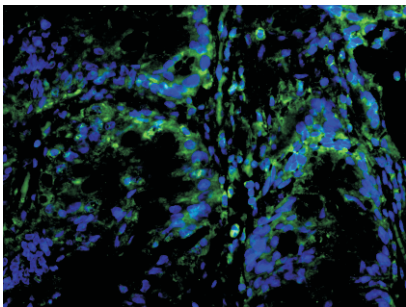
Immunohistochemistry-Anti-Bax pAb

**Sample:** Rat colon tissue  
**Antigen retrieval:** pH 9.0 Tris-EDTA buffer  
**Primary antibody:** 1:300, 4°C, overnight  
**Secondary antibody-Biotin:** 1:150, 37°C, 1h  
**Streptavidin-HRP:** 1:200, 37°C, 30min  
**Color Developing:** DAB



Immunohistochemistry-Anti-Bax pAb

**Sample:** Rat colon tissue  
**Antigen retrieval:** pH 9.0 Tris-EDTA buffer  
**Primary antibody:** 1:300, 4°C, overnight  
**Secondary antibody-Biotin:** 1:150, 37°C, 1h  
**Streptavidin-HRP:** 1:200, 37°C, 30min  
**Color Developing:** DAB



Immunofluorescence-Anti-Bax pAb

**Sample:** Human colon cancer tissue  
**Primary antibody:** 1:500, 4°C, overnight  
**Secondary antibody-FITC:** 1:200, at room temperature, 1h



WL01637

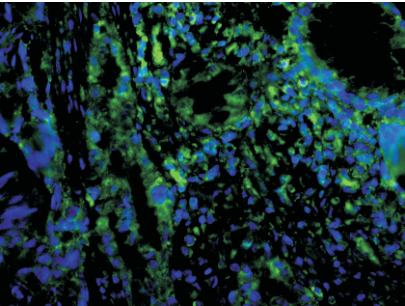
Anti-Bax Rabbit pAb



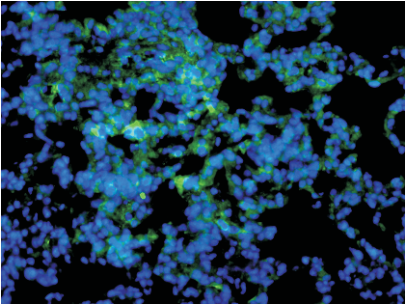
WL01637

For Research Use Only. Not For Use In Diagnostic Procedures

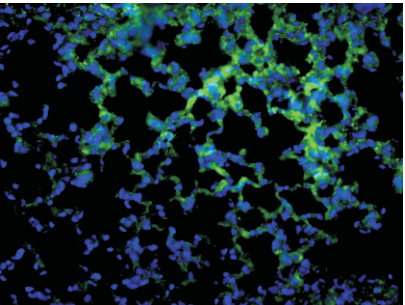
Product Information



**Immunofluorescence-Anti-Bax pAb**  
**Sample:** Human colon cancer tissue  
**Primary antibody:** 1:500, 4°C, overnight  
**Secondary antibody-FITC:** 1:200, at room temperature, 1h



**Immunofluorescence-Anti-Bax pAb**  
**Sample:** Mouse lung tissue  
**Primary antibody:** 1:300, 4°C, overnight  
**Secondary antibody-FITC:** 1:200, at room temperature, 1h



**Immunofluorescence-Anti-Bax pAb**  
**Sample:** Mouse lung tissue  
**Primary antibody:** 1:300, 4°C, overnight  
**Secondary antibody-FITC:** 1:200, at room temperature, 1h

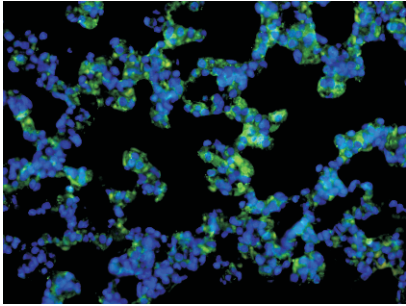
Anti-Bax Rabbit pAb



WL01637

For Research Use Only. Not For Use In Diagnostic Procedures

Product Images



**Immunofluorescence-Anti-Bax pAb**  
**Sample:** Rat lung tissue  
**Primary antibody:** 1:500, 4°C, overnight  
**Secondary antibody-FITC:** 1:200, at room temperature, 1h