

## Anti-Actin Rabbit pAb



WL0002d

For Research Use Only. Not For Use In Diagnostic Procedures

## Product Information

<b>Product name</b>	Anti-Actin Rabbit pAb	
<b>Source</b>	Rabbit	
<b>Species reactivity</b>	Human, Mouse, Rat	
<b>Tested applications</b>	Western blot	1:500-1:2000
	Immunohistochemistry	1:500
	Immunofluorescence	1:300

*\*Suggested working dilutions are given as a guide only. It is recommended that the user titrates the product for use in their own experiment using appropriate negative and positive controls.*

<b>Molecular Wt.</b>	43 kDa
<b>Pack size</b>	50/100/200/500/1000 $\mu$ l
<b>Storage</b>	Store at -20°C. <b>Avoid freeze/thaw cycles.</b>
<b>Storage buffer</b>	Supplied in 20 mM phosphate (pH 7.5), 150 mM NaCl, 100 $\mu$ g/ml BSA, 50% glycerol and less than 0.02% sodium azide

## General Information

**Background** Actin belongs to the actin family of proteins, which are highly conserved proteins that play a role in cell motility, structure and integrity. Alpha, beta and gamma actin isoforms have been identified, with alpha actins being a major constituent of the contractile apparatus, while beta and gamma actins are involved in the regulation of cell motility. All eukaryotic cells express Actin, which often constitutes as much as 50% of total cellular protein. Actin filaments can form both stable and labile structures and are crucial components of microvilli and the contractile apparatus of muscle cells.

**Immunogen** Polyclonal antibody is produced by immunizing animals with a synthetic peptide of Actin.

**Purification** Polyclonal antibody was purified by protein A affinity chromatography.

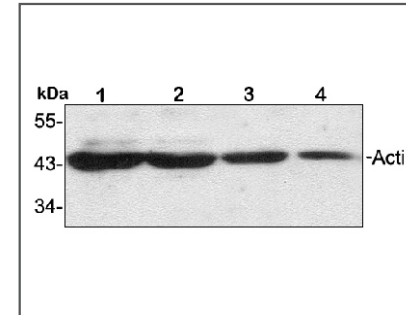
## Anti-Actin Rabbit pAb



WL0002d

For Research Use Only. Not For Use In Diagnostic Procedures

## Product Images



## Western blot-Anti-Actin pAb

**Lane 1:** Human HepG2 cell lysate 20 $\mu$ g  
**Lane 2:** Human HeLa cell lysate 20 $\mu$ g  
**Lane 3:** Human BGC-823 cell lysate 20 $\mu$ g  
**Lane 4:** Human MGC-803 cell lysate 20 $\mu$ g

**Separation gel:** 11% polyacrylamide

**Electrophoresis:** 100V, 4°C, 3h

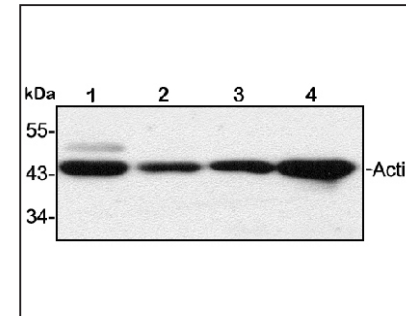
**Transmembrane:** 100V, 4°C, 1h

**Blocking:** 5% w/v nonfat dry milk, 1 $\times$ TBST, at RT with gentle shaking

**Primary antibody:** 1:1500 in blocking buffer, 4°C, overnight

**Secondary antibody-HRP:** 1:7000 in blocking buffer, RT, 45min

**Visualization:** ECL



## Western blot-Anti-Actin pAb

**Lane 1:** Mouse heart tissue lysate 15 $\mu$ g

**Lane 2:** Mouse lung tissue lysate 15 $\mu$ g

**Lane 3:** Mouse skin tissue lysate 15 $\mu$ g

**Lane 4:** Mouse colon tissue lysate 15 $\mu$ g

**Separation gel:** 11% polyacrylamide

**Electrophoresis:** 100V, 4°C, 3h

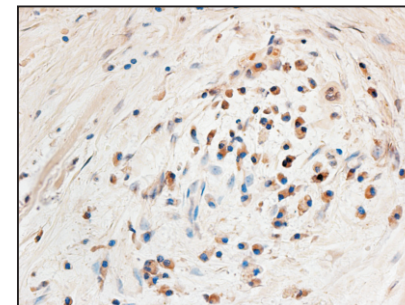
**Transmembrane:** 100V, 4°C, 1h

**Blocking:** 5% w/v nonfat dry milk, 1 $\times$ TBST, at RT with gentle shaking

**Primary antibody:** 1:1500 in blocking buffer, 4°C, overnight

**Secondary antibody-HRP:** 1:7000 in blocking buffer, RT, 45min

**Visualization:** ECL



## Immunohistochemistry-Anti-Actin pAb

**Sample:** Human colon cancer tissue

**Antigen retrieval:** pH 9.0 Tris-EDTA buffer

**Primary antibody:** 1:500, 4°C, overnight

**Secondary antibody-Biotin:** 1:150, 37°C, 1h

**Streptavidin-HRP:** 1:200, 37°C, 30min

**Color Developing:** DAB

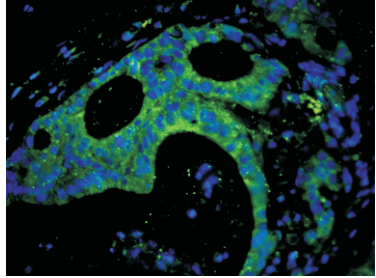


## Anti-Actin Rabbit pAb

WL0002d

For Research Use Only. Not For Use In Diagnostic Procedures

### Product Information



#### Immunofluorescence-Anti-Actin pAb

**Sample:** Human colon cancer tissue

**Primary antibody:** 1:300, 4°C, overnight

**Secondary antibody-FITC:** 1:200, at room temperature, 1h