

## Anti-Collagen I Rabbit pAb



WL0088

For Research Use Only. Not For Use In Diagnostic Procedures

## Product Information

<b>Product name</b>	Anti-Collagen I Rabbit pAb
<b>Source</b>	Rabbit
<b>Species reactivity</b>	Human, Mouse, Rat, Rabbit
<b>Tested applications</b>	Western blot 1:500-1:1000
	<i>*Suggested working dilutions are given as a guide only. It is recommended that the user titrates the product for use in their own experiment using appropriate negative and positive controls.</i>
<b>Molecular Wt.</b>	130 kDa
<b>Pack size</b>	50/100/200/500/1000µl
<b>Storage</b>	Store at -20°C. <b>Avoid freeze/thaw cycles.</b>
<b>Storage buffer</b>	Supplied in 20 mM phosphate (pH 7.5), 150 mM NaCl, 100 µg/ml BSA, 50% glycerol and less than 0.02% sodium azide

## General Information

<b>Background</b>	Type I collagen is a member of group I collagen found in most connective tissues such as skin, bone and tendon. Collagen type I is produced from procollagen when two teloterminal propeptides are digested from the precursor and released into the circulation. Type I collagen is a heterotrimer that consists of two alpha 1 chains and one alpha 2 chain. Mutations in the COL1A1 gene encoding the alpha 1 chain are associated with osteogenesis imperfecta types I-IV, Ehlers-Danlos syndrome type VIIA, Ehlers-Danlos syndrome Classical type, Caffey Disease and idiopathic osteoporosis. Mutations in the COL1A2 gene encoding the alpha 2 chain are associated with osteogenesis imperfecta types I-IV, Ehlers-Danlos syndrome type VIIB, recessive Ehlers-Danlos syndrome Classical type, idiopathic osteoporosis, and atypical Marfan syndrome.
<b>Immunogen</b>	Polyclonal antibody is produced by immunizing animals with a synthetic peptide of Collagen I.
<b>Purification</b>	Polyclonal antibody was purified by immunogen affinity chromatography.

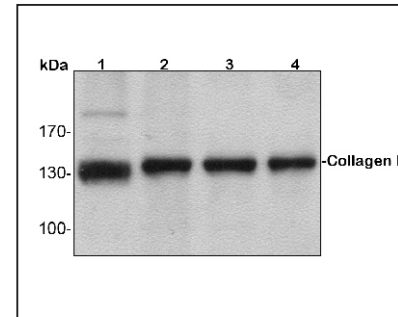
## Anti-Collagen I Rabbit pAb



WL0088

For Research Use Only. Not For Use In Diagnostic Procedures

## Product Images



## Western blot-Anti-Collagen I pAb

Lane 1: Rat testicle tissue lysate 15µg

Lane 2: Rat brain tissue lysate 15µg

Lane 3: Rat cerebellum tissue lysate 15µg

Lane 4: Rat spinal cord tissue lysate 15µg

Separation gel: 8% polyacrylamide

Electrophoresis: 100V, 4°C, 3h

Transmembrane: 100V, 4°C, 1h

Blocking: 5% w/v nonfat dry milk, 1×TBST, at RT with gentle shaking

Primary antibody: 1:1000 in blocking buffer, 4°C, overnight

Secondary antibody-HRP: 1:7000 in blocking buffer, RT, 45min

Visualization: ECL