

## Anti-IL6 Rabbit pAb



WL02841

For Research Use Only. Not For Use In Diagnostic Procedures

### Product Information

<b>Product name</b>	Anti-IL6 Rabbit pAb	
<b>Source</b>	Rabbit	
<b>Species reactivity</b>	Human, Mouse, Rat	
<b>Tested applications</b>	Western blot	1:1000-1:1500
	Immunohistochemistry	1:100-1:400
	<i>*Suggested working dilutions are given as a guide only. It is recommended that the user titrates the product for use in their own experiment using appropriate negative and positive controls.</i>	
<b>Molecular Wt.</b>	21 kDa	
<b>Pack size</b>	50/100/200/500/1000µl	
<b>Storage</b>	Store at -20°C. <b>Avoid freeze/thaw cycles.</b>	
<b>Storage buffer</b>	Supplied in 20 mM phosphate (pH 7.5), 150 mM NaCl, 100 µg/ml BSA, 50% glycerol and less than 0.02% sodium azide	

### General Information

**Background** IL6 (Interleukin-6) is a multifunctional protein, that plays critical roles in host defense, immune response and hematopoiesis. IL6 is constitutively expressed by epidermal Langerhans cells and its expression is induced in stimulated keratinocytes. IL6 induces proliferation or differentiation in many cell types including B cells, thymocytes and T cells. IL6, in concert with TGF-β, is important for developing Th17 responses. IL6 binds to IL6Rα and through this association induces gp130 homodimerization. Research studies have shown that IL6, through increasing expression of proangiogenic VEGF, may also contribute to metastatic breast cancer.

**Immunogen** Polyclonal antibody is produced by immunizing animals with a synthetic peptide of IL6.

**Purification** Polyclonal antibody was purified by Protein A affinity chromatography.

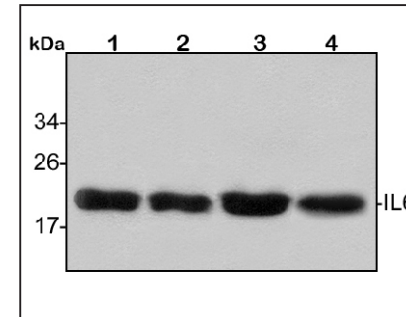
## Anti-IL6 Rabbit pAb



WL02841

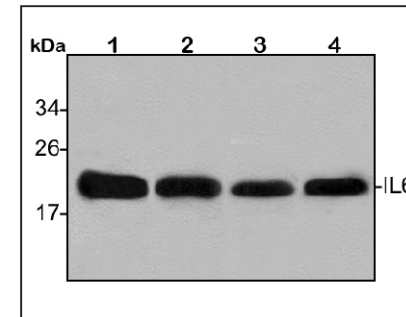
For Research Use Only. Not For Use In Diagnostic Procedures

### Product Images



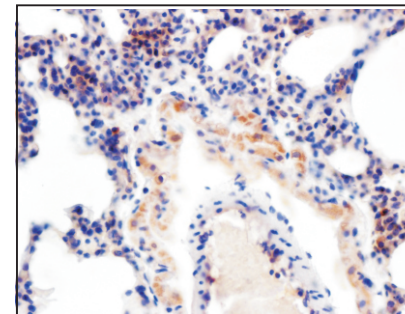
#### Western blot-Anti-IL6 pAb

**Lane 1:** Human HepG2 cell lysate 30µg  
**Lane 2:** Human HeLa cell lysate 30µg  
**Lane 3:** Human BGC-823 cell lysate 30µg  
**Lane 4:** Human MGC-803 cell lysate 30µg  
**Separation gel:** 15% polyacrylamide  
**Electrophoresis:** 100V, 4°C, 3h  
**Transmembrane:** 100V, 4°C, 1h  
**Blocking:** 5% w/v nonfat dry milk, 1×TBST, at RT with gentle shaking  
**Primary antibody:** 1:1500 in blocking buffer, 4°C, overnight  
**Secondary antibody (WLA023a):** 1:5000-1:10000, 45min  
**Detection:** ECL, 30s-2min



#### Western blot-Anti-IL6 pAb

**Lane 1:** Mouse kidney tissue lysate 30µg  
**Lane 2:** Mouse brain tissue lysate 30µg  
**Lane 3:** Rat spleen tissue lysate 30µg  
**Lane 4:** Rat stomach tissue lysate 30µg  
**Separation gel:** 15% polyacrylamide  
**Electrophoresis:** 100V, 4°C, 3h  
**Transmembrane:** 100V, 4°C, 1h  
**Blocking:** 5% w/v nonfat dry milk, 1×TBST, at RT with gentle shaking  
**Primary antibody:** 1:1500 in blocking buffer, 4°C, overnight  
**Secondary antibody (WLA023a):** 1:5000-1:10000, 45min  
**Visualization:** ECL, 30s-2min



#### Immunohistochemistry-Anti-IL6 pAb

**Sample:** Rat lung tissue  
**Antigen retrieval:** pH 9.0 Tris-EDTA buffer  
**Primary antibody:** 1:150, 4°C, overnight  
**Secondary antibody-Biotin:** 1:150, 37°C, 1h  
**Streptavidin-HRP:** 1:200, 37°C, 30min  
**Color Developing:** DAB

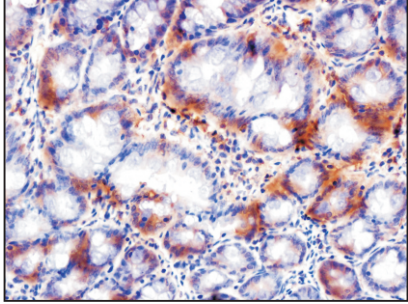
## Anti-IL6 Rabbit pAb



WL02841

For Research Use Only. Not For Use In Diagnostic Procedures

### Product Images



#### Immunohistochemistry-Anti-IL6 pAb

**Sample:** Mouse colon tissue

**Antigen retrieval:** pH 9.0 Tris-EDTA buffer

**Primary antibody:** 1:300, 4°C, overnight

**Secondary antibody-Biotin:** 1:150, 37°C, 1h

**Streptavidin-HRP:** 1:200, 37°C, 30min

**Color Developing:** DAB