

Anti-IRF3 Rabbit pAb



WL02431

For Research Use Only. Not For Use In Diagnostic Procedures

Product Information

Product name	Anti-IRF3 Rabbit pAb
Source	Rabbit
Species reactivity	Human
Tested applications	Western blot 1:1000-1:1500 <small><i>*Suggested working dilutions are given as a guide only. It is recommended that the user titrates the product for use in their own experiment using appropriate negative and positive controls.</i></small>
Molecular Wt.	47 kDa
Pack size	50/100/200/500/1000μl
Storage	Store at -20°C. Avoid freeze/thaw cycles.
Storage buffer	Supplied in 20 mM phosphate (pH 7.5), 150 mM NaCl, 100 μg/ml BSA, 50% glycerol and less than 0.02% sodium azide

General Information

Background	IRF3 is a member of the interferon regulatory transcription factor (IRF) family. IRF3 has been further characterized and shown to contain several functional domains including a nuclear export signal, a DNA-binding domain, a C-terminal IRF association domain and several regulatory phosphorylation sites. IRF3 is found in an inactive cytoplasmic form that upon serine/threonine phosphorylation forms a complex with CREBBP. IRF3 can inhibit cell growth and plays a critical role in controlling the expression of genes in the innate immune response. Aggregated MAVS have been found to activate IRF3 dimerization.
Immunogen	Polyclonal antibody is produced by immunizing animals with a synthetic peptide of IRF3.
Purification	Polyclonal antibody was purified by Protein A affinity chromatography.

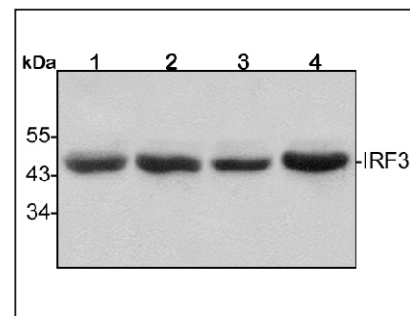
Anti-IRF3 Rabbit pAb



WL02431

For Research Use Only. Not For Use In Diagnostic Procedures

Product Images



Western blot-Anti-IRF3 pAb

Lane 1: Human HepG2 cell lysate 30μg

Lane 2: Human Hela cell lysate 30μg

Lane 3: Human MGC-803 cell lysate 30μg

Lane 4: Human SGC-7901 cell lysate 30μg

Separation gel: 10% polyacrylamide

Electrophoresis: 100V, 4°C, 3h

Transmembrane: 100V, 4°C, 1h

Blocking: 5% w/v nonfat dry milk, 1×TBST, at RT with gentle shaking

Primary antibody: 1:1500 in blocking buffer, 4°C, overnight

Secondary antibody (WLA023a) : 1:5000-1:10000, 45min

Detection: ECL, 30s-2min