

Anti-P-FOXO1(s319) Rabbit pAb



WLH3956

For Research Use Only. Not For Use In Diagnostic Procedures

Product Information

Product name	Anti-P-FOXO1(s319) Rabbit pAb	
Source	Rabbit	
Species reactivity	Human, Mouse, Rat	
Tested applications	Immunohistochemistry	1:100-1:400
	Immunofluorescence	1:100-1:400
<i>*Suggested working dilutions are given as a guide only. It is recommended that the user titrates the product for use in their own experiment using appropriate negative and positive controls.</i>		
Pack size	50/100/200/500/1000μl	
Storage	Store at -20°C. Avoid freeze/thaw cycles.	
Storage buffer	Supplied in 20 mM phosphate (pH 7.5), 150 mM NaCl, 100 μg/ml	
	BSA, 50% glycerol and less than 0.02% sodium azide	

General Information

Background	FOXO1A belongs to the forkhead family of transcription factors which are characterized by a distinct forkhead domain. FKHR (for forkhead in rhabdomyosarcoma) and FKHL1 are members of the forkhead family of transcription factors. Transcriptional activation of FKHR proteins is regulated by the serine/threonine kinase Akt1, which phosphorylates FKHL1 and results in FKHL1 associating with 14-3-3 proteins and being retained in the cytoplasm. FKHL1, also designated forkhead box protein O1A (FOXO1), is a ubiquitously expressed protein that shuttles between the cytoplasm and nucleus.
Immunogen	Polyclonal antibody is produced by immunizing animals with a synthetic peptide of P-FOXO1(s319).
Purification	Polyclonal antibody was purified by proteinA affinity chromatography.

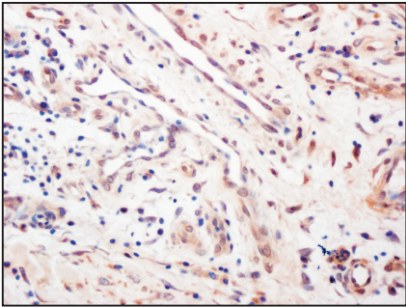
Anti-P-FOXO1(s319) Rabbit pAb



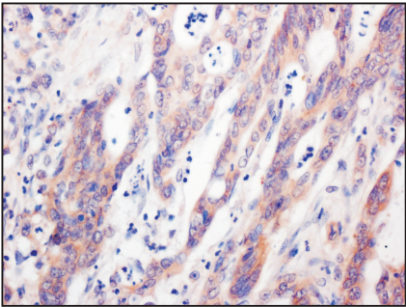
WLH3956

For Research Use Only. Not For Use In Diagnostic Procedures

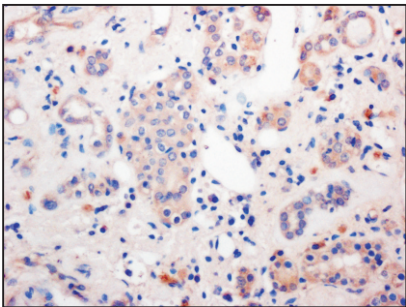
Product Images



Immunohistochemistry-Anti-P-FOXO1(S319) pAb
Sample: Human lung cancer tissue
Antigen retrieval: pH 9.0 Tris-EDTA buffer
Primary antibody: 1:300, 4°C, overnight
Secondary antibody-Biotin: 1:150, 37°C, 1h
Streptavidin-HRP: 1:200, 37°C, 30min
Visualization: DAB



Immunohistochemistry-Anti-P-FOXO1(S319) pAb
Sample: Human colon cancer tissue
Antigen retrieval: pH 9.0 Tris-EDTA buffer
Primary antibody: 1:300, 4°C, overnight
Secondary antibody-Biotin: 1:150, 37°C, 1h
Streptavidin-HRP: 1:200, 37°C, 30min
Visualization: DAB



Immunohistochemistry-Anti-P-FOXO1(S319) pAb
Sample: Human thyroid cancer tissue
Antigen retrieval: pH 9.0 Tris-EDTA buffer
Primary antibody: 1:300, 4°C, overnight
Secondary antibody-Biotin: 1:150, 37°C, 1h
Streptavidin-HRP: 1:200, 37°C, 30min
Visualization: DAB

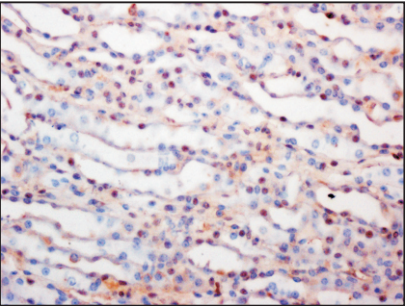
Anti-P-FOXO1(s319) Rabbit pAb



WLH3956

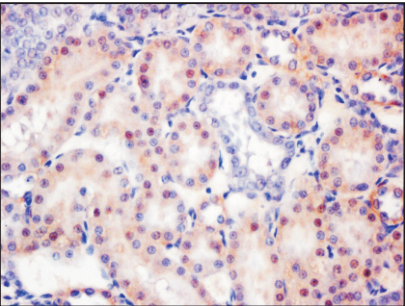
For Research Use Only. Not For Use In Diagnostic Procedures

Product Information



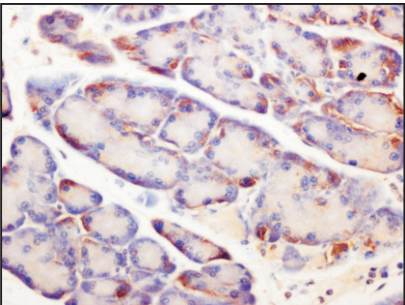
Immunohistochemistry-Anti-P-FOXO1(S319) pAb

Sample: Mouse kidney tissue
Antigen retrieval: pH 9.0 Tris-EDTA buffer
Primary antibody: 1:300, 4°C, overnight
Secondary antibody-Biotin: 1:150, 37°C, 1h
Streptavidin-HRP: 1:200, 37°C, 30min
Visualization: DAB



Immunohistochemistry-Anti-P-FOXO1(S319) pAb

Sample: Rat kidney tissue
Antigen retrieval: pH 9.0 Tris-EDTA buffer
Primary antibody: 1:300, 4°C, overnight
Secondary antibody-Biotin: 1:150, 37°C, 1h
Streptavidin-HRP: 1:200, 37°C, 30min
Visualization: DAB



Immunohistochemistry-Anti-P-FOXO1(S319) pAb

Sample: Rat pancreas tissue
Antigen retrieval: pH 9.0 Tris-EDTA buffer
Primary antibody: 1:300, 4°C, overnight
Secondary antibody-Biotin: 1:150, 37°C, 1h
Streptavidin-HRP: 1:200, 37°C, 30min
Visualization: DAB

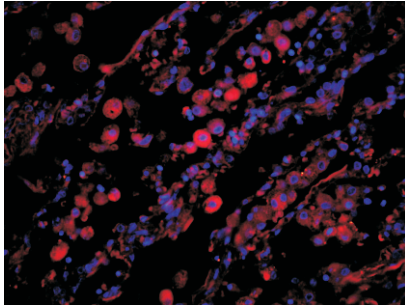
Anti-P-FOXO1(s319) Rabbit pAb



WLH3956

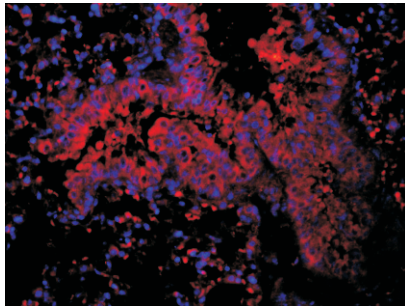
For Research Use Only. Not For Use In Diagnostic Procedures

Product Images



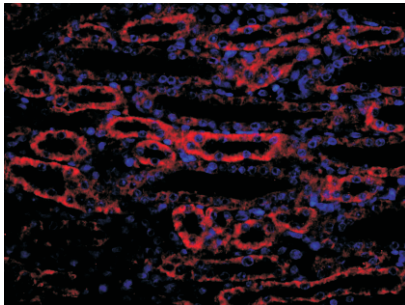
Immunofluorescence-Anti-P-FOXO1(S319) pAb

Sample: Human lung cancer tissue
Primary antibody: 1:200, 4°C, overnight
Secondary antibody-CY3: 1:200, at room temperature, 1h



Immunofluorescence-Anti-P-FOXO1(S319) pAb

Sample: Mouse lung tissue
Primary antibody: 1:200, 4°C, overnight
Secondary antibody-CY3: 1:200, at room temperature, 1h



Immunofluorescence-Anti-P-FOXO1(S319) pAb

Sample: Rat kidney tissue
Primary antibody: 1:200, 4°C, overnight
Secondary antibody-CY3: 1:200, at room temperature, 1h