

Anti-p-MKK7(Ser271/Thr275)Rabbit pAb



WL03553

For Research Use Only. Not For Use In Diagnostic Procedures

Product Information

Product name	Anti-P-MKK7(Ser271/Thr275) Rabbit pAb	
Source	Rabbit	
Species reactivity	Human, Mouse, Rat	
Tested applications	Western blot	1:500
	Immunohistochemistry	1:100-1:400
	Immunofluorescence	1:100-1:400

**Suggested working dilutions are given as a guide only. It is recommended that the user titrates the product for use in their own experiment using appropriate negative and positive controls.*

Molecular Wt.	47 kDa
Pack size	50/100/200/500/1000µl
Storage	Store at -20°C. Avoid freeze/thaw cycles.
Storage buffer	Supplied in 20 mM phosphate (pH 7.5), 150 mM NaCl, 100 µg/ml BSA, 50% glycerol and less than 0.02% sodium azide

General Information

Background MKK7 is a MAP kinase kinase that serves as a specific activator of the SAPK/JNK pathway. This kinase is involved in the signal transduction mediating the cell responses to proinflammatory cytokines, and environmental stresses. Alternative splicing results in multiple transcript variants. Sequence alignment of the activation loop of the MAP kinase family members indicates that Ser271 and Thr275 are potential phosphorylation sites that are crucial for the kinase activity.

Immunogen Polyclonal antibody is produced by immunizing animals with a synthetic peptide of P-MKK7(Ser271/Thr275).

Purification Polyclonal antibody was purified by Protein A affinity chromatography.

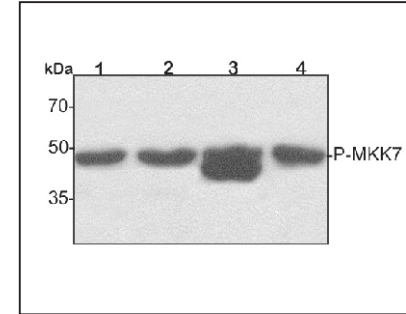
Anti-P-MKK7(Ser271/Thr275)Rabbit pAb



WL03553

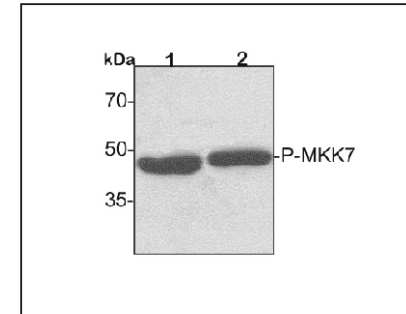
For Research Use Only. Not For Use In Diagnostic Procedures

Product Images



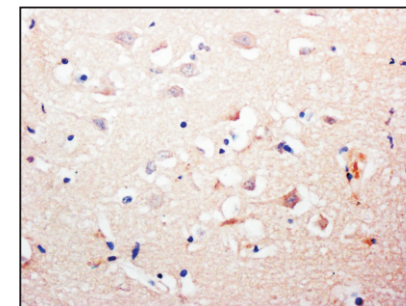
Western blot-Anti-P-MKK7(Ser271/Thr275) pAb

Lane 1: Human BGC-823 cell lysate 30µg
Lane 2: Human MGC-803 cell lysate 30µg
Lane 3: Human SGC-7901 cell lysate 30µg
Lane 4: Human MCF-7 cell lysate 30µg
Separation gel: 10% polyacrylamide
Electrophoresis: 100V, 4°C, 3h
Transmembrane: 100V, 4°C, 1h
Blocking: 5% w/v nonfat dry milk, 1×TBST, at RT with gentle shaking
Primary antibody: 1:500 in blocking buffer, 4°C, overnight
Secondary antibody (WLA023a) : 1:5000-1:10000, 45min
Detection: ECL, 30s-2min



Western blot-Anti-P-MKK7(Ser271/Thr275) pAb

Lane 1: Mouse kidney tissue lysate 30µg
Lane 2: Rat liver tissue lysate 30µg
Separation gel: 10% polyacrylamide
Electrophoresis: 100V, 4°C, 3h
Transmembrane: 100V, 4°C, 1h
Blocking: 5% w/v nonfat dry milk, 1×TBST, at RT with gentle shaking
Primary antibody: 1:500 in blocking buffer, 4°C, overnight
Secondary antibody (WLA023a) : 1:5000-1:10000, 45min
Detection: ECL, 30s-2min



Immunohistochemistry-Anti-MyD88 pAb

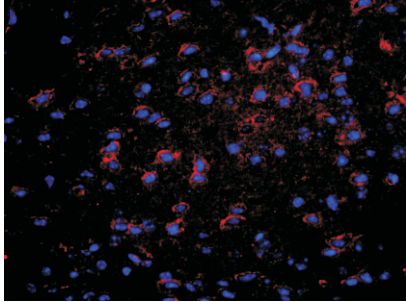
Sample: Rat brain tissue
Antigen retrieval: pH 9.0 Tris-EDTA buffer
Primary antibody: 1:150, 4°C, overnight
Secondary antibody-Biotin: 1:150, 37°C, 1h
Streptavidin-HRP: 1:200, 37°C, 30min
Color Developing: DAB

Anti-p-MKK7(Ser271/Thr275)Rabbit pAb  

WL03553

For Research Use Only. Not For Use In Diagnostic Procedures

Product Information



Immunofluorescence-Anti-P-MKK7(Ser271/Thr275) pAb

Sample: Mouse brain tissue

Primary antibody: 1:200, 4°C, overnight

Secondary antibody-CY3: 1:200, at room temperature, 1h