

## Anti-NM23A Rabbit pAb



WLH4400

For Research Use Only. Not For Use In Diagnostic Procedures

### Product Information

<b>Product name</b>	Anti-NM23A Rabbit pAb		
<b>Source</b>	Rabbit		
<b>Species reactivity</b>	Mouse, Rat, Rabbit		
<b>Tested applications</b>	Immunohistochemistry	1:100-1:400	
	Immunofluorescence	1:100-1:400	
<i>*Suggested working dilutions are given as a guide only. It is recommended that the user titrates the product for use in their own experiment using appropriate negative and positive controls.</i>			
<b>Pack size</b>	50/100/200/500/1000μl		
<b>Storage</b>	Store at -20°C. <b>Avoid freeze/thaw cycles.</b>		
<b>Storage buffer</b>	Supplied in 20 mM phosphate (pH 7.5), 150 mM NaCl, 100 μg/ml BSA, 50% glycerol and less than 0.02% sodium azide		

### General Information

<b>Background</b>	NME1 is also named as NDPKA(Nucleoside diphosphate kinase A), NM23(Metastasis inhibition factor nm23), GAAD(Granzyme A-activated DNase) and belongs to the NDK family. It is a major role in the synthesis of nucleoside triphosphates other than ATP and required for neural development including neural patterning and cell fate determination.
<b>Immunogen</b>	Polyclonal antibody is produced by immunizing animals with a synthetic peptide of NM23A.
<b>Purification</b>	Polyclonal antibody was purified by immunoge affinity chromatography.

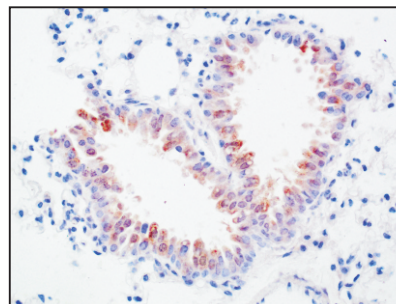
## Anti-NM23A Rabbit pAb



WLH4400

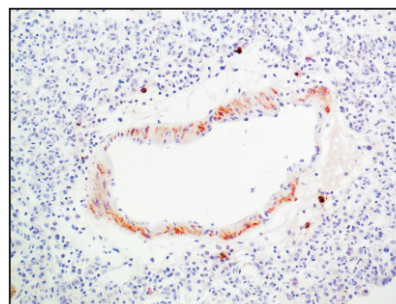
For Research Use Only. Not For Use In Diagnostic Procedures

### Product Images



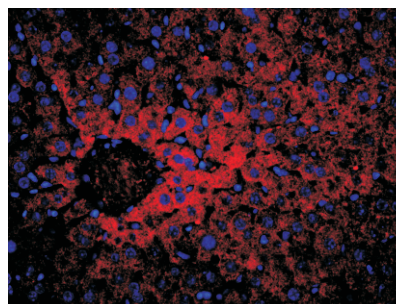
#### Immunohistochemistry-Anti-NM23A pAb

**Sample:** Mouse lung tissue  
**Antigen retrieval:** pH 9.0 Tris-EDTA buffer  
**Primary antibody:** 1:200, 4°C, overnight  
**Secondary antibody-Biotin:** 1:150, 37°C, 1h  
**Streptavidin-HRP:** 1:200, 37°C, 30min  
**Visualization:** DAB



#### Immunohistochemistry-Anti-NM23A pAb

**Sample:** Rat lung tissue  
**Antigen retrieval:** pH 9.0 Tris-EDTA buffer  
**Primary antibody:** 1:200, 4°C, overnight  
**Secondary antibody-Biotin:** 1:150, 37°C, 1h  
**Streptavidin-HRP:** 1:200, 37°C, 30min  
**Visualization:** DAB



#### Immunofluorescence-Anti-NM23A pAb

**Sample:** Mouse liver tissue  
**Primary antibody:** 1:200, 4°C, overnight  
**Secondary antibody-CY3:** 1:200, at room temperature, 1h

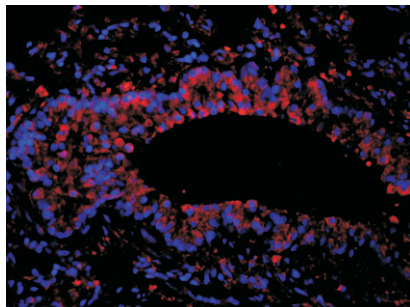
## Anti-NM23A Rabbit pAb



WLH4400

For Research Use Only. Not For Use In Diagnostic Procedures

### Product Information



#### Immunofluorescence-Anti-NM23A pAb

**Sample:** Rabbit lung tissue

**Primary antibody:** 1:200, 4°C, overnight

**Secondary antibody-CY3:** 1:200, at room temperature, 1h