

## Anti-PRSS8 Rabbit pAb



WLH4399

For Research Use Only. Not For Use In Diagnostic Procedures

## Product Information

<b>Product name</b>	Anti-EAAT3 Rabbit pAb		
<b>Source</b>	Rabbit		
<b>Species reactivity</b>	Human, Mouse, Rat, Rabbit		
<b>Tested applications</b>	Immunohistochemistry	1:100-1:400	
	Immunofluorescence	1:100-1:400	
<i>*Suggested working dilutions are given as a guide only. It is recommended that the user titrates the product for use in their own experiment using appropriate negative and positive controls.</i>			
<b>Pack size</b>	50/100/200/500/1000μl		
<b>Storage</b>	Store at -20°C. <b>Avoid freeze/thaw cycles.</b>		
<b>Storage buffer</b>	Supplied in 20 mM phosphate (pH 7.5), 150 mM NaCl, 100 μg/ml BSA, 50% glycerol and less than 0.02% sodium azide		

## General Information

<b>Background</b>	PRSS8 is a member of the peptidase S1 or chymotrypsin family of serine proteases. It is a heterodimer of two chains, light and heavy, which are held by a disulfide bond. This protease exhibits trypsin-like substrate specificity, cleaving protein substrates at the carboxyl terminus of lysine or arginine residues.
<b>Immunogen</b>	Polyclonal antibody is produced by immunizing animals with a synthetic peptide of PRSS8.
<b>Purification</b>	Polyclonal antibody was purified by immunoge affinity chromatography.

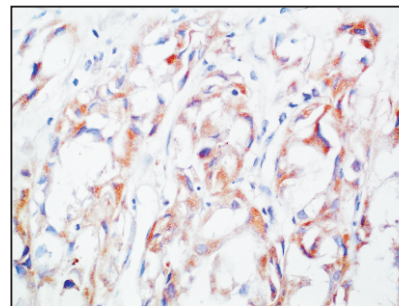
## Anti-PRSS8 Rabbit pAb



WLH4399

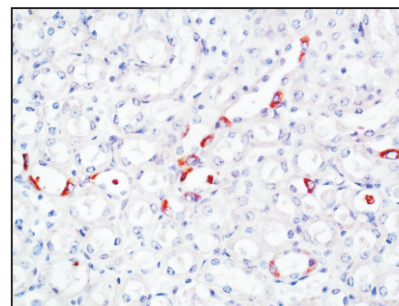
For Research Use Only. Not For Use In Diagnostic Procedures

## Product Images



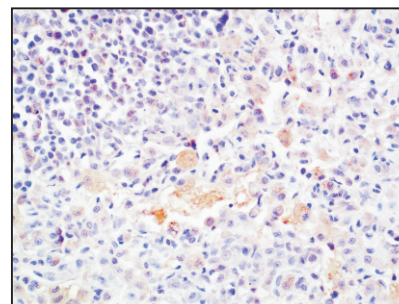
## Immunohistochemistry-Anti-PRSS8 pAb

**Sample:** Human kidney cancer tissue  
**Antigen retrieval:** pH 9.0 Tris-EDTA buffer  
**Primary antibody:** 1:200, 4°C, overnight  
**Secondary antibody-Biotin:** 1:150, 37°C, 1h  
**Streptavidin-HRP:** 1:200, 37°C, 30min  
**Visualization:** DAB



## Immunohistochemistry-Anti-PRSS8 pAb

**Sample:** Mouse kidney tissue  
**Antigen retrieval:** pH 9.0 Tris-EDTA buffer  
**Primary antibody:** 1:200, 4°C, overnight  
**Secondary antibody-Biotin:** 1:150, 37°C, 1h  
**Streptavidin-HRP:** 1:200, 37°C, 30min  
**Visualization:** DAB



## Immunohistochemistry-Anti-PRSS8 pAb

**Sample:** Rat lung tissue  
**Antigen retrieval:** pH 9.0 Tris-EDTA buffer  
**Primary antibody:** 1:200, 4°C, overnight  
**Secondary antibody-Biotin:** 1:150, 37°C, 1h  
**Streptavidin-HRP:** 1:200, 37°C, 30min  
**Visualization:** DAB

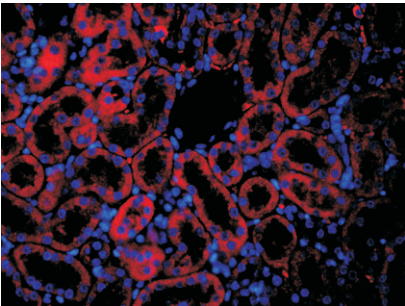
## Anti-PRSS8 Rabbit pAb



WLH4399

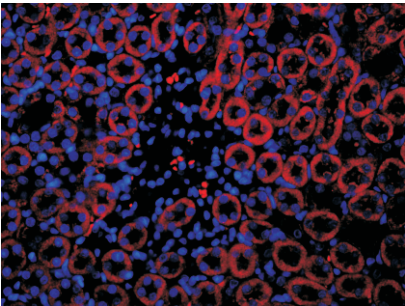
For Research Use Only. Not For Use In Diagnostic Procedures

### Product Information



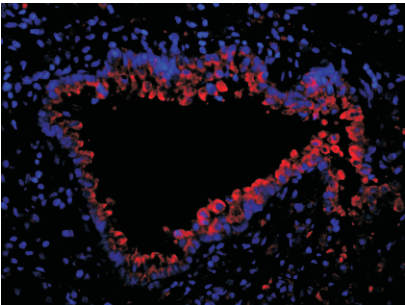
#### Immunofluorescence-Anti-PRSS8 pAb

**Sample:** Mouse kidney tissue  
**Primary antibody:** 1:200, 4°C, overnight  
**Secondary antibody-CY3:** 1:200, at room temperature, 1h



#### Immunofluorescence-Anti-PRSS8 pAb

**Sample:** Rat kidney tissue  
**Primary antibody:** 1:200, 4°C, overnight  
**Secondary antibody-CY3:** 1:200, at room temperature, 1h



#### Immunofluorescence-Anti-PRSS8 pAb

**Sample:** Rat lung tissue  
**Primary antibody:** 1:200, 4°C, overnight  
**Secondary antibody-CY3:** 1:200, at room temperature, 1h

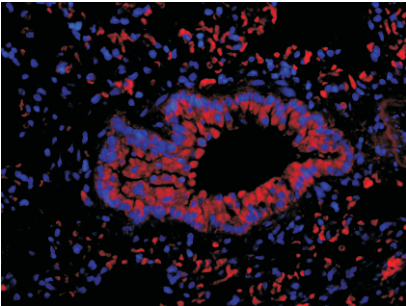
## Anti-PRSS8 Rabbit pAb



WLH4399

For Research Use Only. Not For Use In Diagnostic Procedures

### Product Images



#### Immunofluorescence-Anti-PRSS8 pAb

**Sample:** Rabbit lung tissue  
**Primary antibody:** 1:200, 4°C, overnight  
**Secondary antibody-CY3:** 1:200, at room temperature, 1h