

Anti-Wnt2 Rabbit pAb



WLH4717

For Research Use Only. Not For Use In Diagnostic Procedures

Product Information

Product name	Anti-Wnt2 Rabbit pAb		
Source	Rabbit		
Species reactivity	Human, Mouse, Rat		
Tested applications	Immunohistochemistry	1:100-1:400	
	Immunofluorescence	1:100-1:400	
<i>*Suggested working dilutions are given as a guide only. It is recommended that the user titrates the product for use in their own experiment using appropriate negative and positive controls.</i>			
Pack size	50/100/200/500/1000μl		
Storage	Store at -20°C. Avoid freeze/thaw cycles.		
Storage buffer	Supplied in 20 mM phosphate (pH 7.5), 150 mM NaCl, 100 μg/ml BSA, 50% glycerol and less than 0.02% sodium azide		

General Information

Background	Wnt2 is a secreted glycoprotein that is one of the canonical Wnt ligands. The WNT gene family consists of structurally related genes which encode secreted signaling proteins. These proteins have been implicated in oncogenesis and in several developmental processes, including regulation of cell fate and patterning during embryogenesis. Wnt2 is known to directly regulate β-catenin activity, the key player in proliferation and inflammation.
Immunogen	Polyclonal antibody is produced by immunizing animals with a synthetic peptide of Wnt2.
Purification	Polyclonal antibody was purified by immunogen affinity chromatography.

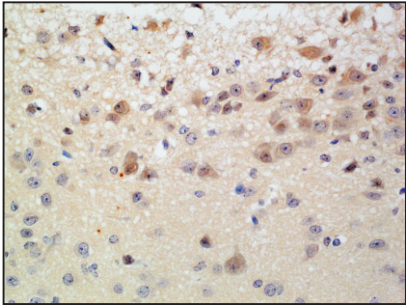
Anti-Wnt2 Rabbit pAb



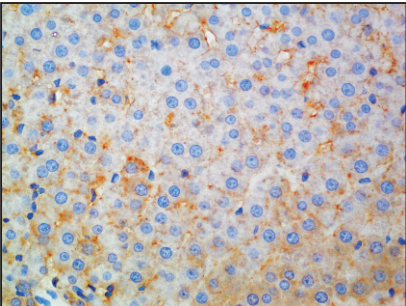
WLH4717

For Research Use Only. Not For Use In Diagnostic Procedures

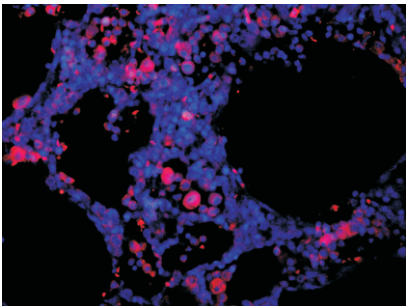
Product Images



Immunohistochemistry-Anti-Wnt2 pAb
Sample: Mouse brain tissue
Antigen retrieval: pH 9.0 Tris-EDTA buffer
Primary antibody: 1:200, 4°C, overnight
Secondary antibody-Biotin: 1:150, 37°C, 1h
Streptavidin-HRP: 1:200, 37°C, 30min
Visualization: DAB



Immunohistochemistry-Anti-Wnt2 pAb
Sample: Rat liver tissue
Antigen retrieval: pH 9.0 Tris-EDTA buffer
Primary antibody: 1:200, 4°C, overnight
Secondary antibody-Biotin: 1:150, 37°C, 1h
Streptavidin-HRP: 1:200, 37°C, 30min
Visualization: DAB



Immunofluorescence-Anti-Wnt2 pAb
Sample: Rat lung tissue
Primary antibody: 1:200, 4°C, overnight
Secondary antibody-CY3: 1:200, at room temperature, 1h