

Anti-FKBPL Rabbit pAb



WL05309

For Research Use Only. Not For Use In Diagnostic Procedures

Product Information

Product name	Anti-FKBPL Rabbit pAb	
Source	Rabbit	
Species reactivity	Human	
Tested applications	Western blot	1:500-1:1000
	<i>*Suggested working dilutions are given as a guide only. It is recommended that the user titrates the product for use in their own experiment using appropriate negative and positive controls.</i>	
Molecular Wt.	38 kDa	
	50/100/200/500/1000µl	
Pack size	Store at -20°C. Avoid freeze/thaw cycles.	
Storage	Supplied in 20 mM phosphate (pH 7.5), 150 mM NaCl, 100 µg/ml	
Storage buffer	BSA, 50% glycerol and less than 0.02% sodium azide	

General Information

Background	FKBPL, also named as DIR1, NG7 and WISp39, has similarity to the immunophilin protein family, which plays a role in immunoregulation and basic cellular processes involving protein folding and trafficking encoded protein is thought to have a potential role in the induced radioresistance. Also it appears to have some involvement in the control of the cell cycle.
Immunogen	Polyclonal antibody is produced by immunizing animals with a synthetic peptide of FKBPL.
Purification	Polyclonal antibody was purified by Protein A affinity chromatography.

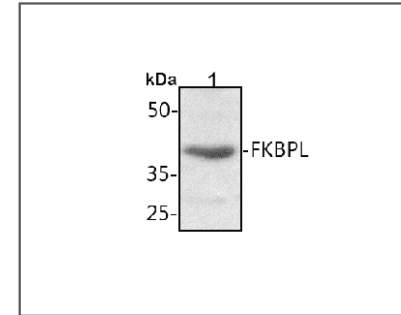
Anti-FKBPL Rabbit pAb



WL05309

For Research Use Only. Not For Use In Diagnostic Procedures

Product Images



Western blot-Anti-FKBPL pAb

Lane 1: Human SW480 cell lysate 20µg

Separation gel: 11% polyacrylamide

Electrophoresis: 100V, 4°C, 3h

Transmembrane: 100V, 4°C, 1h

Blocking: 5% w/v nonfat dry milk, 1×TBST, at RT with gentle shaking

Primary antibody: 1:500 in blocking buffer, 4°C, overnight

Secondary antibody (WLA023a) : 1:5000-1:10000, 45min

Detection: ECL, 30s-2min