

Anti-DMT1 Rabbit pAb



WL05401

For Research Use Only. Not For Use In Diagnostic Procedures

Product Information

Product name	Anti-DMT1 Rabbit pAb	
Source	Rabbit	
Species reactivity	Human, Mouse, Rat	
Tested applications	Western blot	1:500-1:1000
	<i>*Suggested working dilutions are given as a guide only. It is recommended that the user titrates the product for use in their own experiment using appropriate negative and positive controls.</i>	
Molecular Wt.	62 kDa	
Pack size	50/100/200/500/1000µl	
Storage	Store at -20°C. Avoid freeze/thaw cycles.	
Storage buffer	Supplied in 20 mM phosphate (pH 7.5), 150 mM NaCl, 100 µg/ml BSA, 50% glycerol and less than 0.02% sodium azide	

General Information

Background	SLC11A2 (also known as DMT1, Nramp2, and DCT1) is a member of the divalent cation transporters that plays a central role in iron homeostasis. As a membrane protein, SLC11A2 is localized on the apical membrane of enterocytes as well as in transferrin-cycle endosomes. Four isoforms of SLC11A2 exist due to the alternative splicing. They differ at the NH2 and COOH termini but share a common central domain.
Immunogen	Polyclonal antibody is produced by immunizing animals with a synthetic peptide of DMT1.
Purification	Polyclonal antibody was purified by Protein A affinity chromatography.

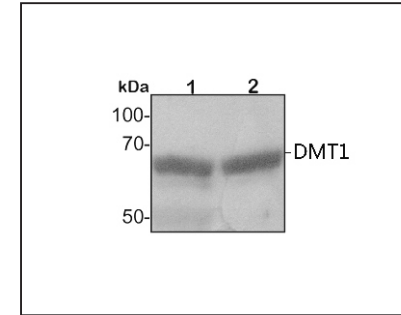
Anti-DMT1 Rabbit pAb



WL05401

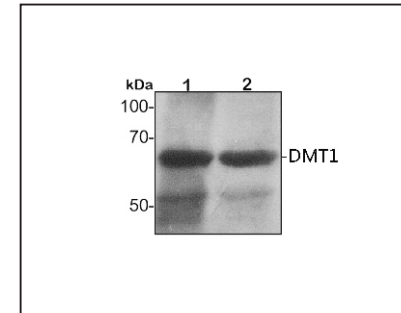
For Research Use Only. Not For Use In Diagnostic Procedures

Product Images



Western blot-Anti-DMT1 pAb

Lane 1: Human MCF-7 cell lysate 20µg
Lane 2: Human HEK-293 cell lysate 20µg
Separation gel: 8% polyacrylamide
Electrophoresis: 100V, 4°C, 3h
Transmembrane: 100V, 4°C, 1h
Blocking: 5% w/v nonfat dry milk, 1×TBST, at RT with gentle shaking
Primary antibody: 1:1000 in blocking buffer, 4°C, overnight
Secondary antibody (WLA023a): 1:5000-1:10000, 45min
Detection: ECL, 30s-2min



Western blot-Anti-DMT1 pAb

Lane 1: Rat colon tissue lysate 10µg
Lane 2: Rat stomach tissue lysate 10µg
Separation gel: 8% polyacrylamide
Electrophoresis: 100V, 4°C, 3h
Transmembrane: 100V, 4°C, 1h
Blocking: 5% w/v nonfat dry milk, 1×TBST, at RT with gentle shaking
Primary antibody: 1:500 in blocking buffer, 4°C, overnight
Secondary antibody (WLA023a): 1:5000-1:10000, 45min
Detection: ECL, 30s-2min