

Anti-P-STAT3 (Ser727) Rabbit pAb



WLP2412

For Research Use Only. Not For Use In Diagnostic Procedures

Product Information

Product name	Anti-P-STAT3 (Ser727) Rabbit pAb	
Source	Rabbit	
Species reactivity	Human, Mouse, Rat	
Tested applications	Western blot	1:1000-1500
	Immunohistochemistry	1:200

**Suggested working dilutions are given as a guide only. It is recommended that the user titrates the product for use in their own experiment using appropriate negative and positive controls.*

91kDa

Molecular Wt.

Pack size 50/100/200/500/1000μl

Storage Store at -20°C. **Avoid freeze/thaw cycles.**

Storage buffer Supplied in 20 mM phosphate (pH 7.5), 150 mM NaCl, 100 μg/ml BSA, 50% glycerol and less than 0.02% sodium azide

General Information

Background The protein encoded by this gene is a member of the STAT protein family. In response to cytokines and growth factors, STAT family members are phosphorylated by the receptor associated kinases, and then form homo- or heterodimers that translocate to the cell nucleus where they act as transcription activators. Although early reports indicate Stat3 activation by EGF and IL-6, it has been shown that Stat3β appears to be activated by both while Stat3α is activated by EGF, but not by IL-6. Phosphorylated on serine upon DNA damage, probably by ATM or ATR. Serine phosphorylation is important for the formation of stable DNA-binding STAT3 homodimers and maximal transcriptional activity. ARL2BP may participate in keeping the phosphorylated state of STAT3 within the nucleus.

Immunogen Polyclonal antibody is produced by immunizing animals with a synthetic peptide of P-STAT3 (Ser727).

Purification Polyclonal antibody was purified by immunogen affinity chromatography.

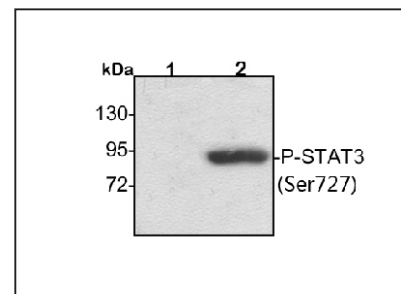
Anti-P-STAT3 (Ser727) Rabbit pAb



WLP2412

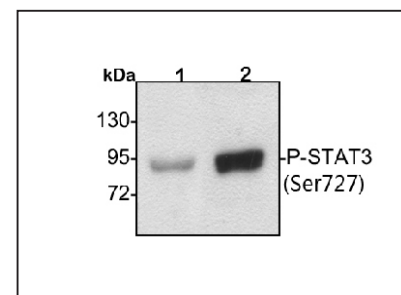
For Research Use Only. Not For Use In Diagnostic Procedures

Product Images



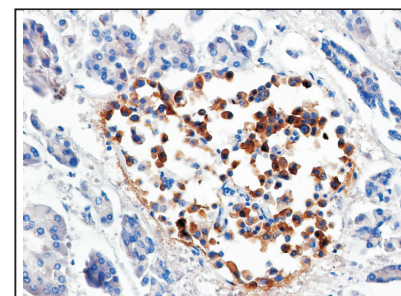
Western blot-Anti-P-STAT3 (Ser727) pAb

Lane 1: Human HepG2 cell lysate 20μg
Lane 2: Human HepG2 cell treated with TPA lysate 20μg
Separation gel: 8% polyacrylamide
Electrophoresis: 100V, 4°C, 3h
Transmembrane: 100V, 4°C, 1h
Blocking: 5% w/v nonfat dry milk, 1×TBST, at RT with gentle shaking
Primary antibody: 1:1500 in blocking buffer, 4°C, overnight
Secondary antibody (WLA023a): 1:5000-1:10000, 45min
Visualization: ECL, 30s-2min



Western blot-Anti-P-STAT3 (Ser727) pAb

Lane 1: Mouse testicle tissue lysate 30μg
Lane 2: Rat stomach tissue lysate 30μg
Separation gel: 8% polyacrylamide
Electrophoresis: 100V, 4°C, 3h
Transmembrane: 100V, 4°C, 1h
Blocking: 5% w/v nonfat dry milk, 1×TBST, at RT with gentle shaking
Primary antibody: 1:1500 in blocking buffer, 4°C, overnight
Secondary antibody (WLA023a): 1:5000-1:10000, 45min
Visualization: ECL, 30s-2min



Immunohistochemistry-Anti-P-STAT3 (Ser727) pAb

Sample: Human pancreas cancer tissue
Antigen retrieval: pH 9.0 Tris-EDTA buffer
Primary antibody: 1:200, 4°C, overnight
Secondary antibody-Biotin: 1:150, 37°C, 1h
Streptavidin-HRP: 1:200, 37°C, 30min
Color Developing: DAB

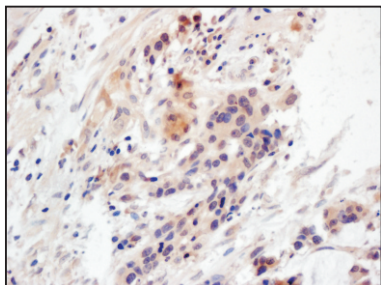
Anti-P-STAT3 (Ser727) Rabbit pAb



For Research Use Only. Not For Use In Diagnostic Procedures

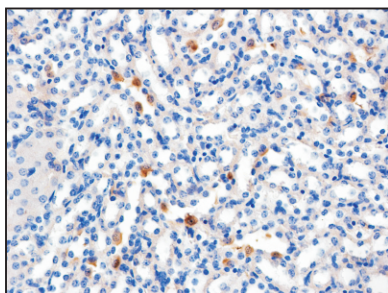
WLP2412

Product Information



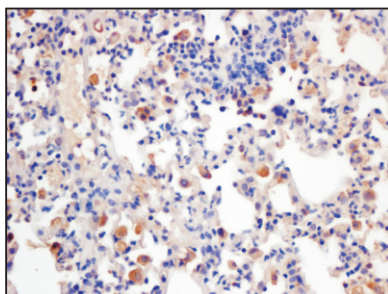
Immunohistochemistry-Anti-P-STAT3 (Ser727) pAb

Sample: Human colon cancer tissue
Antigen retrieval: pH 9.0 Tris-EDTA buffer
Primary antibody: 1:200, 4°C, overnight
Secondary antibody-Biotin: 1:150, 37°C, 1h
Streptavidin-HRP: 1:200, 37°C, 30min
Color Developing: DAB



Immunohistochemistry-Anti-P-STAT3 (Ser727) pAb

Sample: Mouse kidney tissue
Antigen retrieval: pH 9.0 Tris-EDTA buffer
Primary antibody: 1:200, 4°C, overnight
Secondary antibody-Biotin: 1:150, 37°C, 1h
Streptavidin-HRP: 1:200, 37°C, 30min
Color Developing: DAB



Immunohistochemistry-Anti-P-STAT3 (Ser727) pAb

Sample: Mouse lung tissue
Antigen retrieval: pH 9.0 Tris-EDTA buffer
Primary antibody: 1:200, 4°C, overnight
Secondary antibody-Biotin: 1:150, 37°C, 1h
Streptavidin-HRP: 1:200, 37°C, 30min
Color Developing: DAB

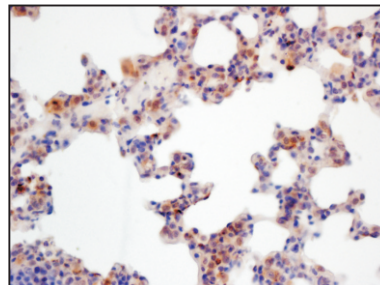
Anti-P-STAT3 (Ser727) Rabbit pAb



For Research Use Only. Not For Use In Diagnostic Procedures

WLP2412

Product Images



Immunohistochemistry-Anti-P-STAT3 (Ser727) pAb

Sample: Rat lung tissue
Antigen retrieval: pH 9.0 Tris-EDTA buffer
Primary antibody: 1:200, 4°C, overnight
Secondary antibody-Biotin: 1:150, 37°C, 1h
Streptavidin-HRP: 1:200, 37°C, 30min
Color Developing: DAB