

## Product Datasheet

### Anti-P-SMAD2(S465+S467)/ P-SMAD3(S423+S425) Rabbit pAb



WL02305

For Research Use Only. Not For Use In Diagnostic Procedures

## Product Information

**Product name** Anti-P-SMAD2(S465+S467)/P-SMAD3(S423+S425) Rabbit pAb

**Source** Rabbit

**Species reactivity** Human, Mouse, Rat, Rabbit

**Tested applications** Western blot 1:500  
Immunohistochemistry 1:100-1:200

*\*Suggested working dilutions are given as a guide only. It is recommended that the user titrates the product for use in their own experiment using appropriate negative and positive controls.*

**Molecular Wt.** 52,60 kDa

**Pack size** 50/100/200/500/1000μl

**Storage** Store at -20°C. **Avoid freeze/thaw cycles.**

**Storage buffer** Supplied in 20 mM phosphate (pH 7.5), 150 mM NaCl, 100 μg/ml

BSA, 50% glycerol and less than 0.02% sodium azide

## General Information

### Background

Members of the Smad family of signal transduction molecules are components of a critical intracellular pathway that transmit TGF-β signals from the cell surface into the nucleus. Smad1 and Smad5 are effectors of BMP-2 and BMP-4 function, while Smad2 and Smad3 are involved in TGF-β and Activin-mediated growth modulation. TGFβ type I receptor mediates phosphorylation of Smad2 (also designated Madr2 or JV18-1) at the C-terminal Ser 465 and Ser 467 residues, and phosphorylation of Smad3 at the C-terminal Ser 423 and Ser 425 residues in an obligate order. Upon phosphorylation and activation by the active TGFβ receptor complex, Smad2 and Smad3 homo-oligomerize or hetero-oligomerize with Smad4, and translocate into the nucleus.

### Immunogen

Polyclonal antibody is produced by immunizing animals with a synthetic peptide of P-SMAD2(S465+S467)/P-SMAD3(S423+S425).

### Purification

Polyclonal antibody was purified by immunogen affinity chromatography.

## Product Datasheet

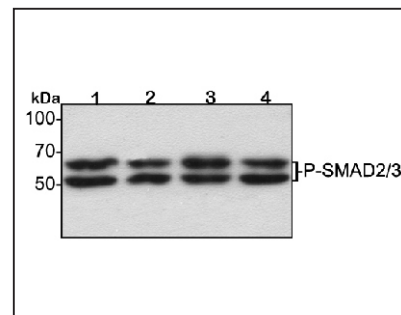
### Anti-P-SMAD2(S465+S467)/ P-SMAD3(S423+S425) Rabbit pAb



WL02305

For Research Use Only. Not For Use In Diagnostic Procedures

## Product Images



### Western blot-Anti-P-SMAD2/3 pAb

**Lane 1:** Human BGC-823 cell treated by LPS lysate 24μg

**Lane 2:** Human MGC-803 cell treated by LPS lysate 24μg

**Lane 3:** Human SGC-7901 cell treated by LPS lysate 24μg

**Lane 4:** Human MCF-7 cell treated by LPS lysate 24μg

**Separation gel:** 10% polyacrylamide

**Electrophoresis:** 100V, 4°C, 3h

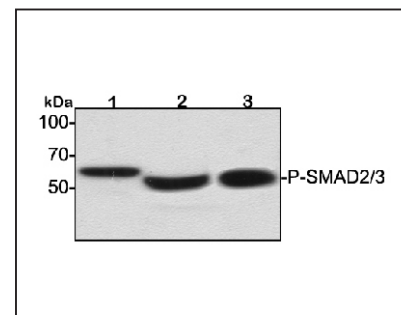
**Transmembrane:** 100V, 4°C, 1h

**Blocking:** 5% w/v nonfat dry milk, 1×TBST, at RT with gentle shaking

**Primary antibody:** 1:500 in blocking buffer, 4°C, overnight

**Secondary antibody (WLA023a) :** 1:5000-1:10000, 45min

**Detection:** ECL, 30s-2min



### Western blot-Anti-P-SMAD2/3 pAb

**Lane 1:** Mouse kidney tissue treated by LPS lysate 20μg

**Lane 2:** Mouse heart tissue treated by LPS lysate 20μg

**Lane 3:** Rabbit skin tissue treated by LPS lysate 20μg

**Separation gel:** 10% polyacrylamide

**Electrophoresis:** 100V, 4°C, 3h

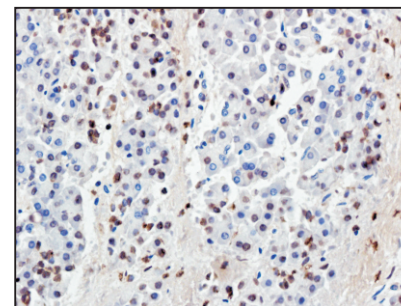
**Transmembrane:** 100V, 4°C, 1h

**Blocking:** 5% w/v nonfat dry milk, 1×TBST, at RT with gentle shaking

**Primary antibody:** 1:500 in blocking buffer, 4°C, overnight

**Secondary antibody (WLA023a) :** 1:5000-1:10000, 45min

**Detection:** ECL, 30s-2min



### Immunohistochemistry-Anti-P-SMAD2/3 pAb

**Sample:** Human pancreatic cancer tissue

**Antigen retrieval:** pH 9.0 Tris-EDTA buffer

**Primary antibody:** 1:100, 4°C, overnight

**Secondary antibody-Biotin:** 1:150, 37°C, 1h

**Streptavidin-HRP:** 1:200, 37°C, 30min

**Color Developing:** DAB

## Product Datasheet

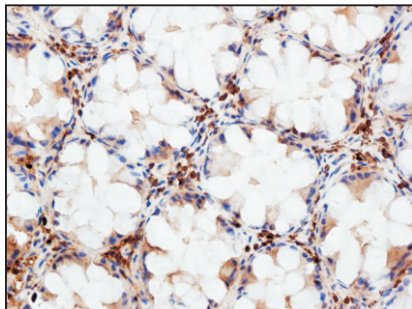
# Anti-P-SMAD2(S465+S467)/ P-SMAD3(S423+S425) Rabbit pAb



For Research Use Only. Not For Use In Diagnostic Procedures

WL02305

## Product Information



### Immunohistochemistry-Anti-P-SMAD2/3 pAb

**Sample:** Human colon cancer tissue

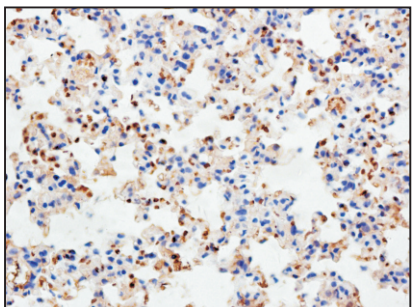
**Antigen retrieval:** pH 9.0 Tris-EDTA buffer

**Primary antibody:** 1:100, 4°C, overnight

**Secondary antibody-Biotin:** 1:150, 37°C, 1h

**Streptavidin-HRP:** 1:200, 37°C, 30min

**Color Developing:** DAB



### Immunohistochemistry-Anti-P-SMAD2/3 pAb

**Sample:** Mouse lung tissue

**Antigen retrieval:** pH 9.0 Tris-EDTA buffer

**Primary antibody:** 1:200, 4°C, overnight

**Secondary antibody-Biotin:** 1:150, 37°C, 1h

**Streptavidin-HRP:** 1:200, 37°C, 30min

**Color Developing:** DAB