

Anti-14-3-3 γ /YWHAG Rabbit pAb



WL03850

For Research Use Only. Not For Use In Diagnostic Procedures

Product Information

Product name	Anti-14-3-3 γ /YWHAG Rabbit pAb	
Source	Rabbit	
Species reactivity	Human, Mouse, Rat	
Tested applications	WB	1:500-1:1000
	IHC	1:100-1:400
	IF	1:200-1:300

Cellular localization Secreted and Cell membrane

Pack size 50/100/200/500/1000 μ l

Storage Store at -20°C. **Avoid freeze/thaw cycles.**

Storage buffer Supplied in 20 mM phosphate (pH 7.5), 150 mM NaCl, 100 μ g/ml BSA, 50% glycerol and less than 0.02% sodium azide

General Information

Background 14-3-3 proteins are highly conserved and ubiquitously expressed and regulate many cellular processes relevant to cancer biology, notably apoptosis, mitogenic signaling, nutrientsensing pathways and cell-cycle checkpoints by binding to phosphoserine-containing proteins. There are at least seven isoforms, β , γ , ϵ , σ , ζ , τ , and η that have been identified in mammals. 14-3-3 γ (YWHAG) has been shown to interact with RAF1 and protein kinase C, proteins involved in various signal transduction pathways. It is induced by growth factors in human vascular smooth muscle cells, and is also highly expressed in skeletal and heart muscles, suggesting an important role for this protein in muscle tissue.

Immunogen Polyclonal antibody is produced by immunizing animals with a synthetic peptide of 14-3-3 γ /YWHAG.

Purification Polyclonal antibody was purified by immunogen affinity chromatography.

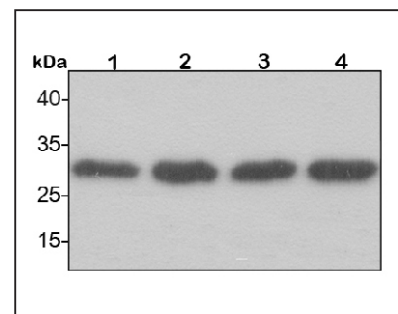
Anti-14-3-3 γ /YWHAG Rabbit pAb



WL03850

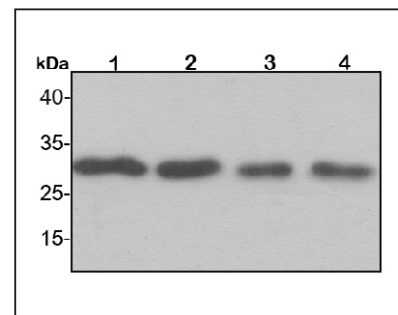
For Research Use Only. Not For Use In Diagnostic Procedures

Product Images



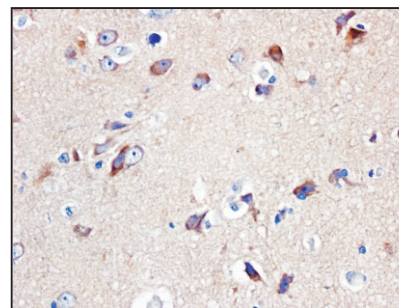
Western blot-Anti-14-3-3 γ /YWHAG pAb

Lane 1: Human Hela cell lysate
Lane 2: Human MCF-7 cell lysate
Lane 3: Human HEK-293 cell lysate
Lane 4: Human A549 cell lysate
All lanes: Anti-14-3-3 γ /YWHAG at 1:500 dilution
 Lysates/proteins at 20-50 μ g per lane.
 Predicted band size: 28 kDa
 Observed band size: 28-33 kDa



Western blot-Anti-14-3-3 γ /YWHAG pAb

Lane 1: Mouse heart lysate
Lane 2: Mouse liver lysate
Lane 3: Rat lung lysate
Lane 4: Rat stomach lysate
All lanes: Anti-14-3-3 γ /YWHAG at 1:500 dilution
 Lysates/proteins at 20-50 μ g per lane.
 Predicted band size: 28 kDa
 Observed band size: 28-33 kDa



Immunohistochemistry-Anti-14-3-3 γ /YWHAG pAb

Immunohistochemical analysis of paraffin-embedded human brain glioma using anti-14-3-3 γ /YWHAG Rabbit Antibody at 1:200 dilution. Perform heat mediated antigen retrieval with Tris-EDTA buffer pH 9.0

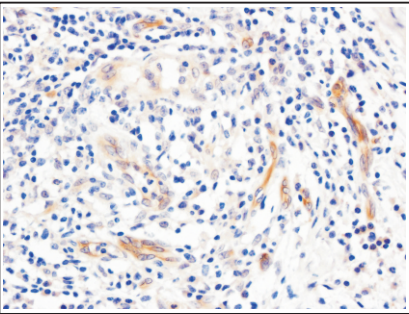
Anti-14-3-3 γ/YWHAG Rabbit pAb



WL03850

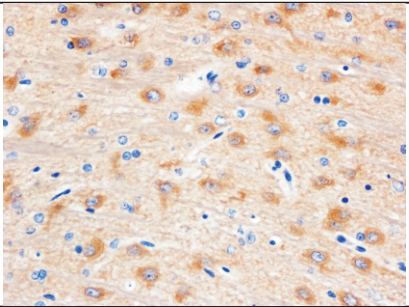
For Research Use Only. Not For Use In Diagnostic Procedures

Product Information



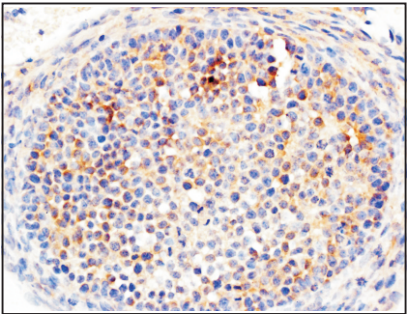
Immunohistochemistry-Anti-14-3-3 γ/YWHAG pAb

Immunohistochemical analysis of paraffin-embedded human colon cancer using anti-14-3-3 γ/YWHAG Rabbit Antibody at 1:200 dilution. Perform heat mediated antigen retrieval with Tris-EDTA buffer pH 9.0



Immunohistochemistry-Anti-14-3-3 γ/YWHAG pAb

Immunohistochemical analysis of paraffin-embedded rat brain using anti-14-3-3 γ/YWHAG Rabbit Antibody at 1:200 dilution. Perform heat mediated antigen retrieval with Tris-EDTA buffer pH 9.0



Immunohistochemistry-Anti-14-3-3 γ/YWHAG pAb

Immunohistochemical analysis of paraffin-embedded rat ovary using anti-14-3-3 γ/YWHAG Rabbit Antibody at 1:200 dilution. Perform heat mediated antigen retrieval with Tris-EDTA buffer pH 9.0

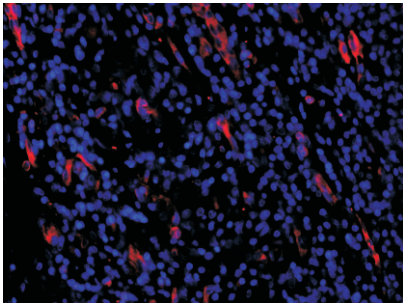
Anti-14-3-3 γ/YWHAG Rabbit pAb



WL03850

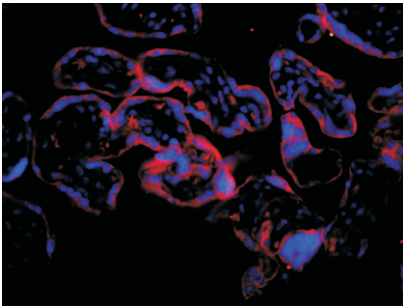
For Research Use Only. Not For Use In Diagnostic Procedures

Product Images



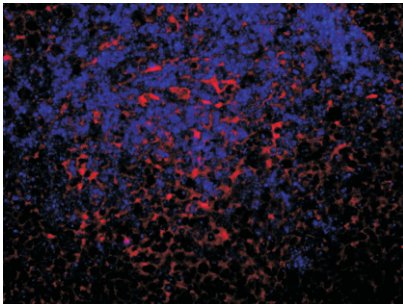
Immunofluorescence-Anti-14-3-3 γ/YWHAG pAb

Immunofluorescence analysis of paraffin-embedded human colon cancer using anti-14-3-3 γ/YWHAG Rabbit Antibody at 1:200 dilution. Perform heat mediated antigen retrieval with Tris-EDTA buffer pH 9.0



Immunofluorescence-Anti-14-3-3 γ/YWHAG pAb

Immunofluorescence analysis of paraffin-embedded human placenta using anti-14-3-3 γ/YWHAG Rabbit Antibody at 1:200 dilution. Perform heat mediated antigen retrieval with Tris-EDTA buffer pH 9.0



Immunofluorescence-Anti-14-3-3 γ/YWHAG pAb

Immunofluorescence analysis of paraffin-embedded mouse spleen using anti-14-3-3 γ/YWHAG Rabbit Antibody at 1:200 dilution. Perform heat mediated antigen retrieval with Tris-EDTA buffer pH 9.0

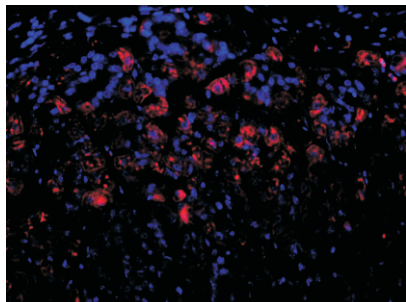
Anti-14-3-3 γ /YWHAG Rabbit pAb



WL03850

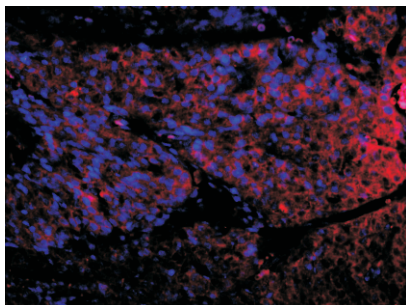
For Research Use Only. Not For Use In Diagnostic Procedures

Product Information



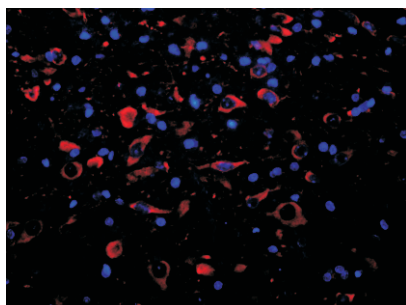
Immunofluorescence-Anti-14-3-3 γ /YWHAG pAb

Immunofluorescence analysis of paraffin-embedded mouse stomach using anti-14-3-3 γ /YWHAG Rabbit Antibody at 1:200 dilution.
Perform heat mediated antigen retrieval with Tris-EDTA buffer pH 9.0



Immunofluorescence-Anti-14-3-3 γ /YWHAG pAb

Immunofluorescence analysis of paraffin-embedded rat ovary using anti-14-3-3 γ /YWHAG Rabbit Antibody at 1:200 dilution.
Perform heat mediated antigen retrieval with Tris-EDTA buffer pH 9.0



Immunofluorescence-Anti-14-3-3 γ /YWHAG pAb

Immunofluorescence analysis of paraffin-embedded Rat brain using anti-14-3-3 γ /YWHAG Rabbit Antibody at 1:200 dilution.
Perform heat mediated antigen retrieval with Tris-EDTA buffer pH 9.0