

## Anti-ADAM10 Rabbit pAb



WL04661

For Research Use Only. Not For Use In Diagnostic Procedures

## Product Information

<b>Product name</b>	Anti-ADAM10 Rabbit pAb
<b>Source</b>	Rabbit
<b>Species reactivity</b>	Human, Mouse, Rat
<b>Tested applications</b>	WB 1:500-1:1000
<b>Pack size</b>	50/100/200/500/1000µl
<b>Storage</b>	Store at -20°C. <b>Avoid freeze/thaw cycles.</b>
<b>Storage buffer</b>	Supplied in 20 mM phosphate (pH 7.5), 150 mM NaCl, 100 µg/ml BSA, 50% glycerol and less than 0.02% sodium azide

## General Information

<b>Background</b>	ADAM10, a member of the ADAM (a disintegrin and metalloprotease) family, ADAM10 is a TNF-processing enzyme that cleaves pro-TNF, a membrane-bound precursor protein, at Ala 76-Val 77, which causes membrane shedding of soluble TNF.
-------------------	---

<b>Immunogen</b>	Polyclonal antibody is produced by immunizing animals with a synthetic peptide of ADAM10.
------------------	---

<b>Purification</b>	Polyclonal antibody was purified by immunogen affinity chromatography.
---------------------	--

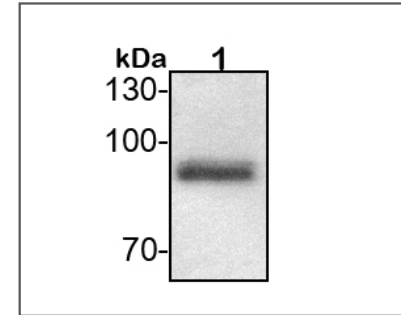
## Anti-ADAM10 Rabbit pAb



WL04661

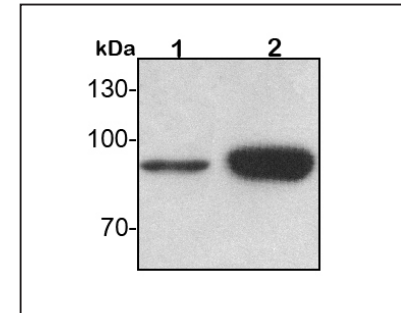
For Research Use Only. Not For Use In Diagnostic Procedures

## Product Images



## Western blot-Anti-ADAM10 pAb

**Lane 1:** Human HEK-293 cell lysate  
**All lanes:** Anti-ADAM10 at 1:500 dilution  
 Lysates/proteins at 20-50 µg per lane.  
 Predicted band size: 84 kDa  
 Observed band size: 84 kDa



## Western blot-Anti-ADAM10 pAb

**Lane 1:** Mouse kidney tissue lysate  
**Lane 2:** Rat liver tissue lysate  
**All lanes:** Anti-ADAM10 at 1:500 dilution  
 Lysates/proteins at 20-50 µg per lane.  
 Predicted band size: 84 kDa  
 Observed band size: 84 kDa