

Anti-FGF-2 Rabbit pAb



WL02664

For Research Use Only. Not For Use In Diagnostic Procedures

Product Information

Product name	Anti-FGF-2 Rabbit pAb		
Source	Rabbit		
Species reactivity	Human		
Tested applications	WB	1:1000	
	IHC	1:100-1:400	
Cellular localization	Secreted and Cell membrane		
Pack size	50/100/200/500/1000µl		
Storage	Store at -20°C. Avoid freeze/thaw cycles.		
Storage buffer	Supplied in 20 mM phosphate (pH 7.5), 150 mM NaCl, 100 µg/ml BSA, 50% glycerol and less than 0.02% sodium azide		

General Information

Background

Basic fibroblast growth factor, also known as bFGF, FGF2 or FGF- β , is a member of the fibroblast growth factor family. Recent evidence has shown that low levels of FGF2 play a key role in the incidence of excessive anxiety. FGF2, in conjunction with BMP4, promote differentiation of stem cells to mesodermal lineages. After differentiation, BMP4 and FGF2 treated cells generally produces higher amounts of osteogenic and chondrogenic differentiation than untreated stem cells. FGF2 has been shown to interact with casein kinase 2, alpha 1, RPL6 and ribosomal protein S19.

Immunogen

Polyclonal antibody is produced by immunizing animals with a synthetic peptide of FGF-2.

Purification

Polyclonal antibody was purified by Protein A affinity chromatography.

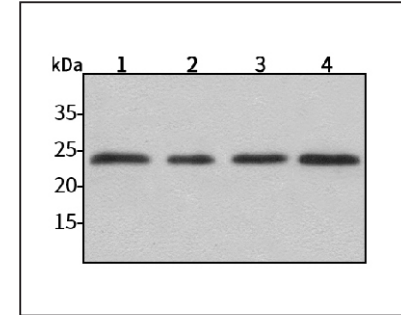
Anti-FGF-2 Rabbit pAb



WL02664

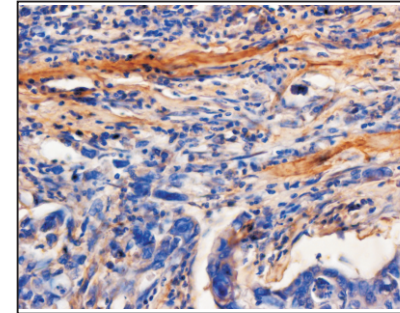
For Research Use Only. Not For Use In Diagnostic Procedures

Product Images



Western blot-Anti-FGF-2 pAb

Lane 1: Human HepG2 cell lysate
 Lane 2: Human Hela cell lysate
 Lane 3: Human BGC-823 cell lysate
 Lane 4: Human MGC-803 cell lysate
 All lanes: Anti-FGF-2 at 1:1000 dilution
 Lysates/proteins at 20-50 µg per lane.
 Predicted band size: 30 kDa
 Observed band size: 24,18,22 kDa



Immunohistochemistry-Anti-FGF-2 pAb

Immunohistochemical analysis of paraffin-embedded human pancreatic cancer using anti-FGF-2 Rabbit Antibody at 1:300 dilution. Perform heat mediated antigen retrieval with Tris-EDTA buffer pH 9.0