

Anti-FIP200 Rabbit pAb



WL03276

For Research Use Only. Not For Use In Diagnostic Procedures

Product Information

Product name	Anti-FIP200 Rabbit pAb	
Source	Rabbit	
Species reactivity	Human, Mouse, Rat	
Tested applications	WB	1:500
Pack size	50/100/200/500/1000µl	
Storage	Store at -20°C. Avoid freeze/thaw cycles.	
Storage buffer	Supplied in 20 mM phosphate (pH 7.5), 150 mM NaCl, 100 µg/ml BSA, 50% glycerol and less than 0.02% sodium azide	

General Information

Background

The protein encoded by this gene interacts with signaling pathways to coordinately regulate cell growth, cell proliferation, apoptosis, autophagy, and cell migration. FIP200 was later independently identified in a multi-drug resistance screen and named RB1CC1 (RB1-inducible coiled-coil 1) due to its induction by cytotoxic stress and RB1 expression regulation. Both the RB1CC1 and RB1 genes are preferentially co-expressed and contribute to the maturation of human embryonic musculoskeletal cells. FIP200 is part of an ULK1 complex along with Atg13 that is regulated by mTOR and is required for starvation induced autophagy.

Immunogen

Polyclonal antibody is produced by immunizing animals with a synthetic peptide of FIP200.

Purification

Polyclonal antibody was purified by Protein A affinity chromatography.

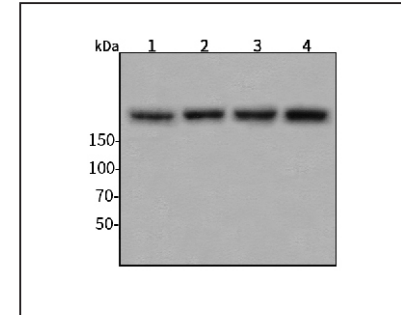
Anti-FIP200 Rabbit pAb



WL03276

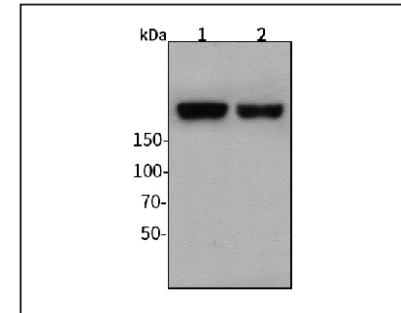
For Research Use Only. Not For Use In Diagnostic Procedures

Product Images



Western blot-Anti-FIP200 pAb

Lane 1: Human HepG2 cell lysate
 Lane 2: Human HeLa cell lysate
 Lane 3: Human HeLa cell lysate
 Lane 4: Human MGC-803 cell lysate
 All lanes: Anti-FIP200 at 1:500 dilution
 Lysates/proteins at 20-50 µg per lane.
 Predicted band size: 183 kDa
 Observed band size: 183kDa



Western blot-Anti-FIP200 pAb

Lane 1: Mouse heart tissue lysate
 Lane 2: Rat brain tissue lysate
 All lanes: Anti-FIP200 at 1:500 dilution
 Lysates/proteins at 20-50 µg per lane.
 Predicted band size: 183 kDa
 Observed band size: 183 kDa