

Anti-GSK3 $\alpha$  Rabbit pAb

WL05515

For Research Use Only. Not For Use In Diagnostic Procedures

## Product Information

<b>Product name</b>	Anti-GSK3 $\alpha$ Rabbit pAb	
<b>Source</b>	Rabbit	
<b>Species reactivity</b>	Human, Mouse, Rat	
<b>Tested applications</b>	WB	1:500-1:1000
<b>Pack size</b>	50/100/200/500/1000 $\mu$ l	
<b>Storage</b>	Store at -20°C. <b>Avoid freeze/thaw cycles.</b>	
<b>Storage buffer</b>	Supplied in 20 mM phosphate (pH 7.5), 150 mM NaCl, 100 $\mu$ g/ml BSA, 50% glycerol and less than 0.02% sodium azide	

## General Information

**Background**

This gene encodes a multifunctional Ser/Thr protein kinase that is implicated in the control of several regulatory proteins including glycogen synthase, and transcription factors, such as JUN. It also plays a role in the WNT and PI3K signaling pathways, as well as regulates the production of beta-amyloid peptides associated with Alzheimer's disease.

**Immunogen**

Polyclonal antibody is produced by immunizing animals with a synthetic peptide of GSK3 $\alpha$ .

**Purification**

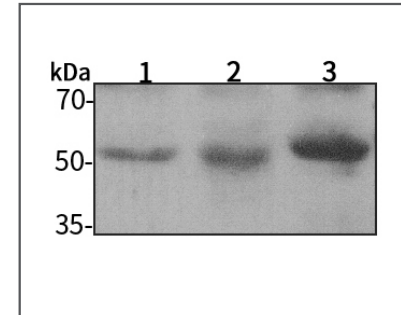
Polyclonal antibody was purified by proteinA affinity chromatography.

Anti-GSK3 $\alpha$  Rabbit pAb

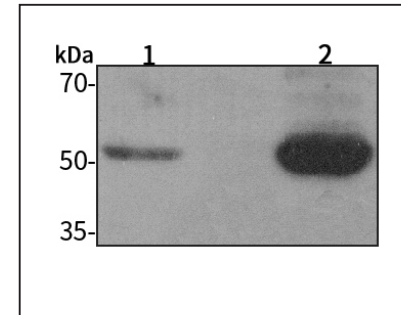
WL05515

For Research Use Only. Not For Use In Diagnostic Procedures

## Product Images

Western blot-Anti-GSK3 $\alpha$  pAb

Lane 1: Human HeLa cell lysate  
 Lane 2: Human HEK-293 cell lysate  
 Lane 3: Human HCT-116 cell lysate  
 All lanes: Anti-GSK3 $\alpha$  at 1:1000 dilution  
 Lysates/proteins at 20-50  $\mu$ g per lane.  
 Predicted band size: 51 kDa  
 Observed band size: 51 kDa

Western blot-Anti-GSK3 $\alpha$  pAb

Lane 1: Mouse kidney tissue lysate  
 Lane 2: Rat stomach tissue lysate  
 All lanes: Anti-GSK3 $\alpha$  at 1:1000 dilution  
 Lysates/proteins at 20-50  $\mu$ g per lane.  
 Predicted band size: 51 kDa  
 Observed band size: 51 kDa