

Anti-IL-1R-2 Rabbit pAb



WL04864

For Research Use Only. Not For Use In Diagnostic Procedures

Product Information

Product name	Anti-IL-1R-2 Rabbit pAb	
Source	Rabbit	
Species reactivity	Human, Mouse, Rat	
Tested applications	WB	1:500-1:1000
Pack size	50/100/200/500/1000µl	
Storage	Store at -20°C. Avoid freeze/thaw cycles.	
Storage buffer	Supplied in 20 mM phosphate (pH 7.5), 150 mM NaCl, 100 µg/ml BSA, 50% glycerol and less than 0.02% sodium azide	

General Information

Background Interleukin-1 receptor type 2 (IL1R2, also known as CD121b) is a cytokine receptor that belongs to the interleukin 1 receptor family. This protein binds interleukin alpha (IL1A), interleukin beta (IL1B), and interleukin 1 receptor, type I (IL1R1/IL1RA), and acts as a decoy receptor that inhibits the activity of its ligands.

Immunogen Polyclonal antibody is produced by immunizing animals with a synthetic peptide of IL-1R-2.

Purification Polyclonal antibody was purified by Protein A affinity chromatography.

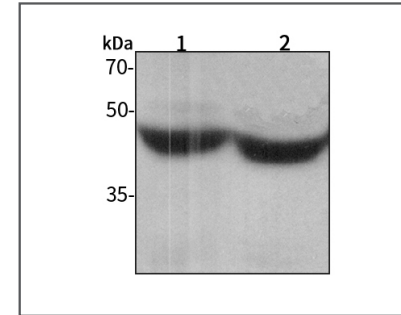
Anti-IL-1R-2 Rabbit pAb



WL04864

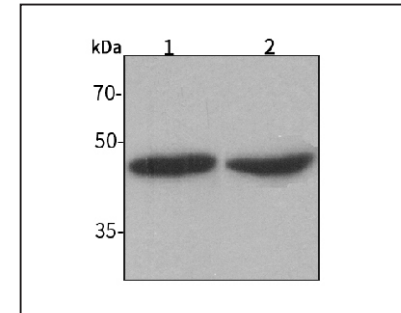
For Research Use Only. Not For Use In Diagnostic Procedures

Product Images



Western blot-Anti-IL-1R-2 pAb

Lane 1: Human HeLa cell lysate
Lane 2: Human MCF-7 cell lysate
All lanes: Anti-IL-1R-2 at 1:1000 dilution
 Lysates/proteins at 20-50 µg per lane.
 Predicted band size: 45 kDa
 Observed band size: 45 kDa



Western blot-Anti-IL-1R-2 pAb

Lane 1: Mouse liver tissue lysate
Lane 2: Rat colon tissue lysate
All lanes: Anti-IL-1R-2 at 1:1000 dilution
 Lysates/proteins at 20-50 µg per lane.
 Predicted band size: 45 kDa
 Observed band size: 45 kDa