

Anti-Glut1 Rabbit pAb



WL03141

For Research Use Only. Not For Use In Diagnostic Procedures

Product Information

Product name	Anti-Glut1 Rabbit pAb
Source	Rabbit
Species reactivity	Mouse, Rat
Tested applications	Western blot 1:500
Pack size	50/100/200/500/1000µl
Storage	Store at -20°C. Avoid freeze/thaw cycles.
Storage buffer	Supplied in 20 mM phosphate (pH 7.5), 150 mM NaCl, 100 µg/ml BSA, 50% glycerol and less than 0.02% sodium azide

General Information

Background Glut1 is a major glucose transporter in the mammalian blood-brain barrier. Glut1 is found primarily in the cell membrane and on the cell surface, where it can also function as a receptor for human T-cell leukemia virus (HTLV) I and II. Mutations in this gene have been found in a family with paroxysmal exertion-induced dyskinesia.

Immunogen Polyclonal antibody is produced by immunizing animals with a synthetic peptide of Glut1.

Purification Polyclonal antibody was purified by immunogen affinity chromatography.

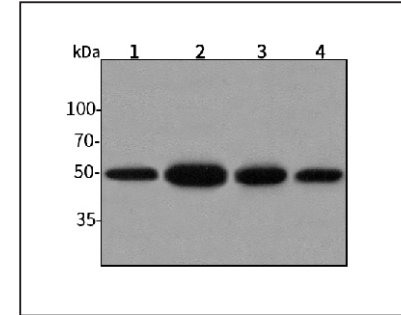
Anti-Glut1 Rabbit pAb



WL03141

For Research Use Only. Not For Use In Diagnostic Procedures

Product Images



Western blot-Anti-Glut1 pAb

Lane 1: Mouse kidney tissue lysate

Lane 2: Mouse heart tissue lysate

Lane 3: Rat brain tissue lysate

Lane 4: Rat stomach tissue lysate

All lanes: Anti-Glut1 at 1:500 dilution

Lysates/proteins at 20-50 µg per lane.

Predicted band size: 55 kDa

Observed band size: 50 kDa