

Anti-ErbB2 Rabbit pAb



WL0981

For Research Use Only. Not For Use In Diagnostic Procedures

Product Information

Product name	Anti-ErbB2 Rabbit pAb	
Source	Rabbit	
Species reactivity	Human	
Tested applications	WB	1:500-1:1000
Pack size	50/100/200/500/1000µl	
Storage	Store at -20°C. Avoid freeze/thaw cycles.	
Storage buffer	Supplied in 20 mM phosphate (pH 7.5), 150 mM NaCl, 100 µg/ml BSA, 50% glycerol and less than 0.02% sodium azide	

General Information

Background	The ErbB2 (HER2) proto-oncogene encodes a 185 kDa transmembrane, receptor-like glycoprotein with intrinsic tyrosine kinase activity. ErbB2 is a key therapeutic target in the treatment of breast cancer and other carcinomas and targeting the regulation of ErbB2 degradation by the c-Cbl-regulated proteolytic pathway is one potential therapeutic strategy. A number of cytoplasmic signaling molecules are thought to mediate mitogenic signaling from the activated ErbB2 oncoprotein through binding to phospho-tyrosine residues located within the intracellular portion of the ErbB2 molecule, including Grb2, PLCg, c-Src, Ras-GAP, SHC and Grb7.
Immunogen	Polyclonal antibody is produced by immunizing animals with a synthetic peptide of ErbB2.
Purification	Polyclonal antibody was purified by immunogen affinity chromatography.

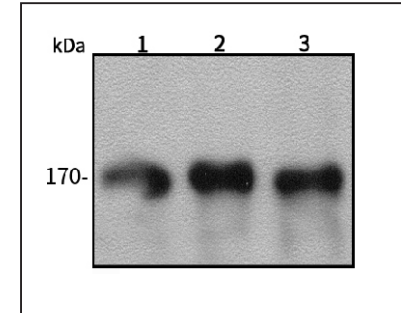
Anti-ErbB2 Rabbit pAb



WL0981

For Research Use Only. Not For Use In Diagnostic Procedures

Product Images



Western blot-Anti-ErbB2 pAb

Lane 1: Human SGC-7901 cell lysate

Lane 2: Human Hela cell lysate

Lane 3: Human MCF-7 cell lysate

All lanes: Anti-ErbB2 at 1:1000 dilution

Lysates/proteins at 20-50 µg per lane.

Predicted band size: 185 kDa

Observed band size: 185 kDa