

Anti- GSTT1 Rabbit pAb



WL04390

For Research Use Only. Not For Use In Diagnostic Procedures

Product Information

Product name	Anti- GSTT1 Rabbit pAb		
Source	Rabbit		
Species reactivity	Human		
Tested applications	WB	1:500-1:1000	
Pack size	50/100/200/500/1000 μ l		
Storage	Store at -20°C. Avoid freeze/thaw cycles.		
Storage buffer	Supplied in 20 mM phosphate (pH 7.5), 150 mM NaCl, 100 μ g/ml BSA, 50% glycerol and less than 0.02% sodium azide		

General Information

Background

GSTT1 belongs to a superfamily of proteins which catalyze the conjugation of reduced glutathione to a variety of electrophilic and hydrophobic compounds. GSTs can be divided into five main classes: alpha, mu, pi, theta, and zeta (which includes GSTT1 and GSTT2). The GSTT1 gene is haplotype-specific and is absent from 38% of the population. GSTT1-null genotypes are seen as having a higher risk of developing leukoplakia.

Immunogen

Polyclonal antibody is produced by immunizing animals with a synthetic peptide of GSTT1.

Purification

Polyclonal antibody was purified by immunogen affinity chromatography.

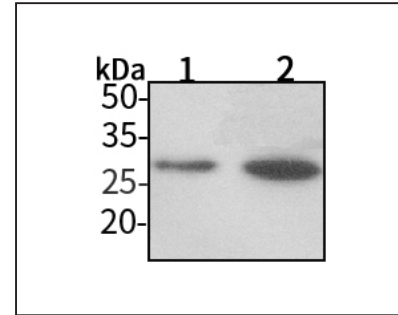
Anti- GSTT1 Rabbit pAb



WL04390

For Research Use Only. Not For Use In Diagnostic Procedures

Product Images



Western blot-Anti-GSTT1 pAb

Lane 1: Human HEK-293 cell lysate

Lane 2: Human A549 cell lysate

All lanes: Anti-GSTT1 at 1:500 dilution

Lysates/proteins at 20-50 μ g per lane.

Predicted band size: 27 kDa

Observed band size: 27 kDa