

Anti-IGFBP2 Rabbit pAb



WL05115

For Research Use Only. Not For Use In Diagnostic Procedures

Product Information

Product name	Anti-IGFBP2 Rabbit pAb	
Source	Rabbit	
Species reactivity	Human, Mouse, Rat	
Tested applications	WB	1:500-1:1000
Pack size	50/100/200/500/1000µl	
Storage	Store at -20°C. Avoid freeze/thaw cycles.	
Storage buffer	Supplied in 20 mM phosphate (pH 7.5), 150 mM NaCl, 100 µg/ml BSA, 50% glycerol and less than 0.02% sodium azide	

General Information

Background INS-like growth factors (IGFs) and their binding proteins (IGFBPs) have important metabolic roles in the human body. High expression levels of this protein promote the growth of several types of tumors and may be predictive of the chances of recovery of the patient.

Immunogen Polyclonal antibody is produced by immunizing animals with a synthetic peptide of IGFBP2.

Purification Polyclonal antibody was purified by Protein A affinity chromatography.

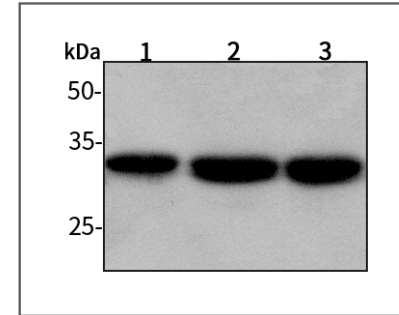
Anti-IGFBP2 Rabbit pAb



WL05115

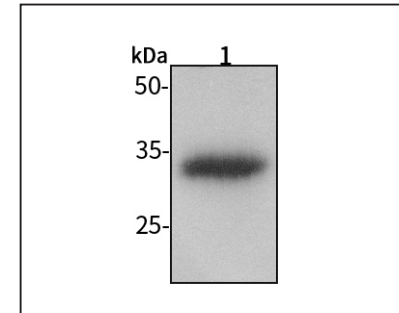
For Research Use Only. Not For Use In Diagnostic Procedures

Product Images



Western blot-Anti-IGFBP2 pAb

Lane 1: Human HEK-293 cell lysate
 Lane 2: Human HUVEC cell lysate
 Lane 3: Human SW480 cell lysate
 All lanes: Anti-IGFBP2 at 1:1000 dilution
 Lysates/proteins at 20-50 µg per lane.
 Predicted band size: 35 kDa
 Observed band size: 33 kDa



Western blot-Anti-IGFBP2 pAb

Lane 1: Rat stomach tissue lysate
 All lanes: Anti-IGFBP2 at 1:1000 dilution
 Lysates/proteins at 20-50 µg per lane.
 Predicted band size: 35 kDa
 Observed band size: 33 kDa