

Product Datasheet

Anti-P-SMAD2(S465+S467)/ P-SMAD3(S423+S425) Rabbit pAb



WL02305

For Research Use Only. Not For Use In Diagnostic Procedures

Product Information

Product name Anti-P-SMAD2(S465+S467)/P-SMAD3(S423+S425) Rabbit pAb

Source Rabbit

Species reactivity Human, Mouse, Rat, Rabbit

Tested applications

WB	1:500
IHC	1:100-1:200
IF	1:300

Cellular localization Secreted and Cell membrane

Pack size 50/100/200/500/1000µl

Storage Store at -20°C. **Avoid freeze/thaw cycles.**

Storage buffer Supplied in 20 mM phosphate (pH 7.5), 150 mM NaCl, 100 µg/ml BSA, 50% glycerol and less than 0.02% sodium azide

General Information

Background Members of the Smad family of signal transduction molecules are components of a critical intracellular pathway that transmit TGF-β signals from the cell surface into the nucleus. Smad1 and Smad5 are effectors of BMP-2 and BMP-4 function, while Smad2 and Smad3 are involved in TGF-β and Activin-mediated growth modulation. TGFβ type I receptor mediates phosphorylation of Smad2 (also designated Madr2 or JV18-1) at the C-terminal Ser 465 and Ser 467 residues, and phosphorylation of Smad3 at the C-terminal Ser 423 and Ser 425 residues in an obligate order. Upon phosphorylation and activation by the active TGFβ receptor complex, Smad2 and Smad3 homo-oligomerize or hetero-oligomerize with Smad4, and translocate into the nucleus.

Immunogen Polyclonal antibody is produced by immunizing animals with a synthetic peptide of P-SMAD2(S465+S467)/P-SMAD3(S423+S425).

Purification Polyclonal antibody was purified by immunogen affinity chromatography.

Product Datasheet

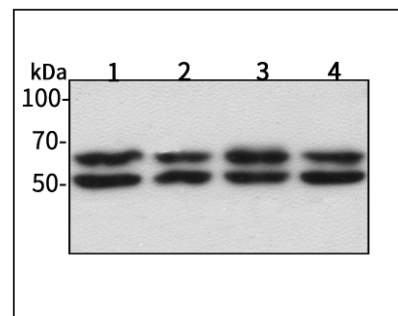
Anti-P-SMAD2(S465+S467)/ P-SMAD3(S423+S425) Rabbit pAb



WL02305

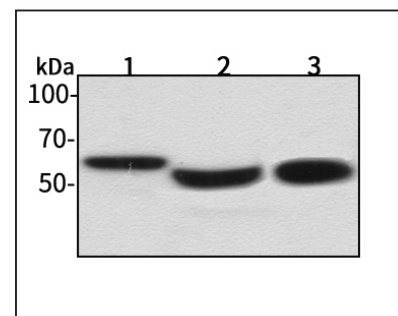
For Research Use Only. Not For Use In Diagnostic Procedures

Product Images



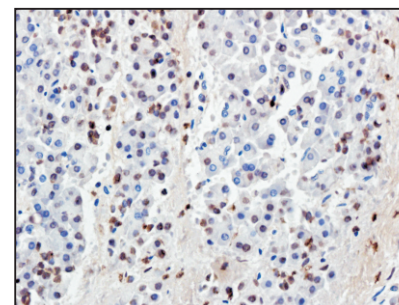
Western blot-Anti-P-SMAD2/3 pAb

Lane 1: Human Hela cell lysate
Lane 2: Human MCF-7 cell lysate
Lane 3: Human HEK-293 cell lysate
All lanes: Anti-P-SMAD2/3 at 1:500 dilution
Lysates/proteins at 20-50 µg per lane.
Predicted band size: 52,48 kDa
Observed band size: 52,60 kDa



Western blot-Anti-P-SMAD2/3 pAb

Lane 1: Mouse kidney tissue treated by LPS lysate
Lane 2: Mouse heart tissue treated by LPS lysate
Lane 3: Rabbit skin tissue treated by LPS lysate
All lanes: Anti-P-SMAD2/3 at 1:500 dilution
Lysates/proteins at 20-50 µg per lane.
Predicted band size: 52,48 kDa
Observed band size: 52,60 kDa



Immunohistochemistry-Anti-SMAD2/3 pAb

Immunohistochemical analysis of paraffin-embedded mouse kidney using anti-SMAD2/3 Rabbit Antibody at 1:100 dilution.
Perform heat mediated antigen retrieval with Tris-EDTA buffer pH 9.0

Product Datasheet

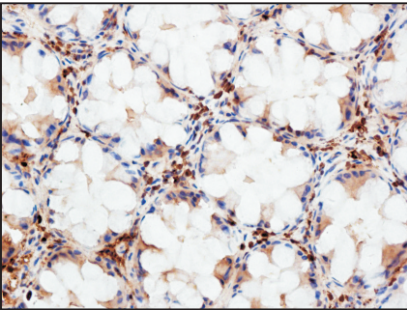
Anti-P-SMAD2(S465+S467)/
P-SMAD3(S423+S425) Rabbit pAb



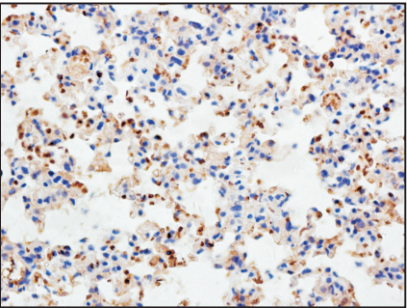
For Research Use Only. Not For Use In Diagnostic Procedures

WL02305

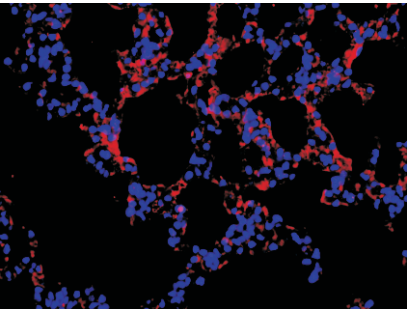
Product Information



Immunohistochemistry-Anti-SMAD2/3 pAb
Immunohistochemical analysis of paraffin-embedded human colon cancer using anti-SMAD2/3 Rabbit Antibody at 1:100 dilution.
Perform heat mediated antigen retrieval with Tris-EDTA buffer pH 9.0



Immunohistochemistry-Anti-SMAD2/3 pAb
Immunohistochemical analysis of paraffin-embedded mouse lung using anti-SMAD2/3 Rabbit Antibody at 1:200 dilution.
Perform heat mediated antigen retrieval with Tris-EDTA buffer pH 9.0



Immunofluorescence-Anti-SMAD2/3 pAb
Immunofluorescence analysis of paraffin-embedded rat lung using anti-SMAD2/3 Rabbit Antibody at 1:300 dilution.
Perform heat mediated antigen retrieval with Tris-EDTA buffer pH 9.0

Product Datasheet

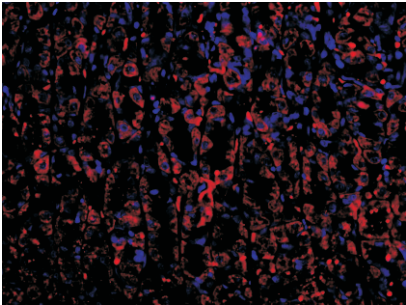
Anti-P-SMAD2(S465+S467)/
P-SMAD3(S423+S425) Rabbit pAb



For Research Use Only. Not For Use In Diagnostic Procedures

WL02305

Product Information



Immunofluorescence-Anti-SMAD2/3 pAb
Immunofluorescence analysis of paraffin-embedded rat stomach using anti-SMAD2/3 Rabbit Antibody at 1:300 dilution.
Perform heat mediated antigen retrieval with Tris-EDTA buffer pH 9.0