

## Anti-Lamin B Rabbit pAb



WL01775

For Research Use Only. Not For Use In Diagnostic Procedures

## Product Information

<b>Product name</b>	Anti-Lamin B Rabbit pAb		
<b>Source</b>	Rabbit		
<b>Species reactivity</b>	Human, Mouse, Rat		
<b>Tested applications</b>	WB	1:500-1:1000	
	IHC	1:150-1:300	
<b>Cellular localization</b>	Secreted and Cell membrane		
<b>Pack size</b>	50/100/200/500/1000µl		
<b>Storage</b>	Store at -20°C. <b>Avoid freeze/thaw cycles.</b>		
<b>Storage buffer</b>	Supplied in 20 mM phosphate (pH 7.5), 150 mM NaCl, 100 µg/ml BSA, 50% glycerol and less than 0.02% sodium azide		

## General Information

<b>Background</b>	The lamin family of proteins make up the matrix and are highly conserved in evolution. During mitosis, the lamina matrix is reversibly disassembled as the lamin proteins are phosphorylated. Lamin proteins are thought to be involved in nuclear stability, chromatin structure and gene expression. Vertebrate lamins consist of two types, A and B. B-type lamins undergo a series of modifications, such as farnesylation and phosphorylation. Increased phosphorylation of the lamins occurs before envelope disintegration and probably plays a role in regulating lamin associations. Nuclear Lamin B is fragmented as a consequence of apoptosis by an unidentified member of the ICE family.
<b>Immunogen</b>	Polyclonal antibody is produced by immunizing animals with a synthetic peptide of Lamin B.
<b>Purification</b>	Polyclonal antibody was purified by immunogen affinity chromatography.

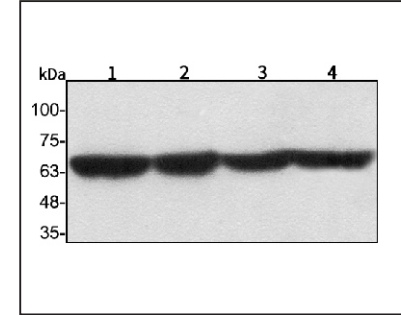
## Anti-Lamin B Rabbit pAb



WL01775

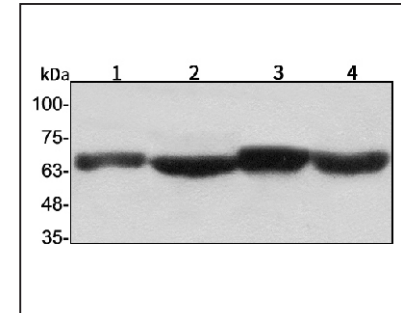
For Research Use Only. Not For Use In Diagnostic Procedures

## Product Images



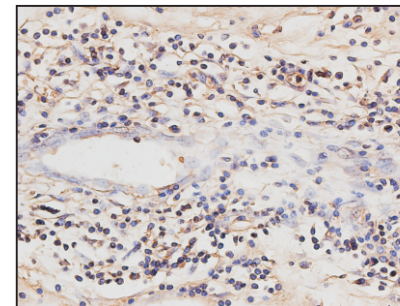
## Western blot-Anti-Lamin B pAb

Lane 1: Human HepG2 cell lysate  
 Lane 2: Human Hela cell lysate  
 Lane 3: Human BGC-823 cell lysate  
 Lane 4: Human MGC-803 cell lysate  
 All lanes: Anti-Lamin B at 1:1000 dilution  
 Lysates/proteins at 20-50 µg per lane.  
 Predicted band size: 67 kDa  
 Observed band size: 67 kDa



## Western blot-Anti-Lamin B pAb

Lane 1: Mouse stomach tissue lysate  
 Lane 2: Mouse brain tissue lysate  
 Lane 3: Rat lung tissue lysate  
 Lane 4: Rat lung tissue lysate  
 All lanes: Anti-Lamin B at 1:1000 dilution  
 Lysates/proteins at 20-50 µg per lane.  
 Predicted band size: 67 kDa  
 Observed band size: 67 kDa



## Immunohistochemistry-Anti-Lamin B pAb

Immunohistochemical analysis of paraffin-embedded human pancreatic cancer using anti-Lamin B Rabbit Antibody at 1:150 dilution. Perform heat mediated antigen retrieval with Tris-EDTA buffer pH 9.0