

## Anti-PKM2 Rabbit pAb



WL03290

For Research Use Only. Not For Use In Diagnostic Procedures

## Product Information

<b>Product name</b>	Anti-PKM2 Rabbit pAb		
<b>Source</b>	Rabbit		
<b>Species reactivity</b>	Human, Mouse, Rat		
<b>Tested applications</b>	Western blot	1:1000-1:2000	
	<i>*Suggested working dilutions are given as a guide only. It is recommended that the user titrates the product for use in their own experiment using appropriate negative and positive controls.</i>		
<b>Molecular Wt.</b>	58 kDa		
<b>Pack size</b>	50/100/200/500/1000 µl		
<b>Storage</b>	Store at -20°C. <b>Avoid freeze/thaw cycles.</b>		
<b>Storage buffer</b>	Supplied in 20 mM phosphate (pH 7.5), 150 mM NaCl, 100 µg/ml BSA, 50% glycerol and less than 0.02% sodium azide		

## General Information

**Background**

PKM2 is an isoenzyme of the glycolytic enzyme pyruvate kinase. PKM2 is expressed in most human tumors. Initially, a switch from PKM1 to PKM2 expression during tumorigenesis was discussed. PKM2 plays a key role in modulating glucose metabolism to support cell proliferation. PKM2, like other PK isoforms, catalyzes the last energy-generating step in glycolysis, but is unique in its capacity to be regulated. With the yeast two-hybrid system, gonococcal Opa proteins were found to interact with PKM2. The results suggest that direct molecular interaction with the host metabolic enzyme PKM2 is required for the acquisition of pyruvate and for gonococcal growth and survival.

**Immunogen**

Polyclonal antibody is produced by immunizing animals with a synthetic peptide of PKM2.

**Purification**

Polyclonal antibody was purified by Protein A affinity chromatography.

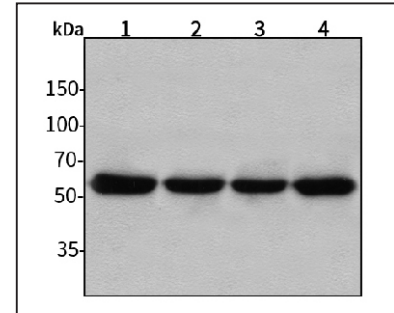
## Anti-PKM2 Rabbit pAb



WL03290

For Research Use Only. Not For Use In Diagnostic Procedures

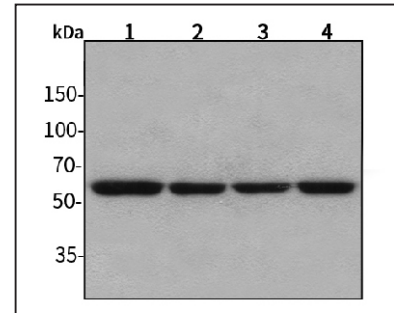
## Product Images



Western blot-Anti-PKM2 pAb

Lane 1: Human HepG2 cell lysate 30µg  
 Lane 2: Human Hela cell lysate 30µg  
 Lane 3: Human BGC-823 cell lysate 30µg  
 Lane 4: Human MGC-803 cell lysate 30µg  
 Separation gel: 8% polyacrylamide  
 Electrophoresis: 100V, 4°C, 3h  
 Transmembrane: 100V, 4°C, 1h

Blocking: 5% w/v nonfat dry milk, 1× TBST, at RT with gentle shaking  
 Primary antibody: 1:1000 in blocking buffer, 4°C, overnight  
 Secondary antibody (WLA023a) : 1:5000-1:10000, 45min  
 Detection: ECL, 30s-2min



Western blot-Anti-PKM2 pAb

Lane 1: Mouse kidney tissue lysate 30µg  
 Lane 2: Mouse heart tissue lysate 30µg  
 Lane 3: Rat lung tissue lysate 30µg  
 Lane 4: Rat stomach tissue lysate 30µg  
 Separation gel: 8% polyacrylamide  
 Electrophoresis: 100V, 4°C, 3h  
 Transmembrane: 100V, 4°C, 1h

Blocking: 5% w/v nonfat dry milk, 1× TBST, at RT with gentle shaking  
 Primary antibody: 1:1000 in blocking buffer, 4°C, overnight  
 Secondary antibody (WLA023a) : 1:5000-1:10000, 45min  
 Detection: ECL, 30s-2min