

Anti-MPO Rabbit pAb



WL02355

For Research Use Only. Not For Use In Diagnostic Procedures

Product Information

Product name	Anti-MPO Rabbit pAb		
Source	Rabbit		
Species reactivity	Human, Mouse, Rat		
Tested applications	WB	1:1000-1:2000	
	IHC	1:150	
Cellular localization	Secreted and Cell membrane		
Pack size	50/100/200/500/1000µl		
Storage	Store at -20°C. Avoid freeze/thaw cycles.		
Storage buffer	Supplied in 20 mM phosphate (pH 7.5), 150 mM NaCl, 100 µg/ml BSA, 50% glycerol and less than 0.02% sodium azide		

General Information

Background

Myeloperoxidase (MPO) is a heme protein synthesized during myeloid differentiation that constitutes the major component of neutrophil azurophilic granules. Produced as a single chain precursor, myeloperoxidase is subsequently cleaved into a light and heavy chain. The mature myeloperoxidase is a tetramer composed of 2 light chains and 2 heavy chains. In normal neutrophils, MPO is expressed as a dimer. Calreticulin, a calcium-binding protein residing in the ER, interacts specifically with fully glycosylated apopro-MPO. MPO is expressed at high levels in circulating neutrophils and monocytes but is not detectable in microglia, brain-specific macrophages or normal brain tissue.

Immunogen

Polyclonal antibody is produced by immunizing animals with a synthetic peptide of MPO.

Purification

Polyclonal antibody was purified by Protein A affinity chromatography.

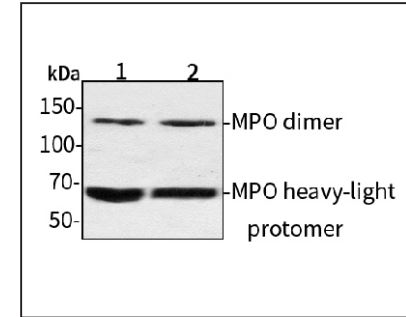
Anti-MPO Rabbit pAb



WL02355

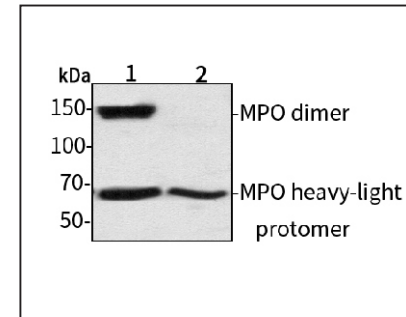
For Research Use Only. Not For Use In Diagnostic Procedures

Product Images



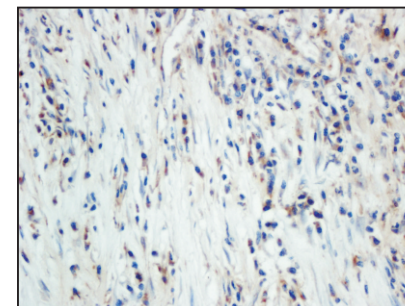
Western blot-Anti-MPO pAb

Lane 1: Human HepG2 cell lysate
 Lane 2: Human Hela cell lysate
 All lanes: Anti-MPO at 1:1000 dilution
 Lysates/proteins at 20-50 µg per lane.
 MOP heavy-light protomer:72 kDa
 MPO dimer:140 kDa



Western blot-Anti-MPO pAb

Lane 1: Mouse spleen tissue lysate
 Lane 2: Rat stomach tissue lysate
 All lanes: Anti-MPO at 1:1000 dilution
 Lysates/proteins at 20-50 µg per lane.
 MOP heavy-light protomer:72 kDa
 MPO dimer:140 kDa



Immunohistochemistry-Anti-MPO pAb

Immunohistochemical analysis of paraffin-embedded human colon cancer using anti-MPO Rabbit Antibody at 1:150 dilution.
 Perform heat mediated antigen retrieval with Tris-EDTA buffer pH 9.0