

Anti-Caspase-1 p20 Rabbit pAb



WL02996a

For Research Use Only. Not For Use In Diagnostic Procedures

Product Information

Product name	Anti-Caspase-1 p20 Rabbit pAb	
Source	Rabbit	
Species reactivity	Human, Mouse, Rat	
Tested applications	Western blot	1:1000-1:2000
	Immunohistochemistry	1:100-1:400

**Suggested working dilutions are given as a guide only. It is recommended that the user titrates the product for use in their own experiment using appropriate negative and positive controls.*

Molecular Wt.	20 kDa
Pack size	50/100/200/500/1000μl
Storage	Store at -20°C. Avoid freeze/thaw cycles.
Storage buffer	Supplied in 20 mM phosphate (pH 7.5), 150 mM NaCl, 100 μg/ml BSA, 50% glycerol and less than 0.02% sodium azide

General Information

Background	Caspase-1, or interleukin-1 β converting enzyme (ICE/ICE α), is a class I cysteine protease, which also includes caspases -4, -5, -11, and -12. Caspase-1 promotes maturation of interleukin IL-1 β and interleukin 18 (IL-18) by proteolytic cleavage of precursor forms into biologically active pro-inflammatory cytokines. Active caspase-1, a (p20/p10) $_2$ tetramer, is necessary and sufficient for cleavage of precursor IL-1 as well as for induction of apoptosis in some cell lines. The human Caspase-1 gene maps to chromosome 2q14 and encodes a cytoplasmic protein expressed in liver, heart, skeletal muscle kidney and testis. Caspase-1 has been implicated in inflammation, septic shock, and other situations such as wound healing and the growth of certain leukemias.
Immunogen	Polyclonal antibody is produced by immunizing animals with a synthetic peptide of Caspase-1 p20.

Purification	Polyclonal antibody was purified by Protein A affinity chromatography.
---------------------	--

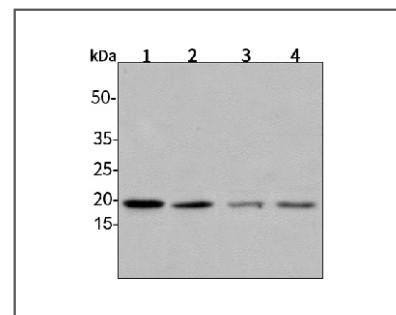
Anti-Caspase-1 p20 Rabbit pAb



WL02996a

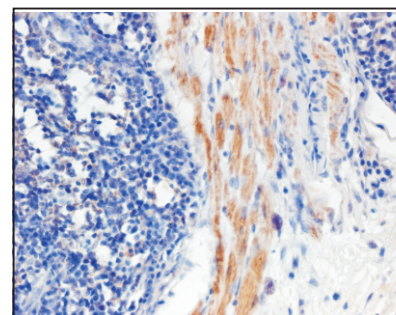
For Research Use Only. Not For Use In Diagnostic Procedures

Product Images



Western blot-Anti-Caspase-1 p20 pAb

Lane 1: Mouse kidney tissue lysate 30μg
 Lane 2: Mouse heart tissue lysate 30μg
 Lane 3: Rat liver tissue lysate 30μg
 Lane 4: Rat brain tissue lysate 30μg
 Separation gel: 15% polyacrylamide
 Electrophoresis: 100V, 4°C, 3h
 Transmembrane: 100V, 4°C, 1h
 Blocking: 5% w/v nonfat dry milk, 1 × TBST, at RT with gentle shaking
 Primary antibody: 1:1000 in blocking buffer, 4°C, overnight
 Secondary antibody (WLA023a) : 1:5000-1:10000, 45min



Immunohistochemistry-Anti-Caspase-1 p20 pAb

Sample: Rat lung tissue
 Antigen retrieval: pH 9.0 Tris-EDTA buffer
 Primary antibody: 1:200, 4°C, overnight
 Secondary antibody-Biotin: 1:150, 37°C, 1h
 Streptavidin-HRP: 1:200, 37°C, 30min
 Color Developing: DAB