

Anti-MRP1 Rabbit pAb



WL01027

For Research Use Only. Not For Use In Diagnostic Procedures

Product Information

Product name	Anti-MRP1 Rabbit pAb		
Source	Rabbit		
Species reactivity	Human		
Tested applications	WB	1:500-1:1000	
	IHC	1:100-1:200	
Cellular localization	Secreted and Cell membrane		
Pack size	50/100/200/500/1000µl		
Storage	Store at -20°C. Avoid freeze/thaw cycles.		
Storage buffer	Supplied in 20 mM phosphate (pH 7.5), 150 mM NaCl, 100 µg/ml BSA, 50% glycerol and less than 0.02% sodium azide		

General Information

Background	Multidrug resistance-associated protein 1 (MRP1/ABCC1) is a member of the MRP subfamily of ATP-binding cassette (ABC) transporters. MRP1 is an integral membrane protein that contains an Mdr-like core, an N-terminal membrane-bound region and a cytoplasmic linker, and it is expressed in various cerebral cells, as well as in lung, testis and peripheral blood. Research studies show that overexpression of MRP1 facilitates the elimination of therapeutic agents from cancer cells and confers drug resistance in those patients. Research studies also show that elevated expression of MRP1 is a negative prognostic marker for breast cancer and small cell lung cancer, as the level of MRP1 is predictive of the response and toxicity of chemotherapeutic agents in those patients.
Immunogen	Polyclonal antibody is produced by immunizing animals with a synthetic peptide of MRP1.
Purification	Polyclonal antibody was purified by Protein A affinity chromatography.

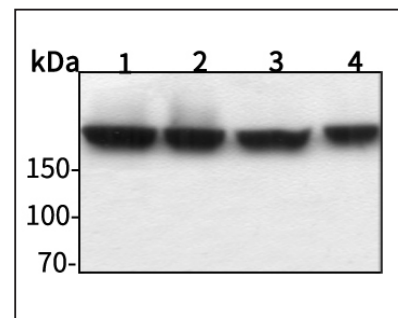
Anti-MRP1 Rabbit pAb



WL01027

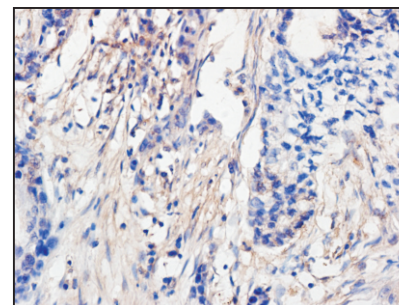
For Research Use Only. Not For Use In Diagnostic Procedures

Product Images



Western blot-Anti-MRP1 pAb

Lane 1: Human HepG2 cell lysate
 Lane 2: Human Hela cell lysate
 Lane 3: Human BGC-823 cell lysate
 Lane 4: Human MGC-803 cell lysate
 All lanes: Anti-MRP1 at 1:1000 dilution
 Lysates/proteins at 20-50 µg per lane.
 Predicted band size: 172 kDa
 Observed band size: 190 kDa



Immunohistochemistry-Anti-MRP1 pAb

Immunohistochemical analysis of paraffin-embedded human pancreatic cancer using anti-MRP1 Rabbit Antibody at 1:200 dilution.
 Perform heat mediated antigen retrieval with Tris-EDTA buffer pH 9.0