

## Anti-ZO-1 Rabbit pAb



WL03419

For Research Use Only. Not For Use In Diagnostic Procedures

## Product Information

<b>Product name</b>	Anti-ZO-1 Rabbit pAb	
<b>Source</b>	Rabbit	
<b>Species reactivity</b>	Human, Mouse, Rat	
<b>Tested applications</b>	Western blot	1:1000-1:2000
	<i>*Suggested working dilutions are given as a guide only. It is recommended that the user titrates the product for use in their own experiment using appropriate negative and positive controls.</i>	
<b>Molecular Wt.</b>	220 kDa	
<b>Pack size</b>	50/100/200/500/1000µl	
<b>Storage</b>	Store at -20°C. <b>Avoid freeze/thaw cycles.</b>	
<b>Storage buffer</b>	Supplied in 20 mM phosphate (pH 7.5), 150 mM NaCl, 100 µg/ml BSA, 50% glycerol and less than 0.02% sodium azide	

## General Information

<b>Background</b>	Tight junctions are complexes of proteins that create intercellular boundaries between the plasma membrane domains of epithelial and endothelial cells. Many of the tight junction-associated proteins are members of the membrane-associated guanylate kinase (MAGUK) family and include occludin, ZO-1, ZO-2 and ZO-3. ZO-1 and ZO-2 are required for tight junction formation and function. In subconfluent proliferating cells, ZO-1 and ZO-2 have been shown to colocalize to the nucleus and play a role in transcriptional regulation, possibly through facilitating nuclear import/export of transcriptional regulators. ZO-1 expression is significantly reduced in many breast cancer lines.
<b>Immunogen</b>	Polyclonal antibody is produced by immunizing animals with a synthetic peptide of ZO-1.
<b>Purification</b>	Polyclonal antibody was purified by protein A affinity chromatography.

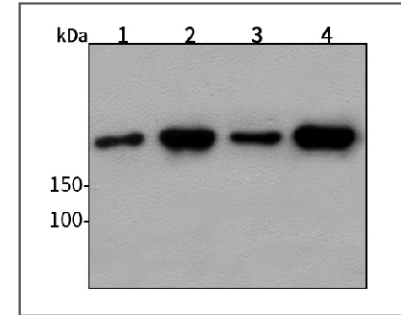
## Anti-ZO-1 Rabbit pAb



WL03419

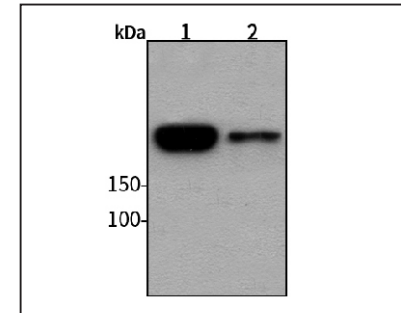
For Research Use Only. Not For Use In Diagnostic Procedures

## Product Images



## Western blot-Anti-ZO-1 pAb

Lane 1: Human HeLa cell lysate 30µg  
 Lane 2: Human BGC-823 cell lysate 30µg  
 Lane 3: Human MGC-803 cell lysate 30µg  
 Lane 4: Human MCF-7 cell lysate 30µg  
 Separation gel: 6% polyacrylamide  
 Electrophoresis: 100V, 4°C, 3h  
 Transmembrane: 100V, 4°C, 1h  
 Blocking: 5% w/v nonfat dry milk, 1×TBST, at RT with gentle shaking  
 Primary antibody: 1:1000 in blocking buffer, 4°C, overnight  
 Secondary antibody (WLA023a) : 1:5000-1:10000, 45min  
 Detection: ECL, 30s-2min



## Western blot-Anti-ZO-1 pAb

Lane 1: Rat lung tissue lysate 30µg  
 Lane 2: Rat spleen tissue lysate 30µg  
 Separation gel: 6% polyacrylamide  
 Electrophoresis: 100V, 4°C, 3h  
 Transmembrane: 100V, 4°C, 1h  
 Blocking: 5% w/v nonfat dry milk, 1×TBST, at RT with gentle shaking  
 Primary antibody: 1:1000 in blocking buffer, 4°C, overnight  
 Secondary antibody (WLA023a) : 1:5000-1:10000, 45min  
 Detection: ECL, 30s-2min