

Anti-SIRT3 Rabbit pAb



WL03840

For Research Use Only. Not For Use In Diagnostic Procedures

Product Information

Product name	Anti-SIRT3 Rabbit pAb
Source	Rabbit
Species reactivity	Human, Mouse, Rat
Tested applications	Western blot 1:1000-1:2000 Immunofluorescence 1:200 <small><i>*Suggested working dilutions are given as a guide only. It is recommended that the user titrates the product for use in their own experiment using appropriate negative and positive controls.</i></small>
Molecular Wt.	36 kDa
Pack size	50/100/200/500/1000μl
Storage	Store at -20°C. Avoid freeze/thaw cycles.
Storage buffer	Supplied in 20 mM phosphate (pH 7.5), 150 mM NaCl, 100 μg/ml BSA, 50% glycerol and less than 0.02% sodium azide

General Information

Background

The Silent Information Regulator (SIR2) family of genes is a highly conserved group of genes that encode nicotinamide adenine dinucleotide (NAD)-dependent protein deacetylases, also known as Class III histone deacetylases. SirT3, a mammalian homolog of Sir2, exists in human cells in two forms. Full-length SirT3 protein is processed in the mitochondrial matrix by the mitochondrial matrix processing peptidase (MMP). Both full-length and processed forms of SirT3 are enzymatically active and de-acetylate histone H3 at Lys9 and histone H4 at Lys16 in vitro. SirT3 also de-acetylates Lys642 of acetyl-CoA synthetase 2 (AceCS2) and activates AceCS2 activity in the mitochondria.

Immunogen

Polyclonal antibody is produced by immunizing animals with a synthetic peptide of SIRT3.

Purification

Polyclonal antibody was purified by Protein A affinity chromatography.

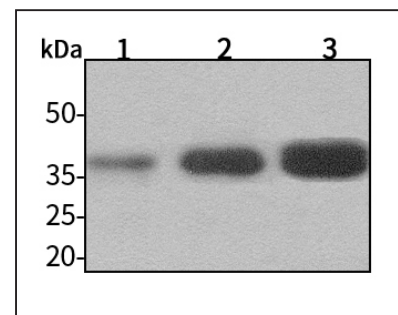
Anti-SIRT3 Rabbit pAb



WL03840

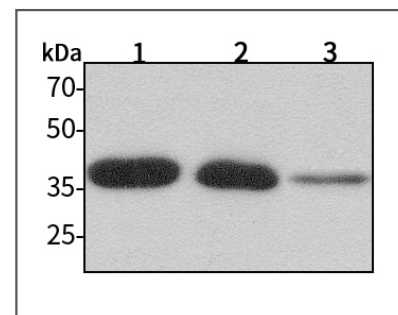
For Research Use Only. Not For Use In Diagnostic Procedures

Product Images



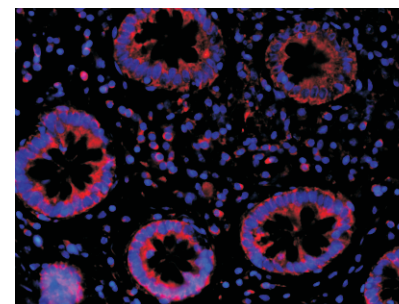
Western blot-Anti-SIRT3 pAb

Lane 1: Human MCF-7 cell lysate 30μg
 Lane 2: Human HEK-293 cell lysate 30μg
 Lane 3: Human A549 cell lysate 30μg
 Separation gel: 11% polyacrylamide
 Electrophoresis: 100V, 4°C, 3h
 Transmembrane: 100V, 4°C, 1h
 Blocking: 5% w/v nonfat dry milk, 1× TBST, at RT with gentle shaking
 Primary antibody: 1:1000 in blocking buffer, 4°C, overnight
 Secondary antibody (WLA023a) : 1:5000-1:10000, 45min
 Detection: ECL, 30s-2min



Western blot-Anti-SIRT3 pAb

Lane 1: Mouse kidney tissue lysate 30μg
 Lane 2: Mouse heart tissue lysate 30μg
 Lane 3: Rat liver tissue lysate 30μg
 Separation gel: 11% polyacrylamide
 Electrophoresis: 100V, 4°C, 3h
 Transmembrane: 100V, 4°C, 1h
 Blocking: 5% w/v nonfat dry milk, 1× TBST, at RT with gentle shaking
 Primary antibody: 1:1000 in blocking buffer, 4°C, overnight
 Secondary antibody (WLA023a) : 1:5000-1:10000, 45min
 Detection: ECL, 30s-2min



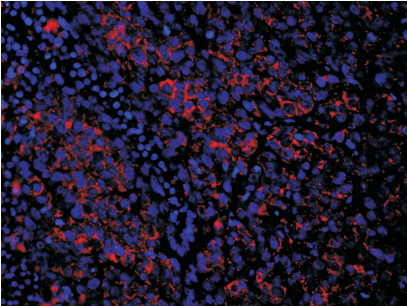
Immunofluorescence-Anti-SIRT3 pAb

Sample: Human colon cancer tissue
 Primary antibody: 1:200, 4°C, overnight
 Secondary antibody-FITC: 1:150, 37°C, 1h

Anti-SIRT3 Rabbit pAb

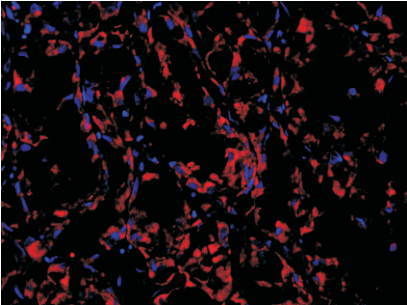
For Research Use Only. Not For Use In Diagnostic Procedures

Product Information



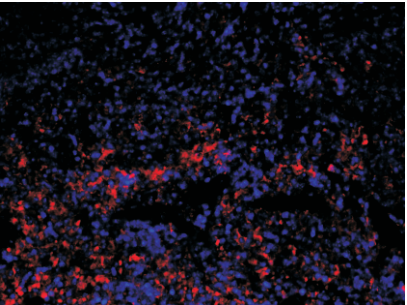
Immunofluorescence-Anti-SIRT3 pAb

Sample: Human skin cancer tissue
Primary antibody: 1:200, 4°C, overnight
Secondary antibody-FITC: 1:150, 37°C, 1h



Immunofluorescence-Anti-SIRT3 pAb

Sample: Human kidney tissue
Primary antibody: 1:200, 4°C, overnight
Secondary antibody-FITC: 1:150, 37°C, 1h



Immunofluorescence-Anti-SIRT3 pAb

Sample: Mouse spleen tissue
Primary antibody: 1:200, 4°C, overnight
Secondary antibody-FITC: 1:150, 37°C, 1h

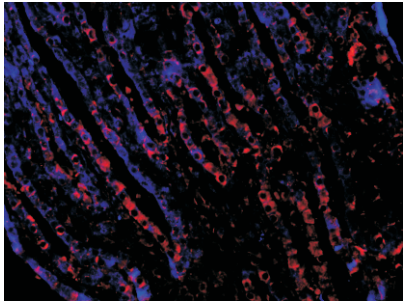


WL03840

Anti-SIRT3 Rabbit pAb

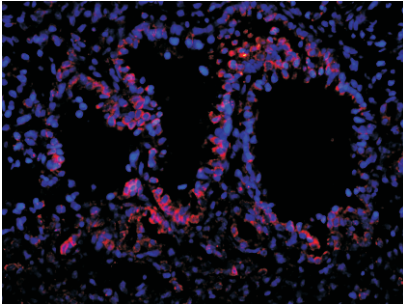
For Research Use Only. Not For Use In Diagnostic Procedures

Product Images



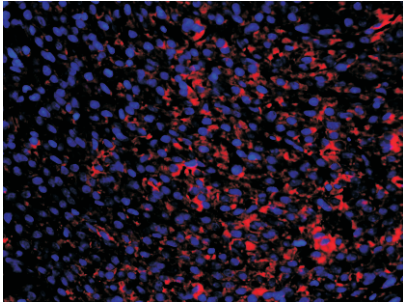
Immunofluorescence-Anti-SIRT3 pAb

Sample: Mouse kidney tissue
Primary antibody: 1:200, 4°C, overnight
Secondary antibody-FITC: 1:150, 37°C, 1h



Immunofluorescence-Anti-SIRT3 pAb

Sample: Rat lung tissue
Primary antibody: 1:200, 4°C, overnight
Secondary antibody-FITC: 1:150, 37°C, 1h



Immunofluorescence-Anti-SIRT3 pAb

Sample: Rat ovary tissue
Primary antibody: 1:200, 4°C, overnight
Secondary antibody-FITC: 1:150, 37°C, 1h



WL03840

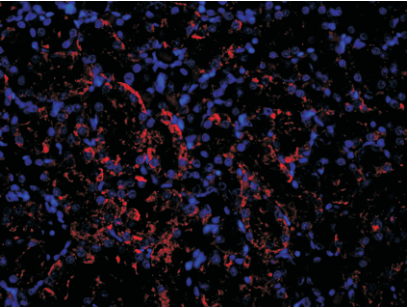
Anti-SIRT3 Rabbit pAb



For Research Use Only. Not For Use In Diagnostic Procedures

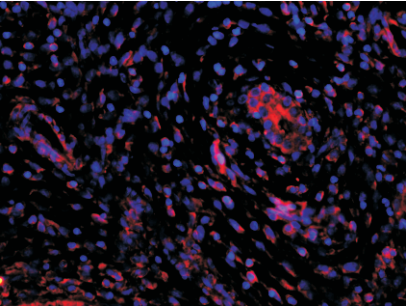
WL03840

Product Information



Immunofluorescence-Anti-SIRT3 pAb

Sample: Rat kidney tissue
Primary antibody: 1:200, 4°C, overnight
Secondary antibody-FITC: 1:150, 37°C, 1h



Immunofluorescence-Anti-SIRT3 pAb

Sample: Rat uterus tissue
Primary antibody: 1:200, 4°C, overnight
Secondary antibody-FITC: 1:150, 37°C, 1h