

Anti-Ihh Rabbit pAb



WL04452

For Research Use Only. Not For Use In Diagnostic Procedures

Product Information

Product name	Anti-Ihh Rabbit pAb	
Source	Rabbit	
Species reactivity	Human, Mouse, Rat	
Tested applications	WB	1:500-1:1000
Pack size	50/100/200/500/1000µl	
Storage	Store at -20°C. Avoid freeze/thaw cycles.	
Storage buffer	Supplied in 20 mM phosphate (pH 7.5), 150 mM NaCl, 100 µg/ml BSA, 50% glycerol and less than 0.02% sodium azide	

General Information

Background Ihh encodes a member of the hedgehog family of proteins which undergoes autocleavage to generate amino- and carboxy-terminal peptides. Each contain amino-terminal signal peptides and apparently function as secreted proteins involved in the mediation of various cell-cell interactions. The protein encoded by this gene specifically plays a role in bone growth and differentiation.

Immunogen Polyclonal antibody is produced by immunizing animals with a synthetic peptide of Ihh.

Purification Polyclonal antibody was purified by immunogen affinity chromatography.

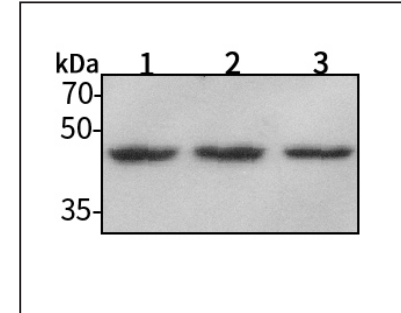
Anti-Ihh Rabbit pAb



WL04452

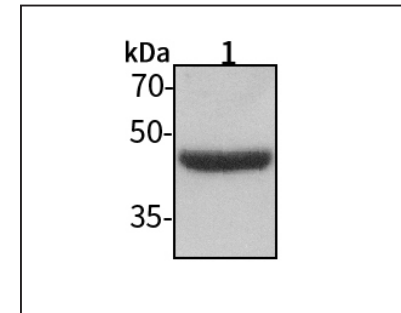
For Research Use Only. Not For Use In Diagnostic Procedures

Product Images



Western blot-Anti-Ihh pAb

Lane 1: Human MCF-7 cell lysate
 Lane 2: Human HEK-293 cell lysate
 Lane 3: Human A549 cell lysate
 All lanes: Anti-Ihh at 1:1000 dilution
 Lysates/proteins at 20-50 µg per lane.
 Predicted band size: 45 kDa
 Observed band size: 45 kDa



Western blot-Anti-Ihh pAb

Lane 1: Mouse kidney tissue lysate
 All lanes: Anti-Ihh at 1:1000 dilution
 Lysates/proteins at 20-50 µg per lane.
 Predicted band size: 45 kDa
 Observed band size: 45 kDa