

Anti-LDL Receptor Rabbit pAb



WL04685

For Research Use Only. Not For Use In Diagnostic Procedures

Product Information

Product name	Anti-LDL Receptor Rabbit pAb	
Source	Rabbit	
Species reactivity	Human	
Tested applications	WB	1:500-1:1000
Pack size	50/100/200/500/1000µl	
Storage	Store at -20°C. Avoid freeze/thaw cycles.	
Storage buffer	Supplied in 20 mM phosphate (pH 7.5), 150 mM NaCl, 100 µg/ml BSA, 50% glycerol and less than 0.02% sodium azide	

General Information

Background

LDLR (low density lipoprotein receptor) is a member of the LDL receptor gene family and is involved in receptor-mediated endocytosis of specific ligands. Low density lipoprotein (LDL) is normally bound at the cell membrane and taken into the cell ending up in lysosomes where the protein is degraded and the cholesterol is made available for repression of microsomal enzyme 3-hydroxy-3-methylglutaryl coenzyme A (HMG CoA) reductase, the rate-limiting step in cholesterol synthesis.

Immunogen

Polyclonal antibody is produced by immunizing animals with a synthetic peptide of LDL Receptor.

Purification

Polyclonal antibody was purified by immunogen affinity chromatography.

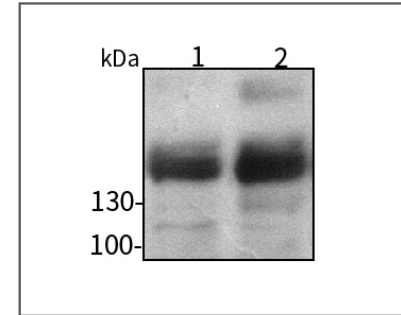
Anti-LDL Receptor Rabbit pAb



WL04685

For Research Use Only. Not For Use In Diagnostic Procedures

Product Images



Western blot-Anti-LDL Receptor pAb

Lane 1: Human MCF-7 cell lysate

Lane 2: Human HEK-293 cell lysate

All lanes: Anti-LDL Receptor at 1:500 dilution

Lysates/proteins at 20-50 µg per lane.

Predicted band size: 95 kDa

Observed band size: 150 kDa