

Anti-MKK6 Rabbit pAb



WLH4483

For Research Use Only. Not For Use In Diagnostic Procedures

Product Information

Product name	Anti-MKK6 Rabbit pAb	
Source	Rabbit	
Species reactivity	Human, Mouse	
Tested applications	IHC	1:100-1:400
Cellular localization	Secreted and Cell membrane	
Pack size	50/100/200/500/1000μl	
Storage	Store at -20°C. Avoid freeze/thaw cycles.	
Storage buffer	Supplied in 20 mM phosphate (pH 7.5), 150 mM NaCl, 100 μg/ml BSA, 50% glycerol and less than 0.02% sodium azide	

General Information

Background	MKK6 is member of the dual specificity protein kinase family, which functions as a mitogen-activated protein (MAP) kinase kinase. MAP kinases, also known as extracellular signal-regulated kinases (ERKs), act as an integration point for multiple biochemical signals.
Immunogen	Polyclonal antibody is produced by immunizing animals with a synthetic peptide of MKK6.
Purification	Polyclonal antibody was purified by immunogen affinity chromatography.

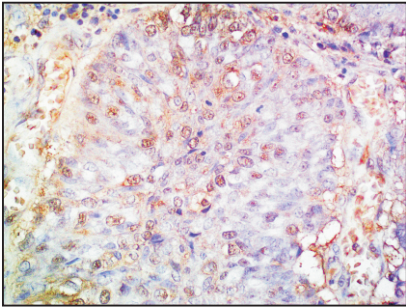
Anti-MKK6 Rabbit pAb



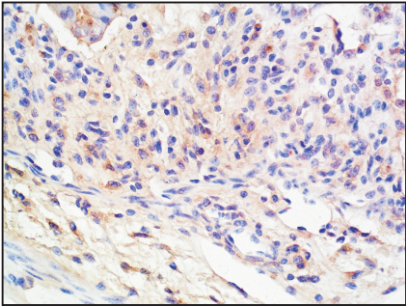
WLH4483

For Research Use Only. Not For Use In Diagnostic Procedures

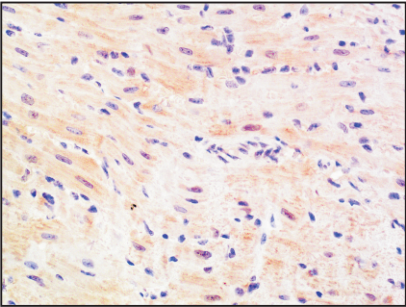
Product Images



Immunohistochemistry-Anti-MKK6 pAb
Immunohistochemical analysis of paraffin-embedded human bladder cancer using anti-MKK6 Rabbit Antibody at 1:200 dilution. Perform heat mediated antigen retrieval with Tris-EDTA buffer pH 9.0



Immunohistochemistry-Anti-MKK6 pAb
Immunohistochemical analysis of paraffin-embedded mouse colon using anti-MKK6 Rabbit Antibody at 1:200 dilution. Perform heat mediated antigen retrieval with Tris-EDTA buffer pH 9.0



Immunohistochemistry-Anti-MKK6 pAb
Immunohistochemical analysis of paraffin-embedded mouse heart using anti-MKK6 Rabbit Antibody at 1:200 dilution. Perform heat mediated antigen retrieval with Tris-EDTA buffer pH 9.0