

Anti-MEF2A Rabbit pAb



WL04803

For Research Use Only. Not For Use In Diagnostic Procedures

Product Information

Product name	Anti-MEF2A Rabbit pAb		
Source	Rabbit		
Species reactivity	Mouse, Rat		
Tested applications	WB	1:300-1:500	
Pack size	50/100/200/500/1000 μ l		
Storage	Store at -20°C. Avoid freeze/thaw cycles.		
Storage buffer	Supplied in 20 mM phosphate (pH 7.5), 150 mM NaCl, 100 μ g/ml BSA, 50% glycerol and less than 0.02% sodium azide		

General Information

Background MEF2A is a DNA-binding transcription factor that activates many muscle-specific, growth factor-induced, and stress-induced genes. The encoded protein can act as a homodimer or as a heterodimer and is involved in several cellular processes, including muscle development, neuronal differentiation, cell growth control, and apoptosis.

Immunogen Polyclonal antibody is produced by immunizing animals with a synthetic peptide of MEF2A.

Purification Polyclonal antibody was purified by immunogen affinity chromatography.

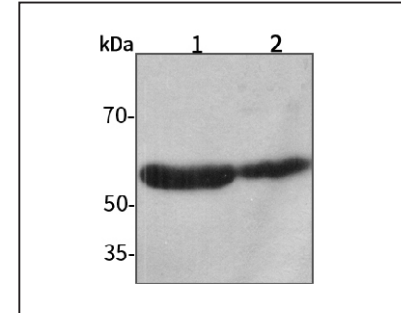
Anti-MEF2A Rabbit pAb



WL04803

For Research Use Only. Not For Use In Diagnostic Procedures

Product Images



Western blot-Anti-MEF2A pAb

Lane 1: Mouse kidney tissue lysate

Lane 2: Rat stomach tissue lysate

All lanes: Anti-MEF2A at 1:300 dilution

Lysates/proteins at 20-50 μ g per lane.

Predicted band size: 55 kDa

Observed band size: 55 kDa