

Anti-TSG101 Rabbit pAb



WL05130

For Research Use Only. Not For Use In Diagnostic Procedures

Product Information

Product name	Anti-TSG101 Rabbit pAb		
Source	Rabbit		
Species reactivity	Human, Mouse, Rat		
Tested applications	Western blot	1:500-1:1000	
	<i>*Suggested working dilutions are given as a guide only. It is recommended that the user titrates the product for use in their own experiment using appropriate negative and positive controls.</i>		
Molecular Wt.	44 kDa		
Pack size	50/100/200/500/1000µl		
Storage	Store at -20°C. Avoid freeze/thaw cycles.		
Storage buffer	Supplied in 20 mM phosphate (pH 7.5), 150 mM NaCl, 100 µg/ml BSA, 50% glycerol and less than 0.02% sodium azide		

General Information

Background TSG101(Tumor susceptibility gene 101 protein) is essential for endosomal sorting, membrane receptor degradation and the final stages of cytokinesis. It plays a crucial role for cell proliferation and cell survival. TSG101 has been identified as a candidate tumor suppressor gene and belongs to the ubiquitin-conjugating enzyme family. TSG101 is a marker for exosome.

Immunogen Polyclonal antibody is produced by immunizing animals with a synthetic peptide of TSG101.

Purification Polyclonal antibody was purified by immunogen affinity chromatography.

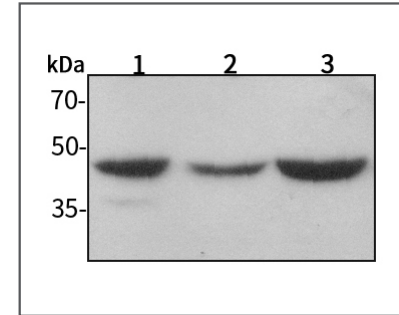
Anti-TSG101 Rabbit pAb



WL05130

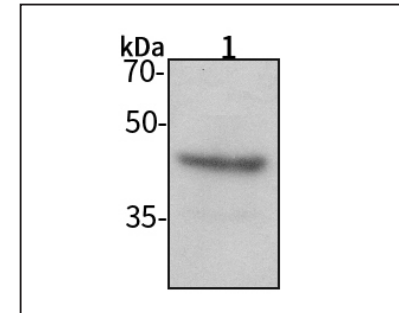
For Research Use Only. Not For Use In Diagnostic Procedures

Product Images



Western blot-Anti-TSG101 pAb

Lane 1: Human MCF-7 cell lysate 20µg
 Lane 2: Human HEK-293 cell lysate 20µg
 Lane 3: Human HUVEC cell lysate 20µg
 Separation gel: 10% polyacrylamide
 Electrophoresis: 100V, 4°C, 3h
 Transmembrane: 100V, 4°C, 1h
 Blocking: 5% w/v nonfat dry milk, 1×TBST, at RT with gentle shaking
 Primary antibody: 1:1000 in blocking buffer, 4°C, overnight
 Secondary antibody (WLA023a) : 1:5000-1:10000, 45min
 Detection: ECL, 30s-2min



Western blot-Anti-TSG101 pAb

Lane 1: Mouse heart tissue lysate 10µg
 Separation gel: 10% polyacrylamide
 Electrophoresis: 100V, 4°C, 3h
 Transmembrane: 100V, 4°C, 1h
 Blocking: 5% w/v nonfat dry milk, 1×TBST, at RT with gentle shaking
 Primary antibody: 1:1000 in blocking buffer, 4°C, overnight
 Secondary antibody (WLA023a) : 1:5000-1:10000, 45min
 Detection: ECL, 30s-2min