

Anti-ABCG2 Rabbit pAb



WL03192

For Research Use Only. Not For Use In Diagnostic Procedures

Product Information

Product name	Anti-ABCG2 Rabbit pAb
Source	Rabbit
Species reactivity	Human, Mouse, Rat
Tested applications	WB 1:500-1:1000
Pack size	50/100/200/500/1000µl
Storage	Store at -20°C. Avoid freeze/thaw cycles.
Storage buffer	Supplied in 20 mM phosphate (pH 7.5), 150 mM NaCl, 100 µg/ml BSA, 50% glycerol and less than 0.02% sodium azide

General Information

Background

ABCG2 (BCRP1/ABCP/MXR) is a member of the ATP-binding cassette transporter family that functions as ATP-dependent transporters for a wide variety of chemical compounds and are associated with drug-resistance in cancer cells. ABCG2 confers resistance for a variety of chemotherapeutic agents, including anthracyclines, mitoxantrone, bisantrene and topotecan. Under normal conditions, ABCG2 may serve a protective function by removing toxins from the cell, and plays an important role in regulating stem cell differentiation. ABCG2 is abundantly expressed in placenta, liver, intestine and stem cells.

Immunogen

Polyclonal antibody is produced by immunizing animals with a synthetic peptide of ABCG2.

Purification

Polyclonal antibody was purified by immunogen affinity chromatography.

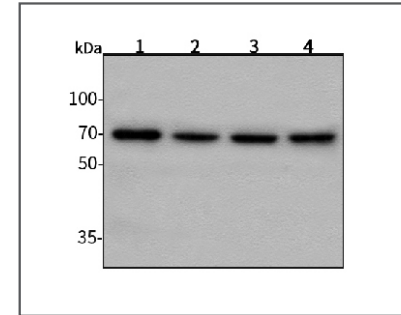
Anti-ABCG2 Rabbit pAb



WL03192

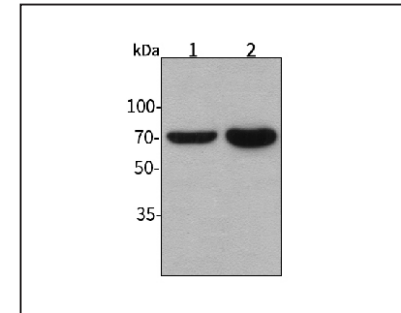
For Research Use Only. Not For Use In Diagnostic Procedures

Product Images



Western blot-Anti-ABCG2 pAb

Lane 1: Human HepG2 cell lysate
 Lane 2: Human HeLa cell lysate
 Lane 3: Human BGC-823 cell lysate
 Lane 4: Human MGC-803 cell lysate
 All lanes: Anti-ABCG2 at 1:1000 dilution
 Lysates/proteins at 20-50 µg per lane.
 Predicted band size: 72 kDa
 Observed band size: 72 kDa



Western blot-Anti-ABCG2 pAb

Lane 1: Mouse kidney tissue lysate
 Lane 2: Rat liver tissue lysate
 All lanes: Anti-ABCG2 at 1:1000 dilution
 Lysates/proteins at 20-50 µg per lane.
 Predicted band size: 72 kDa
 Observed band size: 72 kDa