

Anti-Lamin A/C Rabbit pAb



WL0457b

For Research Use Only. Not For Use In Diagnostic Procedures

Product Information

Product name	Anti-Lamin A/C Rabbit pAb	
Source	Rabbit	
Species reactivity	Human, Mouse, Rat	
Tested applications	WB	1:500-1:1000
	IHC	1:50-1:100
Cellular localization	Secreted and Cell membrane	
Pack size	50/100/200/500/1000µl	
Storage	Store at -20°C. Avoid freeze/thaw cycles.	
Storage buffer	Supplied in 20 mM phosphate (pH 7.5), 150 mM NaCl, 100 µg/ml BSA, 50% glycerol and less than 0.02% sodium azide	

General Information

Background

Lamins are nuclear membrane structural components that are important in maintaining normal cell functions such as cell cycle control, DNA replication, and chromatin organization. Lamin A/C is cleaved by caspase-6 and serves as a marker for caspase-6 activation. During apoptosis, lamin A/C is specifically cleaved into a large (41-50 kDa) and a small (28 kDa) fragment. The cleavage of lamins results in nuclear disorganization and cell death.

Immunogen

Polyclonal antibody is produced by immunizing animals with recombinant protein of Lamin A/C.

Purification

Polyclonal antibody was purified by immunogen affinity chromatography.

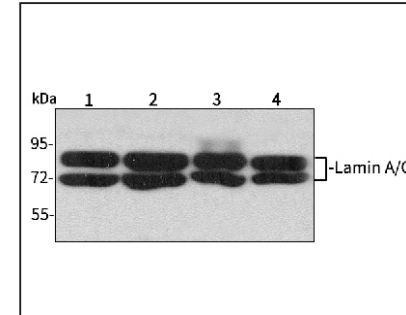
Anti-Lamin A/C Rabbit pAb



WL0457b

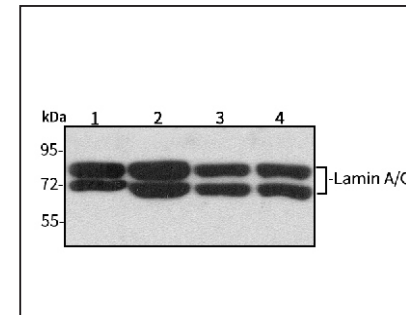
For Research Use Only. Not For Use In Diagnostic Procedures

Product Images



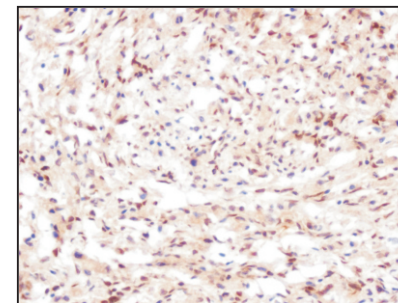
Western blot-Anti-Lamin A/C pAb

Lane 1: Human HepG2 cell lysate
 Lane 2: Human Hela cell lysate
 Lane 3: Human BGC-823 cell lysate
 Lane 4: Human MGC-803 cell lysate
 All lanes: Anti-Lamin A/C at 1:1000 dilution
 Lysates/proteins at 20-50 µg per lane.
 Predicted band size: 74,63 kDa
 Observed band size: 74,63 kDa



Western blot-Anti-Lamin A/C pAb

Lane 1: Mouse stomach tissue lysate
 Lane 2: Mouse skin tissue lysate
 Lane 3: Rat stomach tissue lysate
 Lane 4: Rat skin tissue lysate
 All lanes: Anti-Lamin A/C at 1:1000 dilution
 Lysates/proteins at 20-50 µg per lane.
 Predicted band size: 74,63 kDa
 Observed band size: 74,63 kDa



Immunohistochemistry-Anti-Lamin A/C pAb

Immunohistochemical analysis of paraffin-embedded human ovary cancer using anti-Lamin A/C Rabbit Antibody at 1:100 dilution. Perform heat mediated antigen retrieval with Tris-EDTA buffer pH 9.0

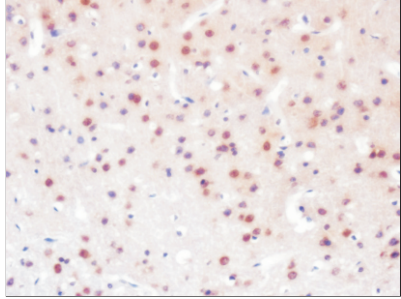


Anti-Lamin A/C Rabbit pAb

WL0457b

For Research Use Only. Not For Use In Diagnostic Procedures

Product Information



Immunohistochemistry-Anti-Lamin A/C pAb

Immunohistochemical analysis of paraffin-embedded rat brain using anti-Lamin A/C Rabbit Antibody at 1:100 dilution.

Perform heat mediated antigen retrieval with Tris-EDTA buffer pH 9.0