

## Anti-MMP7 Rabbit pAb



WL04679

For Research Use Only. Not For Use In Diagnostic Procedures

## Product Information

<b>Product name</b>	Anti-MMP7 Rabbit pAb	
<b>Source</b>	Rabbit	
<b>Species reactivity</b>	Human, Mouse, Rat	
<b>Tested applications</b>	WB	1:500-1:1000
<b>Pack size</b>	50/100/200/500/1000µl	
<b>Storage</b>	Store at -20°C. <b>Avoid freeze/thaw cycles.</b>	
<b>Storage buffer</b>	Supplied in 20 mM phosphate (pH 7.5), 150 mM NaCl, 100 µg/ml BSA, 50% glycerol and less than 0.02% sodium azide	

## General Information

**Background**

The matrix metalloproteinases (MMP) are a family of peptidase enzymes responsible for the degradation of extracellular matrix components, including collagen, gelatin, fibronectin, laminin and proteoglycan. Transcription of MMP genes is differentially activated by phorbol ester, lipopolysaccharide (LPS) or staphylococcal enterotoxin B (SEB).

**Immunogen**

Polyclonal antibody is produced by immunizing animals with a synthetic peptide of MMP7.

**Purification**

Polyclonal antibody was purified by immunogen affinity chromatography.

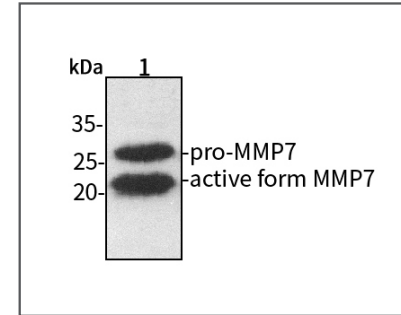
## Anti-MMP7 Rabbit pAb



WL04679

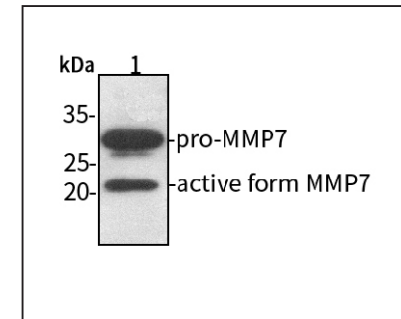
For Research Use Only. Not For Use In Diagnostic Procedures

## Product Images



## Western blot-Anti-MMP7 pAb

Lane 1: Human Hela cell lysate  
 All lanes: Anti-MMP7 at 1:500 dilution  
 Lysates/proteins at 20-50 µg per lane.  
 Predicted band size: pro-MMP7: 30 kDa  
 Observed band size: active form MMP7: 20 kDa



## Western blot-Anti-MMP7 pAb

Lane 1: Mouse heart tissue lysate  
 All lanes: Anti-MMP7 at 1:500 dilution  
 Lysates/proteins at 20-50 µg per lane.  
 Predicted band size: pro-MMP7: 30 kDa  
 Observed band size: active form MMP7: 20 kDa