

Anti-SLC12A1/NKCC2 Rabbit pAb



WL04681

For Research Use Only. Not For Use In Diagnostic Procedures

Product Information

Product name	Anti-SLC12A1/NKCC2 Rabbit pAb	
Source	Rabbit	
Species reactivity	Human	
Tested applications	Western blot	1:1000-1:2000
	<i>*Suggested working dilutions are given as a guide only. It is recommended that the user titrates the product for use in their own experiment using appropriate negative and positive controls.</i>	
Molecular Wt.	121 kDa	
Pack size	50/100/200/500/1000µl	
Storage	Store at -20°C. Avoid freeze/thaw cycles.	
Storage buffer	Supplied in 20 mM phosphate (pH 7.5), 150 mM NaCl, 100 µg/ml BSA, 50% glycerol and less than 0.02% sodium azide	

General Information

Background

Na-K-Cl cotransporters (NKCC) are channel proteins that aid in the transcellular movement of chloride across both secretory and absorptive epithelia. It plays a key role in concentrating urine and accounts for most of the NaCl resorption. It is sensitive to such diuretics as furosemide and bumetanide.

Immunogen

Polyclonal antibody is produced by immunizing animals with a synthetic peptide of SLC12A1/NKCC2.

Purification

Polyclonal antibody was purified by Protein A affinity chromatography.

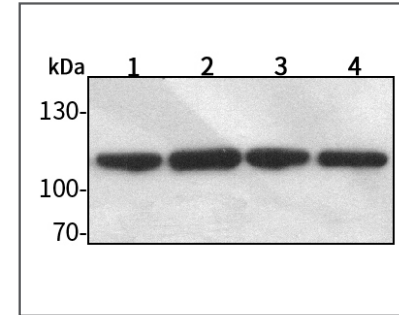
Anti-SLC12A1/NKCC2 Rabbit pAb



WL04681

For Research Use Only. Not For Use In Diagnostic Procedures

Product Images



Western blot-Anti-SLC12A1/NKCC2 pAb

Lane 1: Human HeLa cell lysate 30µg

Lane 2: Human MCF-7 cell lysate 30µg

Lane 3: Human HEK-293 cell lysate 30µg

Lane 4: Human A549 cell lysate 30µg

Separation gel: 8% polyacrylamide

Electrophoresis: 100V, 4°C, 3h

Transmembrane: 100V, 4°C, 1h

Blocking: 5% w/v nonfat dry milk, 1×TBST, at RT with gentle shaking

Primary antibody: 1:1000 in blocking buffer, 4°C, overnight

Secondary antibody (WLA023a) : 1:5000-1:10000, 45min

Detection: ECL, 30s-2min