

Anti-RXRA Rabbit pAb



WL02710

For Research Use Only. Not For Use In Diagnostic Procedures

Product Information

Product name	Anti-RXRA Rabbit pAb	
Source	Rabbit	
Species reactivity	Human, Mouse, Rat	
Tested applications	Western blot	1:500-1:1000

**Suggested working dilutions are given as a guide only. It is recommended that the user titrates the product for use in their own experiment using appropriate negative and positive controls.*

Molecular Wt.	51 kDa
Pack size	50/ 100/200/500/1000 μ l
Storage	Store at -20°C. Avoid freeze/thaw cycles.
Storage buffer	Supplied in 20 mM phosphate (pH 7.5), 150 mM NaCl, 100 μ g/ml BSA, 50% glycerol and less than 0.02% sodium azide

General Information

Background	Two families of retinoid receptors, RARs and RXRs, have been identified. Retinoic acid receptors (RARs) include RAR α , RAR β and RAR γ , each of which have a high affinity for all trans-retinoic acids and belong to the same class of nuclear transcription factors as thyroid hormone receptors, vitamin D3 receptor and ecdysone receptor. Retinoid X receptor α (RXR α) is the founding RXR family member and is predominantly expressed in the liver, kidney, epidermis, intestine, and a variety of tissues. The RXRA/PPARA heterodimer is required for PPARA transcriptional activity on fatty acid oxidation genes such as ACOX1 and the cytochrome P450 system genes.
Immunogen	Polyclonal antibody is produced by immunizing animals with a synthetic peptide of RXRA.
Purification	Polyclonal antibody was purified by immunogen affinity chromatography.

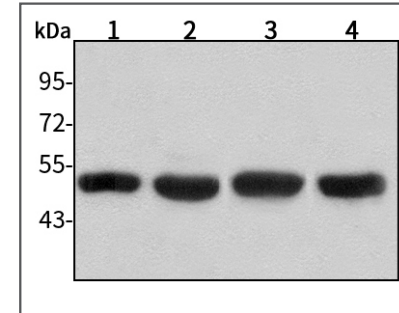
Anti-RXRA Rabbit pAb



WL02710

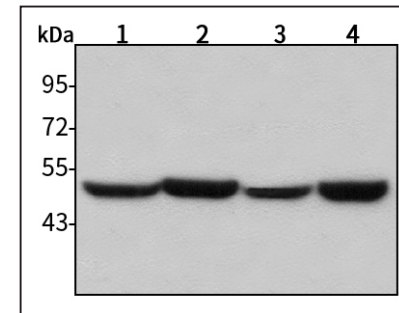
For Research Use Only. Not For Use In Diagnostic Procedures

Product Images



Western blot-Anti-RXRA pAb

Lane 1: Human HepG2 cell lysate 30 μ g
 Lane 2: Human Hela cell lysate 30 μ g
 Lane 3: Human BGC-823 cell lysate 30 μ g
 Lane 4: Human MCF-7 cell lysate 30 μ g
 Separation gel: 10% polyacrylamide
 Electrophoresis: 100V, 4°C, 3h
 Transmembrane: 100V, 4°C, 1h
 Blocking: 5% w/v nonfat dry milk, 1 \times TBST, at RT with gentle shaking
 Primary antibody: 1:1000 in blocking buffer, 4°C, overnight
 Secondary antibody (WLA023a) : 1:5000-1:10000, 45min
 Detection: ECL, 30s-2min



Western blot-Anti-RXRA pAb

Lane 1: Mouse kidney tissue lysate 30 μ g
 Lane 2: Mouse heart tissue lysate 30 μ g
 Lane 3: Rat liver tissue lysate 30 μ g
 Lane 4: Rat brain tissue lysate 30 μ g
 Separation gel: 10% polyacrylamide
 Electrophoresis: 100V, 4°C, 3h
 Transmembrane: 100V, 4°C, 1h
 Blocking: 5% w/v nonfat dry milk, 1 \times TBST, at RT with gentle shaking
 Primary antibody: 1:1000 in blocking buffer, 4°C, overnight
 Secondary antibody (WLA023a) : 1:5000-1:10000, 45min
 Visualization: ECL, 30s-2min