

Anti-MMP13 Rabbit pAb



WL04694

For Research Use Only. Not For Use In Diagnostic Procedures

Product Information

Product name	Anti-MMP13 Rabbit pAb	
Source	Rabbit	
Species reactivity	Human	
Tested applications	WB	1:1000-1:2000
Pack size	50/100/200/500/1000µl	
Storage	Store at -20°C. Avoid freeze/thaw cycles.	
Storage buffer	Supplied in 20 mM phosphate (pH 7.5), 150 mM NaCl, 100 µg/ml BSA, 50% glycerol and less than 0.02% sodium azide	

General Information

Background MMP-13(Matrix metalloproteinase-13), a member of the peptidase M10 family of matrix metalloproteinases (MMPs). MMP-13 is found in hypertrophic and calcifying cartilage of mammalian growth plate. Proteins in this family are involved in the breakdown of extracellular matrix in normal physiological processes, such as embryonic development, reproduction, and tissue remodeling, as well as in disease processes, such as arthritis and metastasis.

Immunogen Polyclonal antibody is produced by immunizing animals with a synthetic peptide of MMP13.

Purification Polyclonal antibody was purified by Protein A affinity chromatography.

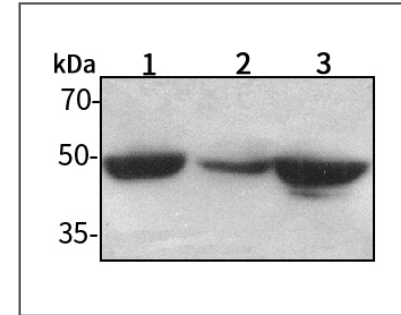
Anti-MMP13 Rabbit pAb



WL04694

For Research Use Only. Not For Use In Diagnostic Procedures

Product Images



Western blot-Anti-MMP13 pAb

Lane 1: Human A549 cell lysate
 Lane 2: Human HUVEC cell lysate
 Lane 3: Human SW480 cell lysate
 All lanes: Anti-MMP13 at 1:1000 dilution
 Lysates/proteins at 20-50 µg per lane.
 Predicted band size: 54 kDa
 Observed band size: 46 kDa