

Anti-p-p38 (Thr180/Tyr182) Rabbit pAb



WLP1576

For Research Use Only. Not For Use In Diagnostic Procedures

Product Information

Product name	Anti-p-p38 (Thr180/Tyr182) Rabbit pAb	
Source	Rabbit	
Species reactivity	Human, Mouse, Rat	
Tested applications	Western blot	1:500-1:1000

**Suggested working dilutions are given as a guide only. It is recommended that the user titrates the product for use in their own experiment using appropriate negative and positive controls.*

Molecular Wt. 38-43 kDa

Pack size 100/200/500/1000 μ l

Storage Store at -20°C. **Avoid freeze/thaw cycles.**

Storage buffer Supplied in 20 mM phosphate (pH 7.5), 150 mM NaCl, 100 μ g/ml BSA, 50% glycerol and less than 0.02% sodium azide

General Information

Background MAP (mitogen-activated protein) kinases play a significant role in many biological processes, including cell adhesion and spreading, cell differentiation and apoptosis. Four isoforms of p38 MAPK, p38 α , β , γ (also known as Erk6 or SAPK3), and δ (also known as SAPK4) have been identified. Similar to the SAPK/JNK pathway, p38 MAPK is activated by a variety of cellular stresses including osmotic shock, inflammatory cytokines, lipopolysaccharide (LPS), UV light, and growth factors. MKK3, MKK6, and SEK activate p38 MAPK by phosphorylation at Thr180 and Tyr182. Activated p38 MAPK has been shown to phosphorylate and activate MAPKAP kinase 2 and to phosphorylate the transcription factors ATF-2, Max, and MEF2.

Immunogen Polyclonal antibody is produced by immunizing animals with a synthetic peptide of p-p38 (Thr180/Tyr182).

Purification Polyclonal antibody was purified by immunogen affinity chromatography.

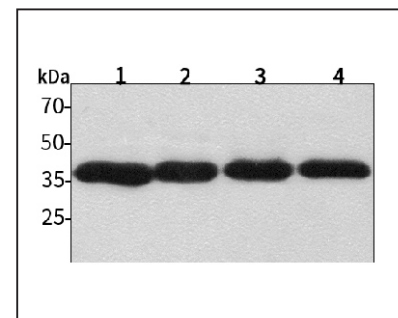
Anti-p-p38 (Thr180/Tyr182) Rabbit pAb



WLP1576

For Research Use Only. Not For Use In Diagnostic Procedures

Product Images



Western blot-Anti-p-p38 (Thr180/Tyr182) pAb

Lane 1: Human HepG2 cell lysate 30 μ gLane 2: Human Hela cell lysate 30 μ gLane 3: Human BGC-823 cell lysate 30 μ gLane 4: Human MGC-803 cell lysate 30 μ g

Separation gel: 11% polyacrylamide

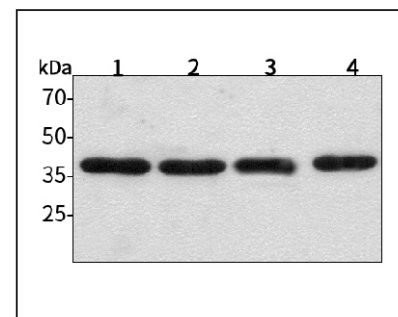
Electrophoresis: 100V, 4°C, 3h

Transmembrane: 100V, 4°C, 1h

Blocking: 5% w/v nonfat dry milk, 1 \times TBST, at RT with gentle shaking

Primary antibody: 1:1000 in blocking buffer, 4°C, overnight

Visualization: ECL, 30s-2min



Western blot-Anti-p-p38 (Thr180/Tyr182) pAb

Lane 1: Mouse brain tissue lysate 30 μ gLane 2: Mouse lung tissue lysate 30 μ gLane 3: Rat liver tissue lysate 30 μ gLane 4: Rat testicle tissue lysate 30 μ g

Separation gel: 11% polyacrylamide

Electrophoresis: 100V, 4°C, 3h

Transmembrane: 100V, 4°C, 1h

Blocking: 5% w/v nonfat dry milk, 1 \times TBST, at RT with gentle shaking

Primary antibody: 1:1000 in blocking buffer, 4°C, overnight

Visualization: ECL, 30s-2min