

Anti-TLR4 Rabbit pAb



WL00196

For Research Use Only. Not For Use In Diagnostic Procedures

Product Information

Product name	Anti-TLR4 Rabbit pAb		
Source	Rabbit		
Species reactivity	Human, Mouse, Rat		
Tested applications	Western blot	1:1000-1:2000	
	<p><i>* Suggested working dilutions are given as a guide only. It is recommended that the user titrates the product for use in their own experiment using appropriate negative and positive controls.</i></p>		
Molecular Wt.	95 kDa		
Pack size	50/100/200/500/1000 μ l		
Storage	Store at -20°C. Avoid freeze/thaw cycles.		
Storage buffer	Supplied in 20 mM phosphate (pH 7.5), 150 mM NaCl, 100 μ g/ml BSA, 50% glycerol and less than 0.02% sodium azide		

General Information

Background	The protein encoded by this gene is a member of the Toll-like receptor (TLR) family which plays a fundamental role in pathogen recognition and activation of innate immunity. The TLR family of proteins are characterized by a highly conserved Toll homology (TH) domain, which is essential for Toll-induced signal transduction. TLR2 and TLR4 are activated in response to lipopolysacchride (LPS) stimulation, which results in the activation and translocation of NF κ B and suggests that these receptors are involved in mediating inflammatory responses. Expression of TLR receptors is highest in peripheral blood leukocytes, macro-phages, and monocytes.
Immunogen	Polyclonal antibody is produced by immunizing animals with a synthetic peptide of TLR4.
Purification	Polyclonal antibody was purified by protein A affinity chromatography.

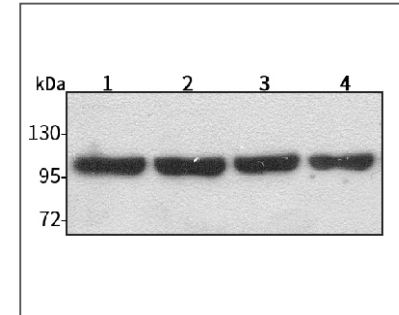
Anti-TLR4 Rabbit pAb



WL00196

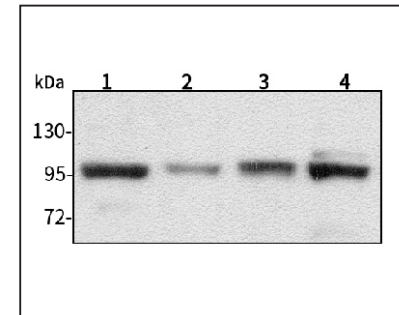
For Research Use Only. Not For Use In Diagnostic Procedures

Product Images



Western blot-Anti-TLR4 pAb

Lane 1: Human HepG2 cell lysate 24 μ g
 Lane 2: Human Hela cell lysate 24 μ g
 Lane 3: Human BGC-823 cell lysate 24 μ g
 Lane 4: Human MGC-803 cell lysate 24 μ g
 Separation gel: 8% polyacrylamide
 Electrophoresis: 100V, 4°C, 3h
 Transmembrane: 100V, 4°C, 1.5h
 Blocking: 5% w/v nonfat dry milk, 1 \times TBST, at RT with gentle shaking
 Primary antibody: 1:1000 in blocking buffer, 4°C, overnight
 Secondary antibody-HRP: 1:7000 in blocking buffer, RT, 45min
 Visualization: ECL



Western blot-Anti-TLR4 pAb

Lane 1: Mouse heart tissue lysate 24 μ g
 Lane 2: Mouse brain tissue lysate 24 μ g
 Lane 3: Rat skin tissue lysate 24 μ g
 Lane 4: Rat kidney tissue lysate 24 μ g
 Separation gel: 8% polyacrylamide
 Electrophoresis: 100V, 4°C, 3h
 Transmembrane: 100V, 4°C, 1.5h
 Blocking: 5% w/v nonfat dry milk, 1 \times TBST, at RT with gentle shaking
 Primary antibody: 1:1000 in blocking buffer, 4°C, overnight
 Secondary antibody-HRP: 1:7000 in blocking buffer, RT, 45min
 Visualization: ECL