

## Anti-spindlin 1 Rabbit pAb



WL04680

For Research Use Only. Not For Use In Diagnostic Procedures

## Product Information

|                            |                            |               |
|----------------------------|----------------------------|---------------|
| <b>Product name</b>        | Anti-spindlin 1 Rabbit pAb |               |
| <b>Source</b>              | Rabbit                     |               |
| <b>Species reactivity</b>  | Human, Mouse, Rat          |               |
| <b>Tested applications</b> | Western blot               | 1:1000-1:2000 |

*\*Suggested working dilutions are given as a guide only. It is recommended that the user titrates the product for use in their own experiment using appropriate negative and positive controls.*

|                       |   |
|-----------------------|---|
| <b>Molecular Wt.</b>  | 30 kDa  |
| <b>Pack size</b>      | 50/100/200/500/1000µl   |
| <b>Storage</b>        | Store at -20°C. <b>Avoid freeze/thaw cycles.</b>  |
| <b>Storage buffer</b> | Supplied in 20 mM phosphate (pH 7.5), 150 mM NaCl, 100 µg/ml BSA, 50% glycerol and less than 0.02% sodium azide |

## General Information

|                   |   |
|-------------------|---|
| <b>Background</b> | SPIN1, also named as OCR and SPIN, plays a role in cell-cycle regulation during the transition from gamete to embryo. SPIN1 induces necrotic cell death via autophagy. It plays a critical role in necrotic cell death in cultured human cells. |
|-------------------|---|

|                  |   |
|------------------|---|
| <b>Immunogen</b> | Polyclonal antibody is produced by immunizing animals with a synthetic peptide of spindlin 1. |
|------------------|---|

|                     |  |
|---------------------|--|
| <b>Purification</b> | Polyclonal antibody was purified by Protein A affinity chromatography. |
|---------------------|--|

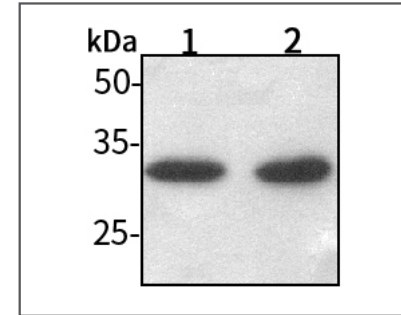
## Anti-spindlin 1 Rabbit pAb



WL04680

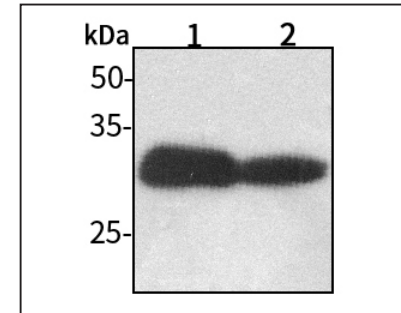
For Research Use Only. Not For Use In Diagnostic Procedures

## Product Images



## Western blot-Anti-spindlin 1 pAb

Lane 1: Human HeLa cell lysate 30µg  
 Lane 2: Human MCF-7 cell lysate 30µg  
 Separation gel: 13% polyacrylamide  
 Electrophoresis: 100V, 4°C, 3h  
 Transmembrane: 100V, 4°C, 1h  
 Blocking: 5% w/v nonfat dry milk, 1×TBST, at RT with gentle shaking  
 Primary antibody: 1:1000 in blocking buffer, 4°C, overnight  
 Secondary antibody (WLA023a) : 1:5000-1:10000, 45min  
 Detection: ECL, 30s-2min



## Western blot-Anti-spindlin 1 pAb

Lane 1: Mouse liver tissue lysate 30µg  
 Lane 2: Rat lung tissue lysate 30µg  
 Separation gel: 13% polyacrylamide  
 Electrophoresis: 100V, 4°C, 3h  
 Transmembrane: 100V, 4°C, 1h  
 Blocking: 5% w/v nonfat dry milk, 1×TBST, at RT with gentle shaking  
 Primary antibody: 1:1000 in blocking buffer, 4°C, overnight  
 Secondary antibody (WLA023a) : 1:5000-1:10000, 45min  
 Detection: ECL, 30s-2min