

Anti-Occludin Rabbit pAb



WL01996

For Research Use Only. Not For Use In Diagnostic Procedures

Product Information

Product name	Anti-Occludin Rabbit pAb	
Source	Rabbit	
Species reactivity	Human, Mouse, Rat	
Tested applications	WB	1:1000-1:2000
	IHC	1:100-1:300
	IF	1:100-1:200
Cellular localization	Secreted and Cell membrane	
Pack size	50/100/200/500/1000μl	
Storage	Store at -20°C. Avoid freeze/thaw cycles.	
Storage buffer	Supplied in 20 mM phosphate (pH 7.5), 150 mM NaCl, 100 μg/ml	
	BSA, 50% glycerol and less than 0.02% sodium azide	

General Information

Background	<p>Occludin is an integral membrane protein closely associated with the tight junctions of epithelial and endothelial cells. Occludin is a tetraspan integral membrane protein in epithelial and endothelial tight junction (TJ) structures that can contain two extracellular loops. The protein exists in a variety of phosphorylated forms. Phosphorylation is involved in regulating both the localization and the function of occludin. Expression of occludin is up-regulated by polyunsaturated fatty acids, increasing transendothelial cell resistance and reducing cellular permeability to large molecules. The level of occludin varies greatly depending on tissue; in brain tissue, occludin is highly expressed at cell-cell contact sites. Non-neural tissues show lower expression and discontinuous distribution. Up-regulation of epithelial occludin may play a role in enhancing paracellular permeability and be related to the damage to the tight junction.</p>
Immunogen	<p>Polyclonal antibody is produced by immunizing animals with recombinant protein of Occludin.</p>
Purification	<p>Polyclonal antibody was purified by Protein A affinity chromatography.</p>

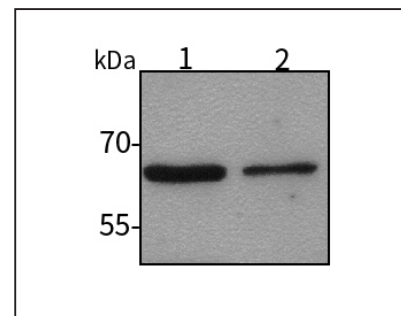
Anti-Occludin Rabbit pAb



WL01996

For Research Use Only. Not For Use In Diagnostic Procedures

Product Images



Western blot-Anti-Occludin pAb

Lane 1: Human HepG2 cell lysate

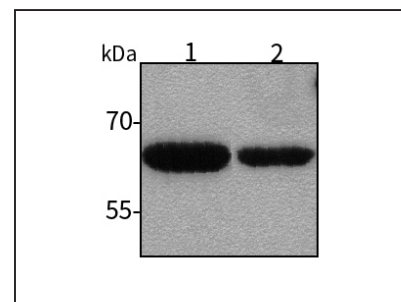
Lane 2: Human Hela cell lysate

All lanes: Anti-Occludin at 1:1000 dilution

Lysates/proteins at 20-50 μg per lane.

Predicted band size: 59 kDa

Observed band size: 65 kDa



Western blot-Anti-Occludin pAb

Lane 1: Mouse heart tissue lysate

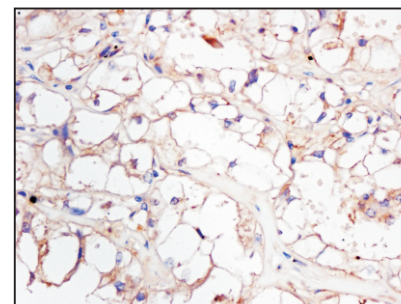
Lane 2: Rat colon tissue lysate

All lanes: Anti-Occludin at 1:1000 dilution

Lysates/proteins at 20-50 μg per lane.

Predicted band size: 59 kDa

Observed band size: 65 kDa



Immunohistochemistry-Anti-Occludin pAb

Immunohistochemical analysis of paraffin-embedded human kidney cancer using anti-Occludin Rabbit Antibody at 1:200 dilution.

Perform heat mediated antigen retrieval with Tris-EDTA buffer pH 9.0

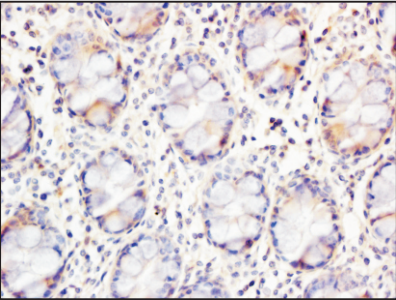
Anti-Occludin Rabbit pAb



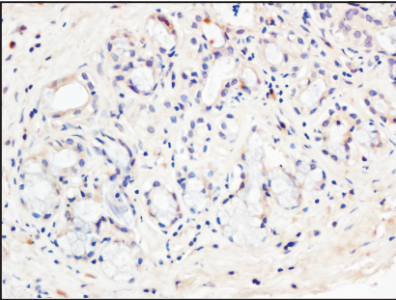
WL01996

For Research Use Only. Not For Use In Diagnostic Procedures

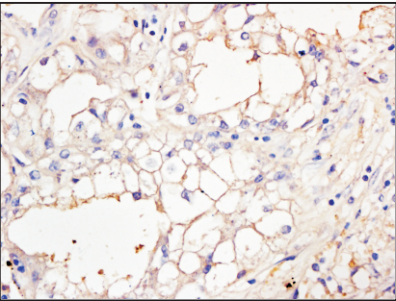
Product Information



Immunohistochemistry-Anti-Occludin pAb
Immunohistochemical analysis of paraffin-embedded human colon cancer using anti-Occludin Rabbit Antibody at 1:200 dilution.
Perform heat mediated antigen retrieval with Tris-EDTA buffer pH 9.0



Immunohistochemistry-Anti-Occludin pAb
Immunohistochemical analysis of paraffin-embedded human bile duct cancer using anti-Occludin Rabbit Antibody at 1:200 dilution.
Perform heat mediated antigen retrieval with Tris-EDTA buffer pH 9.0



Immunohistochemistry-Anti-Occludin pAb
Immunohistochemical analysis of paraffin-embedded human kidney cancer using anti-Occludin Rabbit Antibody at 1:200 dilution.
Perform heat mediated antigen retrieval with Tris-EDTA buffer pH 9.0

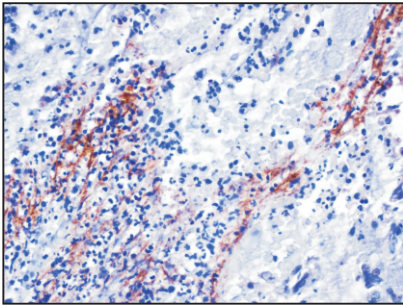
Anti-Occludin Rabbit pAb



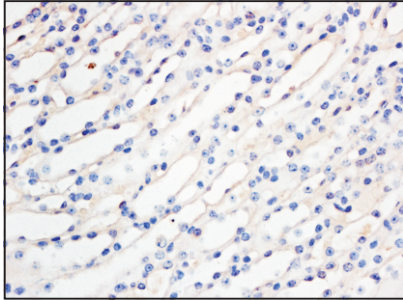
WL01996

For Research Use Only. Not For Use In Diagnostic Procedures

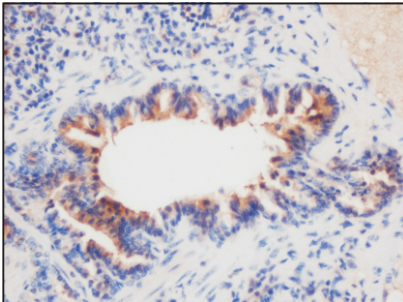
Product Information



Immunohistochemistry-Anti-Occludin pAb
Immunohistochemical analysis of paraffin-embedded human stomach cancer using anti-Occludin Rabbit Antibody at 1:200 dilution.
Perform heat mediated antigen retrieval with Tris-EDTA buffer pH 9.0



Immunohistochemistry-Anti-Occludin pAb
Immunohistochemical analysis of paraffin-embedded mouse kidney using anti-Occludin Rabbit Antibody at 1:200 dilution.
Perform heat mediated antigen retrieval with Tris-EDTA buffer pH 9.0



Immunohistochemistry-Anti-Occludin pAb
Immunohistochemical analysis of paraffin-embedded mouse lung using anti-Occludin Rabbit Antibody at 1:200 dilution.
Perform heat mediated antigen retrieval with Tris-EDTA buffer pH 9.0

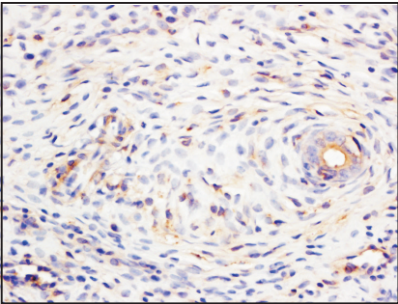
Anti-Occludin Rabbit pAb



WL01996

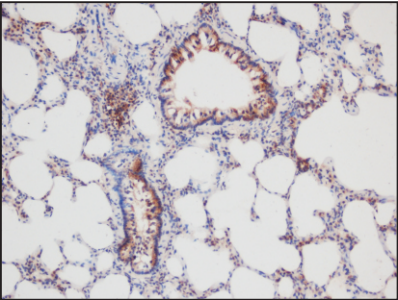
For Research Use Only. Not For Use In Diagnostic Procedures

Product Information



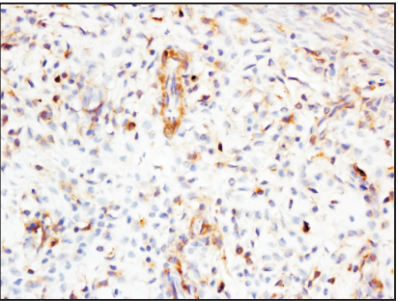
Immunohistochemistry-Anti-Occludin pAb

Immunohistochemical analysis of paraffin-embedded rat uterus using anti-Occludin Rabbit Antibody at 1:200 dilution.
Perform heat mediated antigen retrieval with Tris-EDTA buffer pH 9.0



Immunohistochemistry-Anti-Occludin pAb

Immunohistochemical analysis of paraffin-embedded rat lung using anti-Occludin Rabbit Antibody at 1:200 dilution.
Perform heat mediated antigen retrieval with Tris-EDTA buffer pH 9.0



Immunohistochemistry-Anti-Occludin pAb

Immunohistochemical analysis of paraffin-embedded rat uterus using anti-Occludin Rabbit Antibody at 1:200 dilution.
Perform heat mediated antigen retrieval with Tris-EDTA buffer pH 9.0

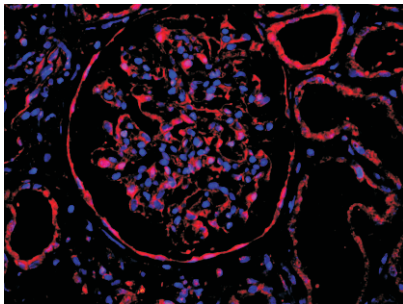
Anti-Occludin Rabbit pAb



WL01996

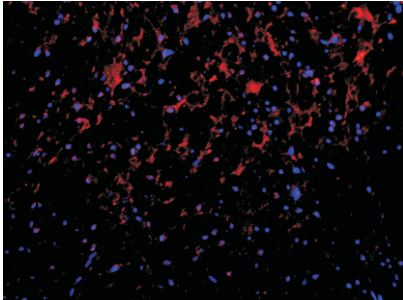
For Research Use Only. Not For Use In Diagnostic Procedures

Product Information



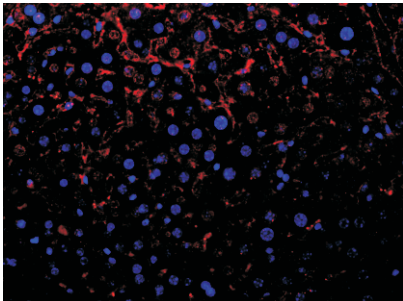
Immunofluorescence-Anti-Occludin pAb

Immunofluorescence analysis of paraffin-embedded human kidney using anti-Occludin Rabbit Antibody at 1:200 dilution.
Perform heat mediated antigen retrieval with Tris-EDTA buffer pH 9.0



Immunofluorescence-Anti-Occludin pAb

Immunofluorescence analysis of paraffin-embedded human colon cancer using anti-Occludin Rabbit Antibody at 1:200 dilution.
Perform heat mediated antigen retrieval with Tris-EDTA buffer pH 9.0



Immunofluorescence-Anti-Occludin pAb

Immunofluorescence analysis of paraffin-embedded mouse liver using anti-Occludin Rabbit Antibody at 1:200 dilution.
Perform heat mediated antigen retrieval with Tris-EDTA buffer pH 9.0

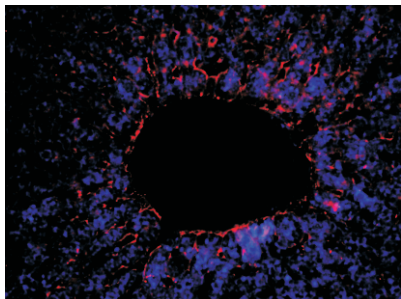
Anti-Occludin Rabbit pAb



WL01996

For Research Use Only. Not For Use In Diagnostic Procedures

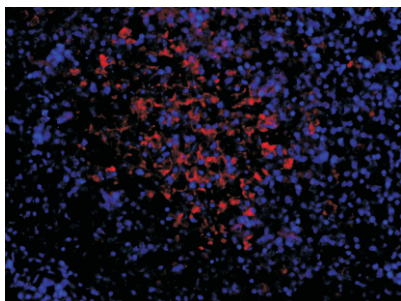
Product Information



Immunofluorescence-Anti-Occludin pAb

Immunofluorescence analysis of paraffin-embedded rat liver using anti-Occludin Rabbit Antibody at 1:200 dilution.

Perform heat mediated antigen retrieval with Tris-EDTA buffer pH 9.0



Immunofluorescence-Anti-Occludin pAb

Immunofluorescence analysis of paraffin-embedded rat spleen cancer anti-Occludin Rabbit Antibody at 1:200 dilution.

Perform heat mediated antigen retrieval with Tris-EDTA buffer pH 9.0