

Product Datasheet

Anti-B3GAT1/CD57 Rabbit pAb



WL04649

For Research Use Only. Not For Use In Diagnostic Procedures

Product Information

Product name	Anti-B3GAT1/CD57 Rabbit pAb		
Source	Rabbit		
Species reactivity	Human, Mouse, Rat		
Tested applications	Western blot	1:1000-1:2000	<i>*Suggested working dilutions are given as a guide only. It is recommended that the user titrates the product for use in their own experiment using appropriate negative and positive controls.</i>
Molecular Wt.	38 kDa		
Pack size	50/100/200/500/1000μl		
Storage	Store at -20°C. Avoid freeze/thaw cycles.		
Storage buffer	Supplied in 20 mM phosphate (pH 7.5), 150 mM NaCl, 100 μg/ml BSA, 50% glycerol and less than 0.02% sodium azide		

General Information

Background	B3GAT1 is a member of the glucuronyltransferase gene family. These enzymes exhibit strict acceptor specificity, recognizing nonreducing terminal sugars and their anomeric linkages. It plays a key role in neurodevelopment.
Immunogen	Polyclonal antibody is produced by immunizing animals with a synthetic peptide of B3GAT1/CD57.
Purification	Polyclonal antibody was purified by Protein A affinity chromatography.

Product Datasheet

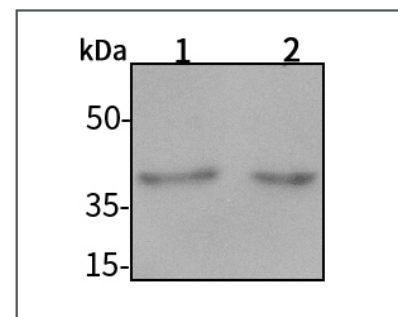
Anti-B3GAT1/CD57 Rabbit pAb



WL04649

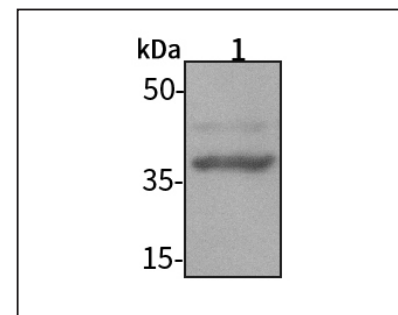
For Research Use Only. Not For Use In Diagnostic Procedures

Product Images



Western blot-Anti-B3GAT1/CD57 pAb

Lane 1: Human Hela cell lysate 30μg
Lane 2: Human MCF-7 cell lysate 30μg
Separation gel: 11% polyacrylamide
Electrophoresis: 100V, 4°C, 3h
Transmembrane: 100V, 4°C, 1h
Blocking: 5% w/v nonfat dry milk, 1×TBST, at RT with gentle shaking
Primary antibody: 1:1000 in blocking buffer, 4°C, overnight
Secondary antibody (WLA023a) : 1:5000-1:10000, 45min
Detection: ECL, 30s-2min



Western blot-Anti-B3GAT1/CD57 pAb

Lane 1: Mouse kidney tissue lysate 30μg
Lane 2: Mouse heart tissue lysate 30μg
Separation gel: 11% polyacrylamide
Electrophoresis: 100V, 4°C, 3h
Transmembrane: 100V, 4°C, 1h
Blocking: 5% w/v nonfat dry milk, 1×TBST, at RT with gentle shaking
Primary antibody: 1:1000 in blocking buffer, 4°C, overnight
Secondary antibody (WLA023a) : 1:5000-1:10000, 45min
Detection: ECL, 30s-2min