

Anti-RPS6 Rabbit pAb



WL04525

For Research Use Only. Not For Use In Diagnostic Procedures

Product Information

Product name	Anti-RPS6 Rabbit pAb	
Source	Rabbit	
Species reactivity	Human, Mouse, Rat	
Tested applications	Western blot	1:500-1:1000
	<i>*Suggested working dilutions are given as a guide only. It is recommended that the user titrates the product for use in their own experiment using appropriate negative and positive controls.</i>	
Molecular Wt.	Predicted band size: 28 kDa	
Pack size	Observed band size: 35 kDa	
Storage	50/100/200/500/1000µl	
Storage buffer	Store at -20°C. Avoid freeze/thaw cycles.	
	Supplied in 20 mM phosphate (pH 7.5), 150 mM NaCl, 100 µg/ml	
	BSA, 50% glycerol and less than 0.02% sodium azide	

General Information

Background Ribosomes, the organelles that catalyze protein synthesis, consist of a small 40S subunit and a large 60S subunit. Ribosomal protein S6 is the major substrate of protein kinases in eukaryote ribosomes. The phosphorylation is stimulated by growth factors, tumor promoting agents, and mitogens. Dephosphorylation occurs at growth arrest. The protein may contribute to the control of cell growth and proliferation through the selective translation of particular classes of mRNA.

Immunogen Polyclonal antibody is produced by immunizing animals with a synthetic peptide of RPS6.

Purification Polyclonal antibody was purified by immunogen affinity chromatography.

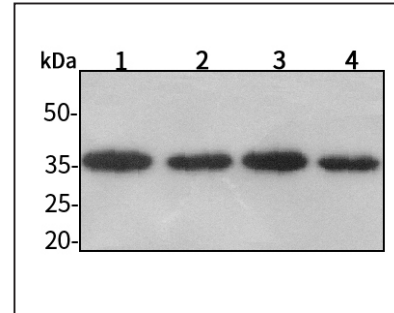
Anti-RPS6 Rabbit pAb



WL04525

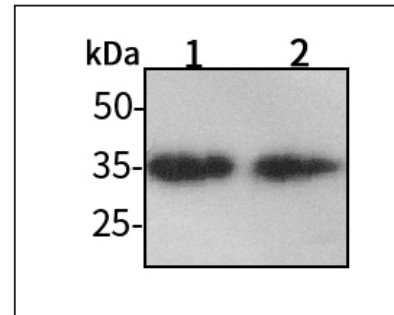
For Research Use Only. Not For Use In Diagnostic Procedures

Product Images



Western blot-Anti-RPS6 pAb

Lane 1: Human HeLa cell lysate 30µg
 Lane 2: Human MCF-7 cell lysate 30µg
 Lane 3: Human HEK-293 cell lysate 30µg
 Lane 4: Human A549 cell lysate 30µg
 Separation gel: 11% polyacrylamide
 Electrophoresis: 100V, 4°C, 3h
 Transmembrane: 100V, 4°C, 1h
 Blocking: 5% w/v nonfat dry milk, 1×TBST, at RT with gentle shaking
 Primary antibody: 1:1000 in blocking buffer, 4°C, overnight
 Secondary antibody (WLA023a) : 1:5000-1:10000, 45min
 Detection: ECL, 30s-2min



Western blot-Anti-RPS6 pAb

Lane 1: Mouse liver tissue lysate 30µg
 Lane 2: Rat lung tissue lysate 30µg
 Separation gel: 11% polyacrylamide
 Electrophoresis: 100V, 4°C, 3h
 Transmembrane: 100V, 4°C, 1h
 Blocking: 5% w/v nonfat dry milk, 1×TBST, at RT with gentle shaking
 Primary antibody: 1:1000 in blocking buffer, 4°C, overnight
 Secondary antibody (WLA023a) : 1:5000-1:10000, 45min
 Detection: ECL, 30s-2min