

## Anti-Ral A Rabbit pAb



WL04631

For Research Use Only. Not For Use In Diagnostic Procedures

## Product Information

<b>Product name</b>	Anti-Ral A Rabbit pAb
<b>Source</b>	Rabbit
<b>Species reactivity</b>	Human, Mouse, Rat
<b>Tested applications</b>	Western Blot 1:500-1:1000 <i>*Suggested working dilutions are given as a guide only. It is recommended that the user titrates the product for use in their own experiment using appropriate negative and positive controls.</i>
<b>Molecular Wt.</b>	Predicted band size: 28 kDa Observed band size: 30 kDa
<b>Pack size</b>	50/100/200/500/1000µl
<b>Storage</b>	Store at -20°C. <b>Avoid freeze/thaw cycles.</b>
<b>Storage buffer</b>	Supplied in 20 mM phosphate (pH 7.5), 150 mM NaCl, 100 µg/ml BSA, 50% glycerol and less than 0.02% sodium azide

## General Information

**Background** RalA belongs to the small GTPase superfamily. Multifunctional GTPase involved in a variety of cellular processes including gene expression, cell migration, cell proliferation, oncogenic transformation and membrane trafficking. RALA plays a role in the early stages of cytokinesis and is required to tether the exocyst to the cytokinetic furrow.

**Immunogen** Polyclonal antibody is produced by immunizing animals with a recombinant protein of Ral A.

**Purification** Polyclonal antibody was purified by immunogen affinity chromatography.

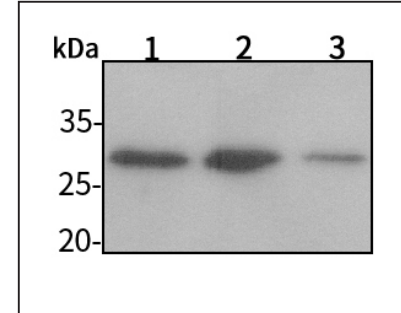
## Anti-Ral A Rabbit pAb



WL04631

For Research Use Only. Not For Use In Diagnostic Procedures

## Product Images



## Western blot-Anti-Ral A pAb

Lane 1: Human HeLa cell lysate 30µg  
Lane 2: Human MCF-7 cell lysate 30µg  
Lane 3: Human HEK-293 cell lysate 30µg

Separation gel: 13% polyacrylamide

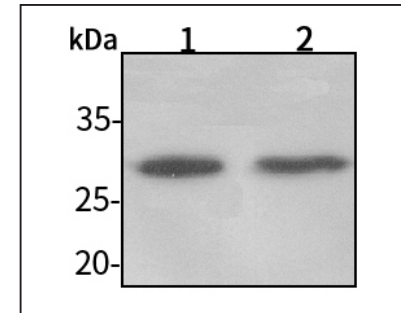
Electrophoresis: 100V, 4°C, 3h

Transmembrane: 100V, 4°C, 1h

Blocking: 5% w/v nonfat dry milk, 1×TBST, at RT with gentle shaking

Primary antibody: 1:1000 in blocking buffer, 4°C, overnight

Visualization: ECL, 30s-2min



## Western blot-Anti-Ral A pAb

Lane 1: Mouse heart tissue lysate 30µg

Lane 2: Rat stomach tissue lysate 30µg

Separation gel: 13% polyacrylamide

Electrophoresis: 100V, 4°C, 3h

Transmembrane: 100V, 4°C, 1h

Blocking: 5% w/v nonfat dry milk, 1×TBST, at RT with gentle shaking

Primary antibody: 1:1000 in blocking buffer, 4°C, overnight

Visualization: ECL, 30s-2min